

3458.TIF

TR. 5104-4

SWING
TIES

GLENDALE AVE
TR. BDY, ECR,
PARKER WAY, EC

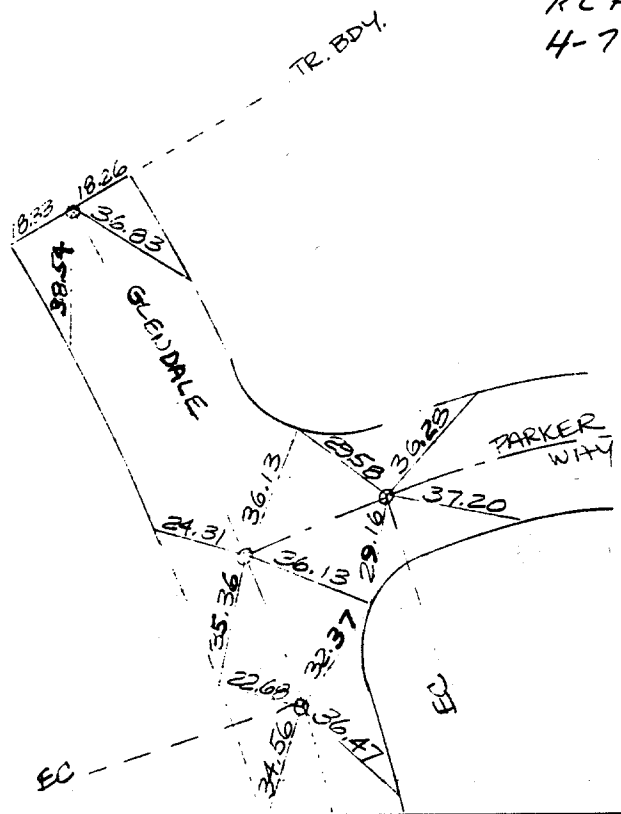
MAXWELL, BROWN & MULLINS

COPY

0 = SET 1" I.P. TAGGED
LS 3712

TIES ARE TO LEADS & TAGS
IN THE CURBS.

RC HART
4-7-77



GLENDALE AVE
Parker way

- ✕ FD. Ramset Nail on T/C
- FD. "C" Nail on T/C

- FD. LD. & TK. on T/C
- Set LD. & TK. on T/C

Street: GLENDALE AVE X-Street: PARKER WAY
OFFICIAL USE ONLY

Scale: _____
 Date: _____
 Drawn by: _____
 W.O.: _____
 F.B.: _____

OFFICIAL TIE PLAT CITY OF RIVERSIDE

*These ties are for the purpose of perpetuating the found
monumentation. No claim is made as to the relationship of
the points or lines shown hereon to true boundary locations.*

Sheet 1 of 1
File No.: _____