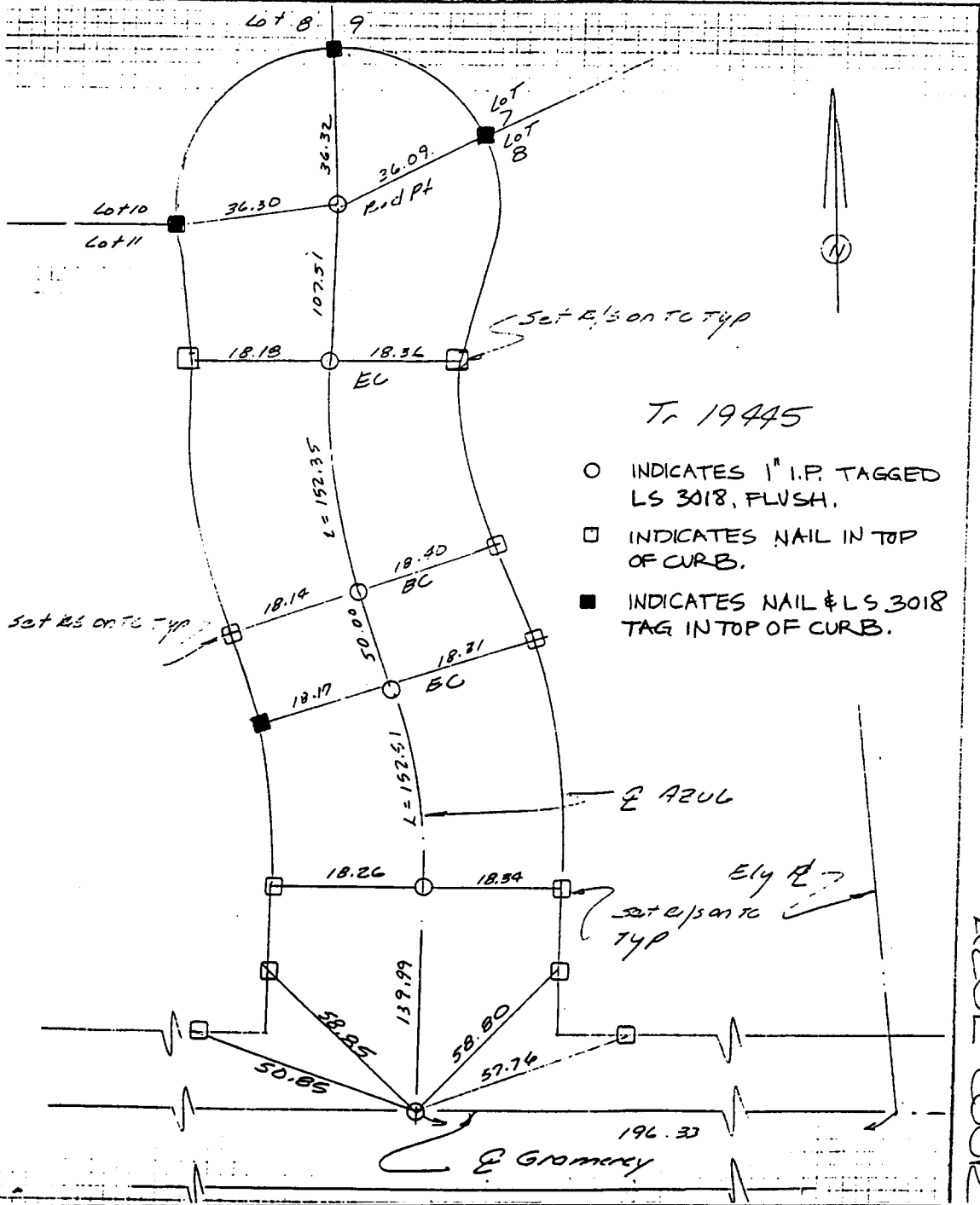


SURVEY OF E AZUL COURT for Tr 19445 SHEET 1 OF 1 SHEET
 FOR _____ W.O.No. 7921 DATE 3-30-87
 SURVEY PARTY Perch, Barrett REF. _____ A.M. _____

371.712

SURVEY NOTES



- Tr 19445
- INDICATES 1" I.P. TAGGED LS 3018, FLUSH.
 - INDICATES NAIL IN TOP OF CURB.
 - INDICATES NAIL & LS 3018 TAG IN TOP OF CURB.

- × FD. Ramset Nail on T/C
- FD. LD. & TK. on T/C
- FD. "C" Nail on T/C
- Set LD. & TK. on T/C

Street: AZUL CT.
 X-Street: GRAMERCY
 OFFICIAL USE ONLY

Scale:
 Date:
 Drawn by:
 W.O.:
 F.B.:

OFFICIAL TIE PLAT

CITY OF RIVERSIDE

These ties are for the purpose of perpetuating the found monumentation. No claim is made as to the relationship of the points or lines shown hereon to true boundary locations.

Sheet 1 of 1
 File No.: