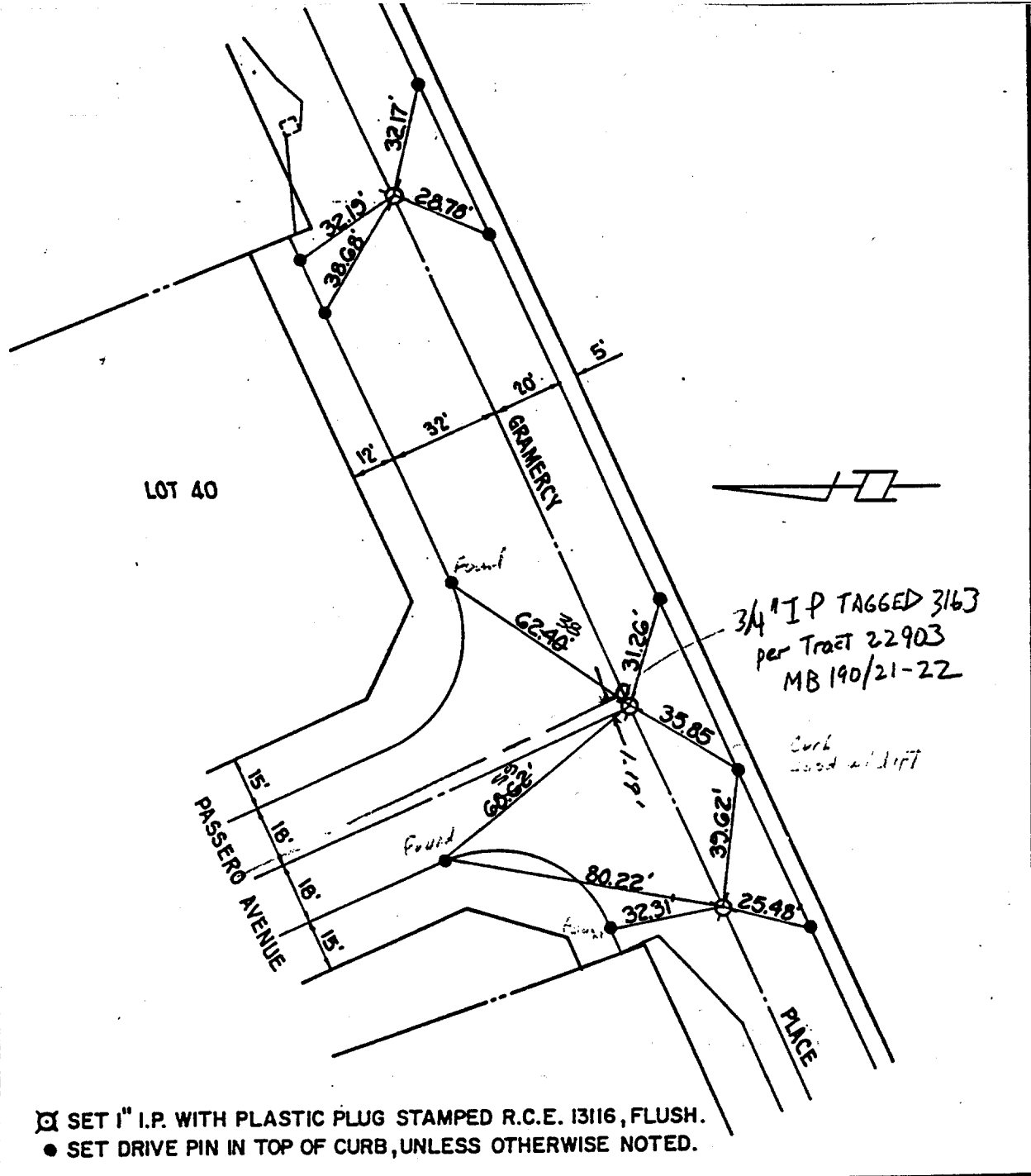


Street: GRAMERCY PL

X-Street: OFFICIAL USE ONLY

PASSERO AVE



⊗ SET 1" I.P. WITH PLASTIC PLUG STAMPED R.C.E. 13116, FLUSH.
 ● SET DRIVE PIN IN TOP OF CURB, UNLESS OTHERWISE NOTED.

G.V.W. ASSOCIATES, INC.
 WALNUT, CALIFORNIA

MONUMENT TIES
 FOR TRACT 19718-1.

SHEET NO. 10 OF 10
 DATE 5-21-85
 SCALE 1" = 40'

⊗ FD. Ramset Nail on T/C
 ■ FD. "C" Nail on T/C

● FD. LD. & TK. on T/C
 ○ Set LD. & TK. on T/C

Scale: 1" = 40'
 Date:
 Drawn by:
 W.O.:
 F.B.:

OFFICIAL TIE PLAT
 CITY OF RIVERSIDE

These ties are for the purpose of perpetuating the found monumentation. No claim is made as to the relationship of the points or lines shown hereon to true boundary locations.

TRACT 19718-1

Sheet 10 of 10
 File No.: