

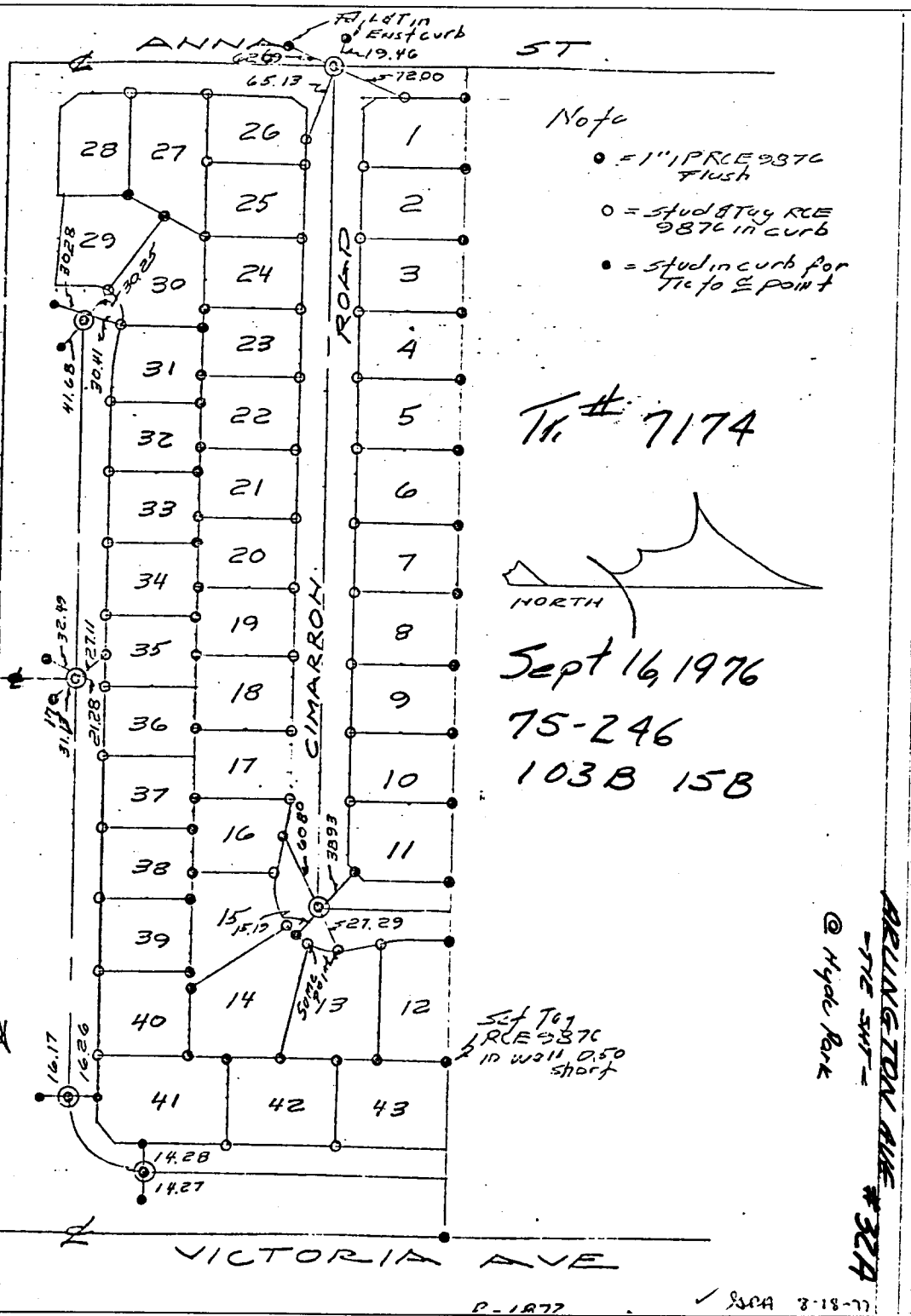
405.71F

Street: ARLINGTON AVE

OFFICIAL USE ONLY

X-Street: @ Hyde Park

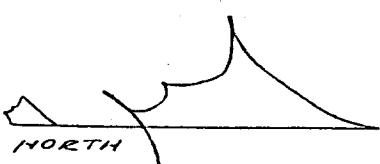
32A



Note

- = 1" P.R.C.E. 9376 flush
- = stud 8 Tug R.C.E. 9376 in curb
- = stud in curb for tie to E point

T.# 7174



Sept 16, 1976
75-246
103B 15B

ARLINGTON AVE #32A
-TIE SWT-
@ Hyde Park

✕ FD. Ramset Nail on T/C
 ■ FD. "C" Nail on T/C

● FD. LD. & TK. on T/C
 ○ Set LD. & TK. on T/C

Scale:
 Date:
 Drawn by:
 W.O.:
 F.B.:

OFFICIAL TIE PLAT

CITY OF RIVERSIDE

These ties are for the purpose of perpetuating the found monumentation. No claim is made as to the relationship of the points or lines shown hereon to true boundary locations.

Sheet 1 of 1
 File No.: