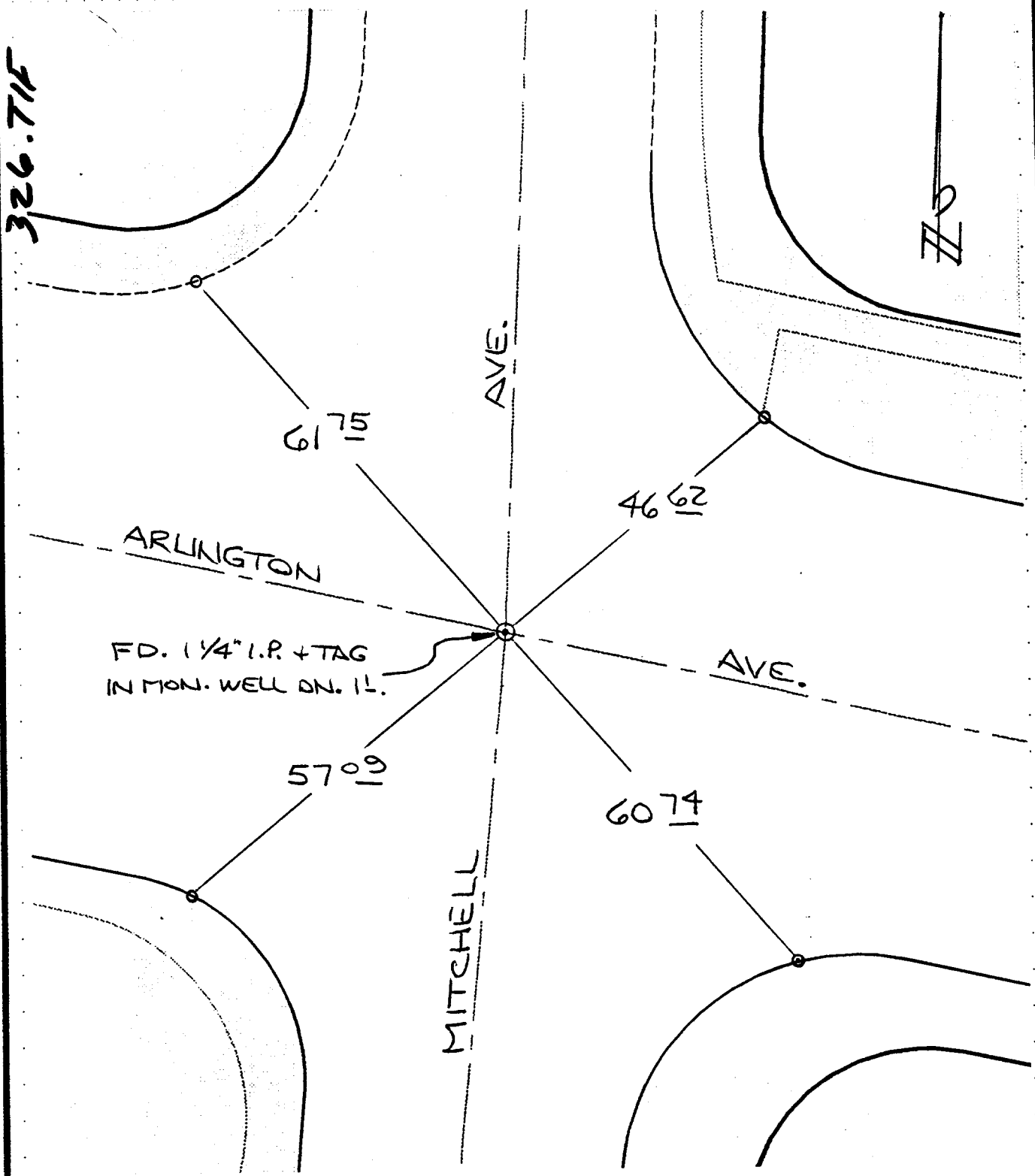


49

STREET ARLINGTON AVE. X-STREET MITCHELL AVE. OFFICE USE ONLY

TRANSIT TIES



FD. 1/4" I.P. + TAG IN MON. WELL DN. 1'.

- ✕ FD. Ramset Nail on T/C
- FD. LD. & TK. on T/C
- FD. "C" Nail on T/C
- SET LD. & TK. On T/C

SCALE: 1" = 20'
 DATE: 4-29-97
 DR. BY: LOPEZ
 W.O.:
 F.B.:

OFFICIAL TIE PLAT
 CITY OF RIVERSIDE

These ties are for the purpose of perpetuating the found monumentation. No claim is made as to the relationship of the points or lines shown hereon to true boundary locations.

SHEET
 1
 OF 1 SHEETS
 FILE NO.: