

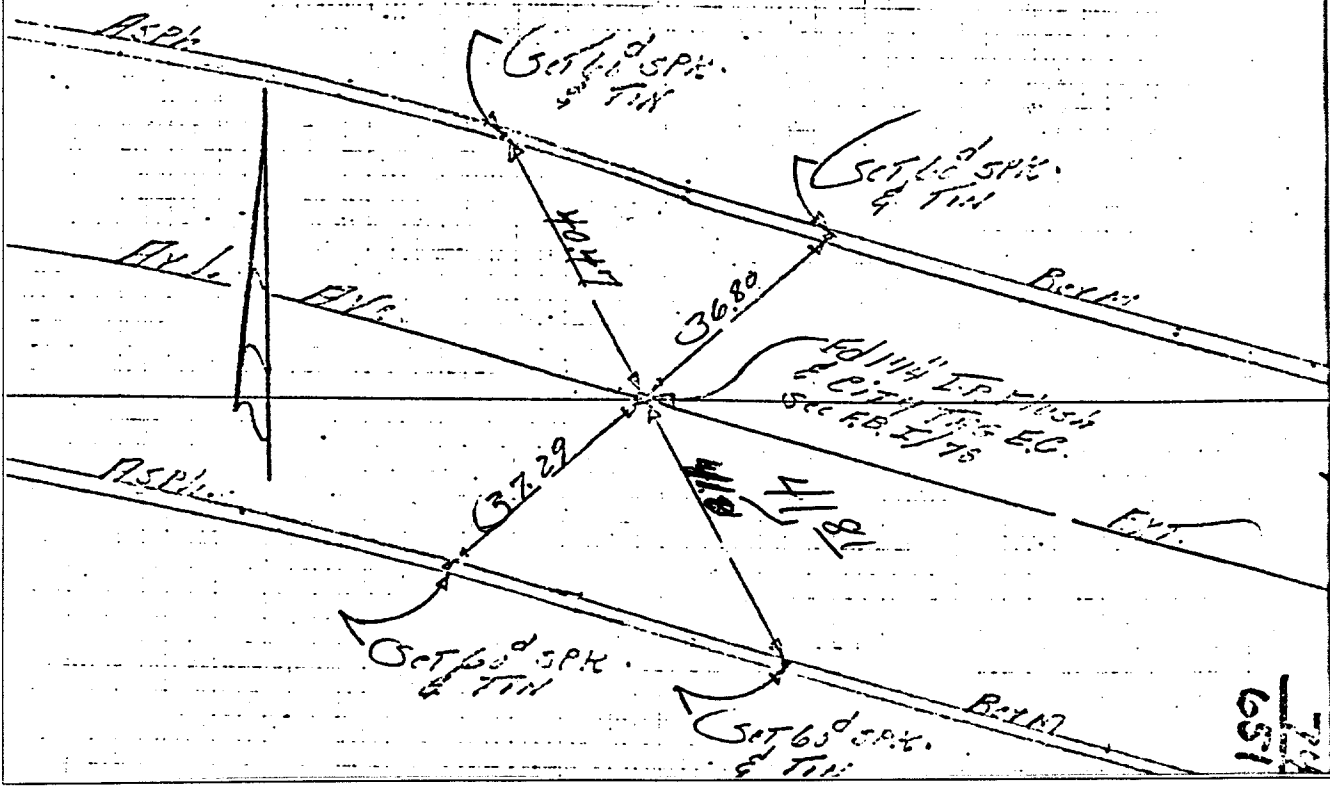
435.71E

EC. APPROX. 1120' ELY. PIEDMONT DR.

Historical Data
Sec. F.B. I/78

Field Party
Kowry
Thorp
F.B. 651/74
3-20-68

TRANSIT TIES



- ✗ FD. Ramset Nail on T/C
- FD. LD. & TK. on T/C
- FD. "C" Nail on T/C
- Set LD. & TK. on T/C

Street: Arlington Ave
X-Street: Ely of Piedmont #57
OFFICIAL USE ONLY

Scale:
Date:
Drawn by:
W.O.:
F.B.:

OFFICIAL TIE PLAT

CITY OF RIVERSIDE

These ties are for the purpose of perpetuating the found monumentation. No claim is made as to the relationship of the points or lines shown hereon to true boundary locations.

Sheet 1 of 1
File No.: