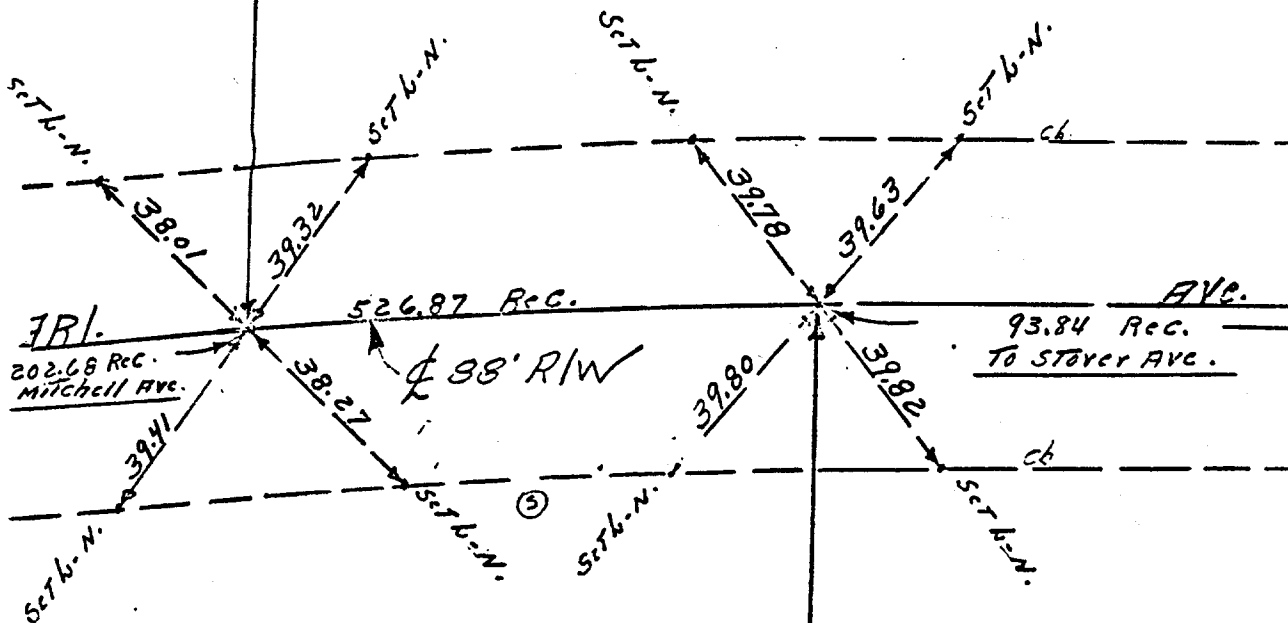


441.71E

ARLINGTON AVE.
BET. STOVER & MITCHELL

FD. 114" I.P. WITH RIV.
CO. TAG CAPPED E.C.
49+82.90

4-1-64
See F.B. H-2/15
honey



"Note" TRANSIT TIES

FD. 114" I.P. WITH RIV.
CO. TAG CAPPED B.C.
55+09.77

For Survey data R/S 33/86

- ✕ FD. Ramset Nail on T/C
- FD. "C" Nail on T/C

- FD. LD. & TK. on T/C
- Set LD. & TK. on T/C

Street: Arlington Ave

OFFICIAL USE ONLY

X-Street: BET. Stover & Mitchell # 64

Scale:
Date:
Drawn by:
W.O.:
F.B.:

OFFICIAL TIE PLAT
CITY OF RIVERSIDE

These ties are for the purpose of perpetuating the found monumentation. No claim is made as to the relationship of the points or lines shown hereon to true boundary locations.

Sheet 1 of 1
File No.: