

STREET JURUPA AVE. X-STREET CHESTER ST.  
OFFICE USE ONLY

SCALE: N.T.S.  
DATE: OCT. 31, 96  
DR. BY: FINNEY, J  
W.O.:  
F.B.:

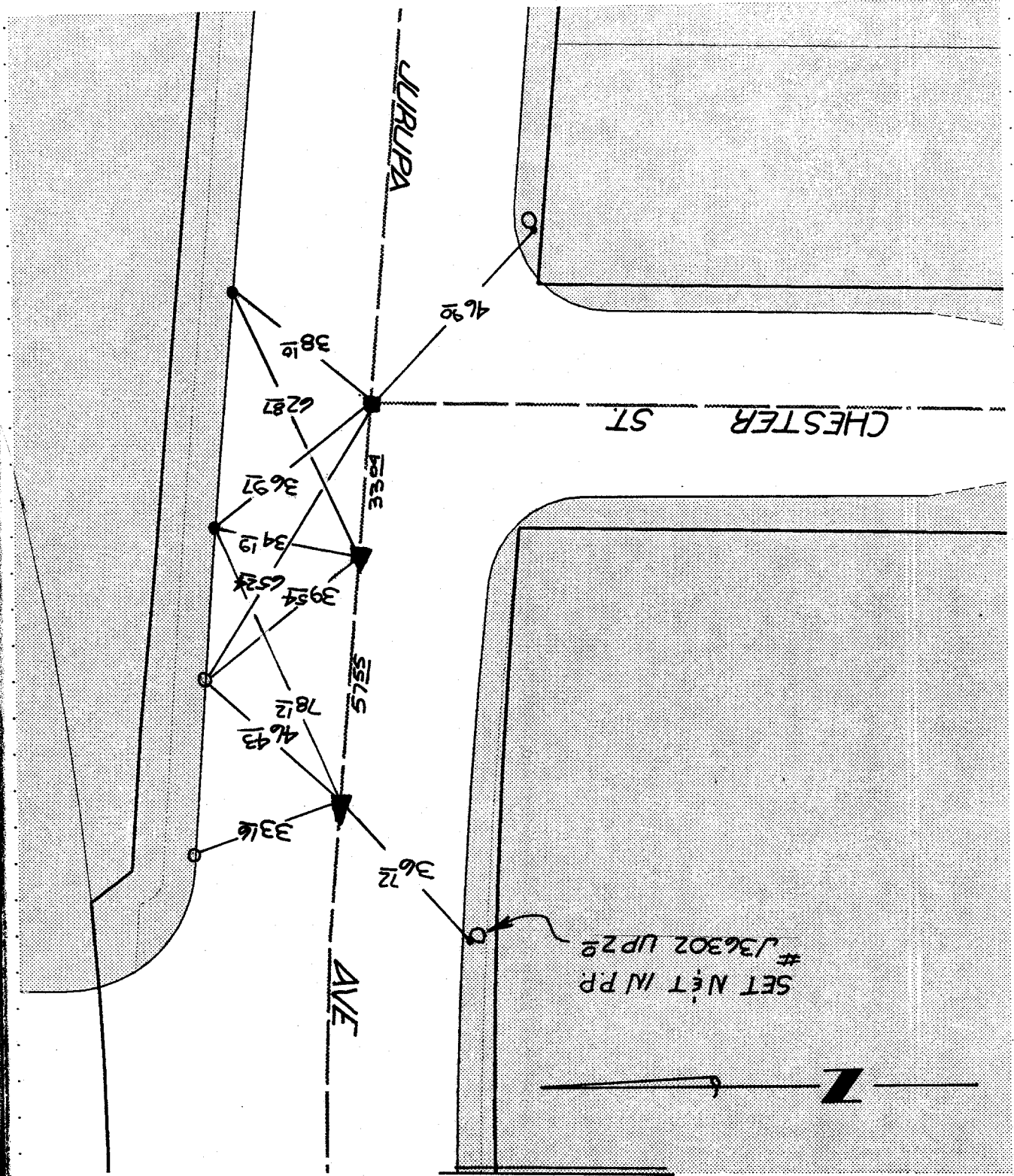
OFFICIAL TIE PLAT  
CITY OF RIVERSIDE  
These ties are for the purpose of perpetuating the found  
monumentation. No claim is made as to the relationship of  
the points or lines shown hereon to true boundary locations.

FILE NO.:  
OF 1 SHEETS  
SHEET 1

FILE # 11.8747

- X FD. Ramset Nail on T/C
- FD. "C" Nail on T/C
- FD. 2" BRASS DISC

- FD. LD. & TK. on T/C
- SET LD. & TK. on T/C
- ▲ SET PK. & CITY ENGR. TAG 1-7-97



SET NÉT IN PP  
# J36302 UP 29

SWING TIES