

522S.TIF

TRACT 22275



ENGINEERING ARCHITECTURE PLANNING SURVEYING LANDSCAPE ARCHITECTURE

07-11504/61

SURVEY OF E. Ties

SHEET 1 OF 4 SHEETS

FOR TR 22275-4 (E) LOING

W.O. No. 89-11304

Date 2-12-90

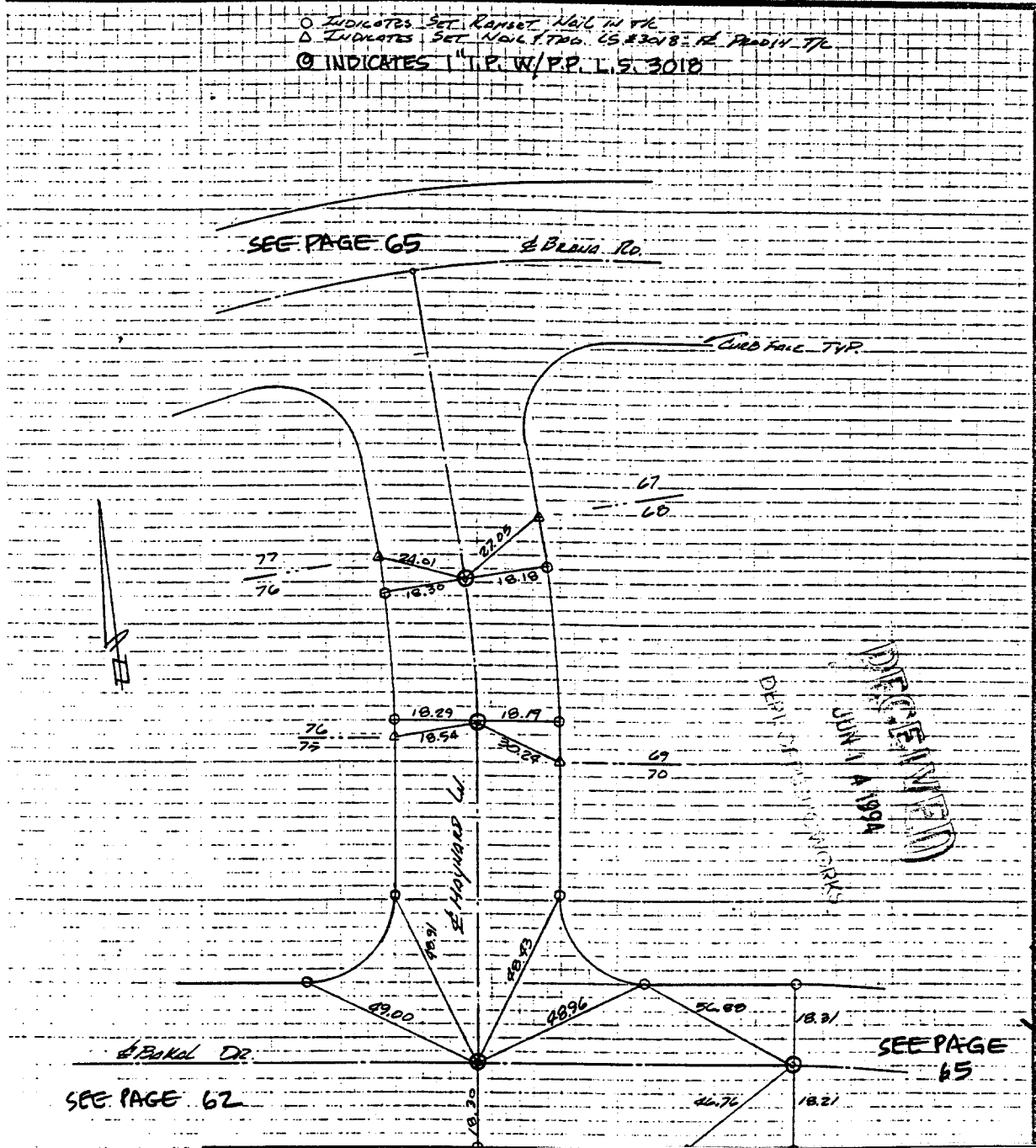
SURVEY PARTY 23880 H. Clark

REF.

AM.

O INDICATES SET RAMSET NAIL IN T/C
D INDICATES SET NAIL IN T/C CS #3218-12 PROD. TR
@ INDICATES 1" T.P. W/P.P. L.S. 3018

SURVEY NOTES



- ✕ FD. Ramset Nail on T/C
- FD. LD. & TK. on T/C
- FD. "C" Nail on T/C
- Set LD. & TK. on T/C

Scale:
Date: 2-12-90
Drawn by:
W.O.: 89-11304
F.B.:

OFFICIAL TIE PLAT

CITY OF RIVERSIDE

These ties are for the purpose of perpetuating the found monumentation. No claim is made as to the relationship of the points or lines shown hereon to true boundary locations.

TRACT 22275
Sheet 1 of 4
File No.:

Street: MAYNARD LN.
X-Street: BAKAL DR. & BRAVA RD.
OFFICIAL USE ONLY