

5418.TIF

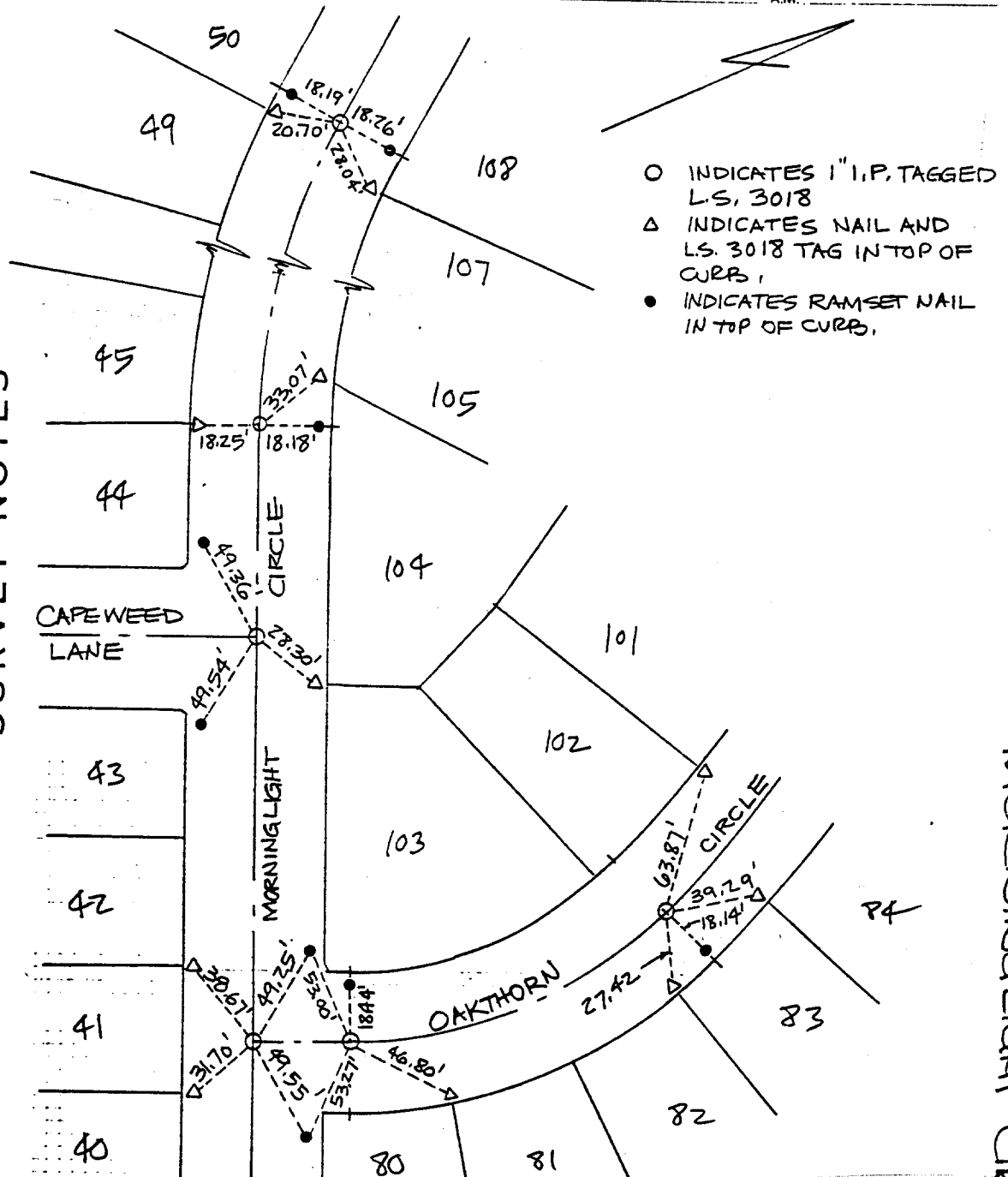


J.F. Davidson Associates, Inc.  
 ENGINEERS, PLANNING, SURVEYORS  
 1000 WEST 9TH STREET, RIVERSIDE, CALIF. 92507-1000

F.B. 10854/100

SURVEY OF TRACT 21834-5  
 FOR TIE SHEETS W.O. No. 8810854 Date 7/30/92  
 SURVEY PARTY \_\_\_\_\_ REF. \_\_\_\_\_ A.M. \_\_\_\_\_

SURVEY NOTES



- INDICATES 1" I.P. TAGGED L.S. 3018
- △ INDICATES NAIL AND L.S. 3018 TAG IN TOP OF CURB,
- INDICATES RAMSET NAIL IN TOP OF CURB.

- ✕ FD. Ramset Nail on T/C
- FD. LD. & TK. on T/C
- FD. "C" Nail on T/C
- Set LD. & TK. on T/C

Street: MORNING LIGHT CIRCLE X-Street: CAPE WEED LN. & OAKTHORN CIRCLE  
 OFFICIAL USE ONLY

Scale:  
 Date:  
 Drawn by:  
 W.O.:  
 F.B.:

## OFFICIAL TIE PLAT

### CITY OF RIVERSIDE

*These ties are for the purpose of perpetuating the found monumentation. No claim is made as to the relationship of the points or lines shown hereon to true boundary locations.*

Sheet 1 of 1  
 File No.: