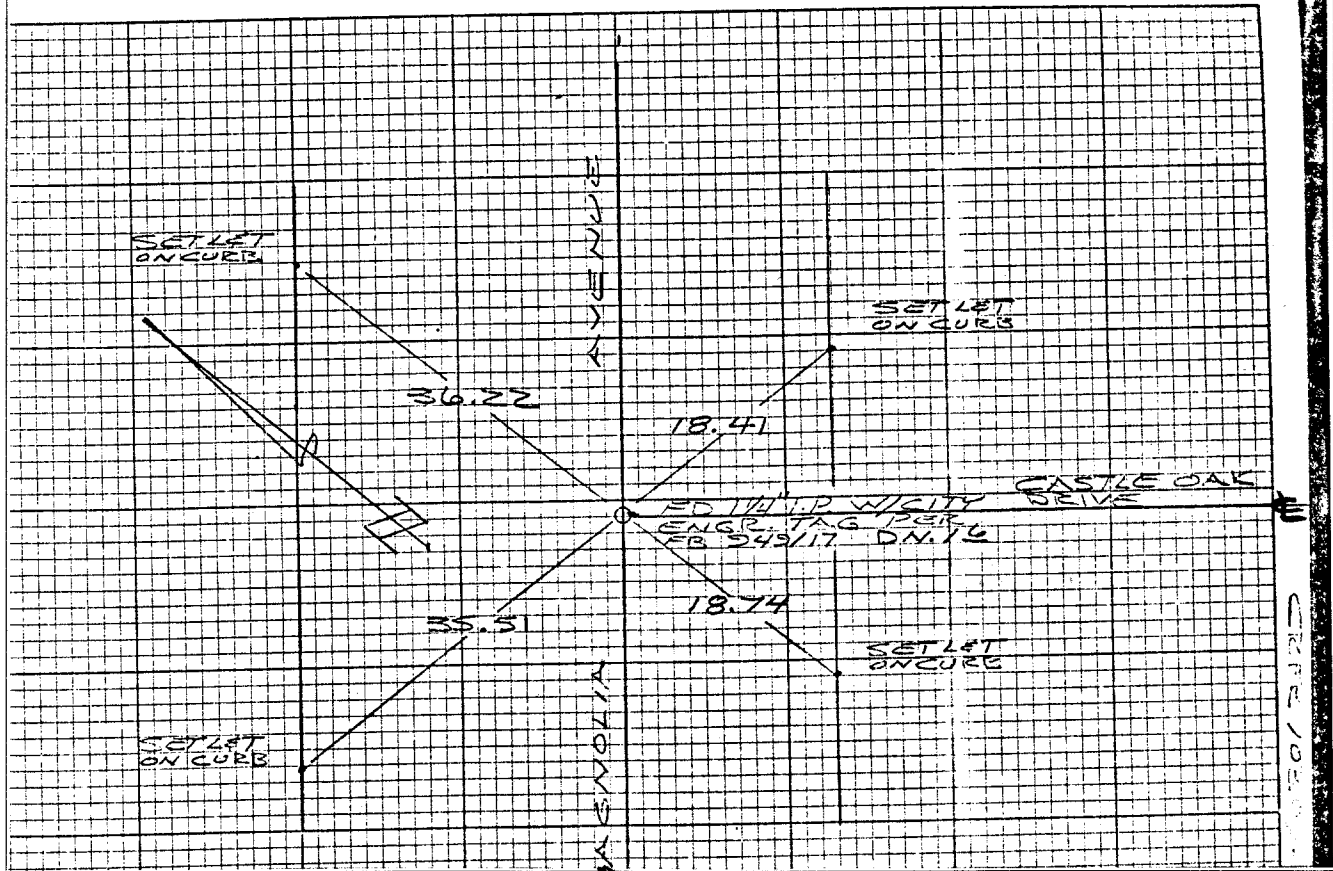


Street: Castle Oak Dr.

OFFICIAL USE ONLY

X-Street: Magnolia Ave

HISTORICAL DATA FB 545717 TOWN & COUNTY EST.		TRANSIT TIES	CREW GARCIA / MONTAGUE CONNER MAR 13, 1951 FB 1030740
--	--	--------------	--



- FD. Ramset Nail on T/C
- FD. "C" Nail on T/C
- FD. LD. & TK. on T/C
- Set LD. & TK. on T/C

Scale:  
 Date:  
 Drawn by:  
 W.O.:  
 F.B.:

## OFFICIAL TIE PLAT

### CITY OF RIVERSIDE

*These ties are for the purpose of perpetuating the found monumentation. No claim is made as to the relationship of the points or lines shown hereon to true boundary locations.*

Sheet 1 of 1  
 File No.:

14