

Street: MADISON ST.

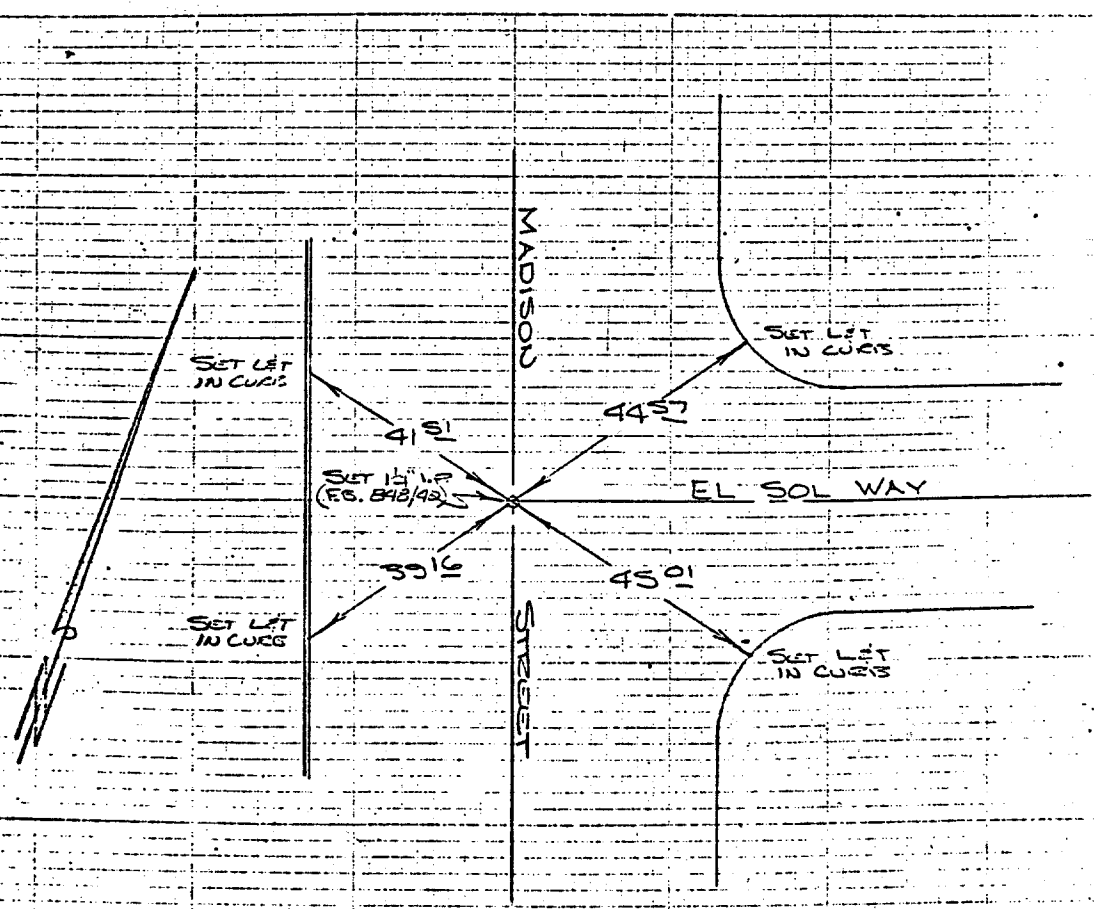
X-Street: EL SOL WAY  
OFFICIAL USE ONLY

MADISON STREET  
AT EL SOL WAY

HISTORICAL DATA  
F.B. 848/40  
F.B. 729/6,7  
F.B. 736/48  
LOS RANCHITOS SUB  
#2 MB 36/27

TRANSIT  
TIES.

CREW  
STELLE  
MORGAN  
2-14-68  
F.B. 848/41



- ✕ FD. Ramset Nail on T/C
- FD. "C" Nail on T/C

- FD. LD. & TK. on T/C
- Set LD. & TK. on T/C

Scale:  
Date:  
Drawn by:  
W.O.:  
F.B.: 848 / 41

## OFFICIAL TIE PLAT

### CITY OF RIVERSIDE

*These ties are for the purpose of perpetuating the found monumentation. No claim is made as to the relationship of the points or lines shown hereon to true boundary locations.*

Sheet 1 of 1  
File No.: