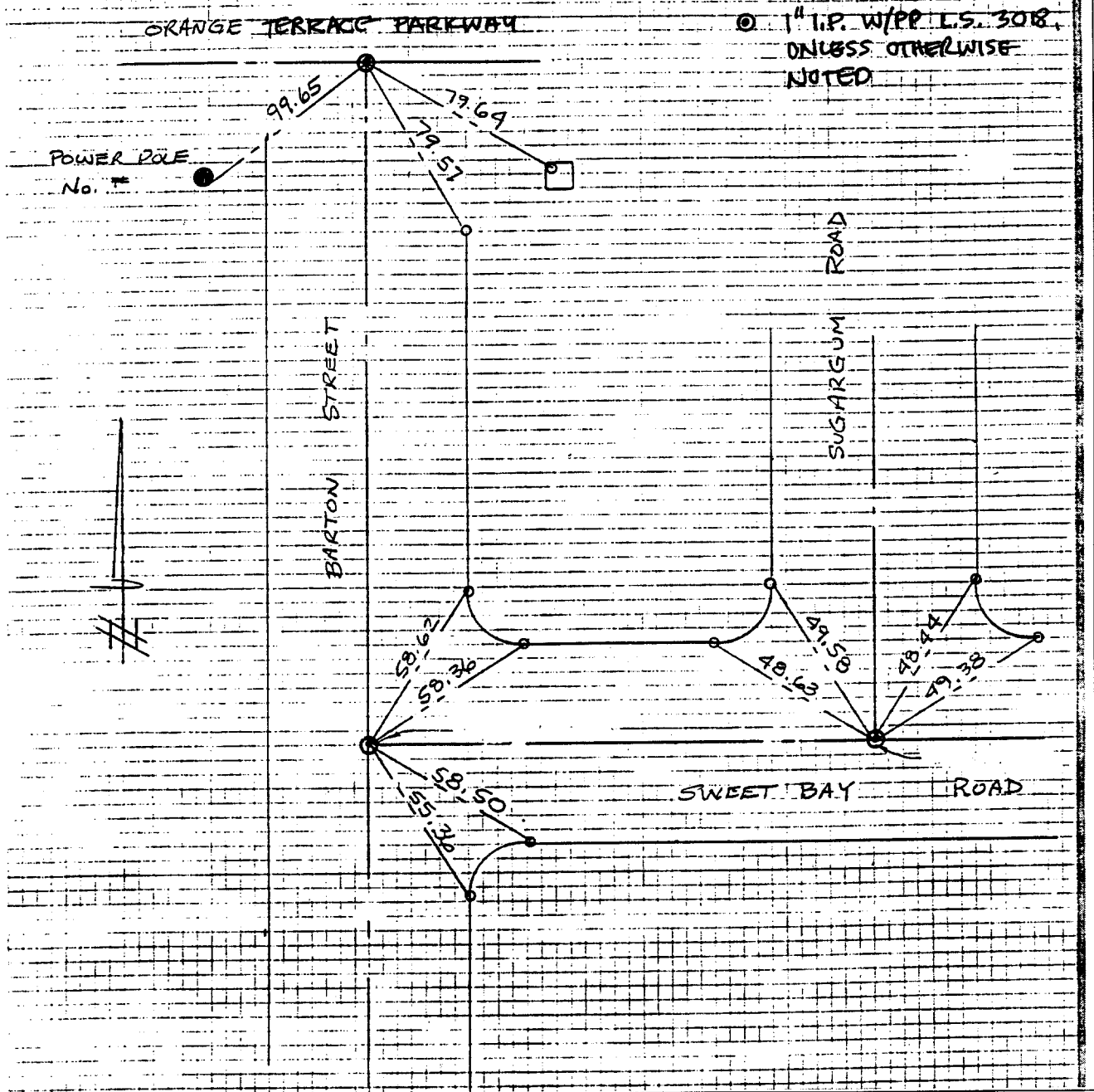


571.125

SURVEY OF TRACT No 21834-1 & TIES SHEET 5 OF 5 SHEETS  
FOR PACESETTER W.O. No. 11035 Date 11-14-89  
SURVEY PARTY MCKEE, HOPKINS, SMITH REF. A.M.

- SET RAMSET IN T/C
- 1" I.P. W/PP L.S. 308, UNLESS OTHERWISE NOTED



- × FD. Ramset Nail on T/C
- FD. LD. & TK. on T/C
- FD. "C" Nail on T/C
- Set LD. & TK. on T/C

Street: BARTON ST.  
X-Street: ORANGE TERRACE PRVY  
OFFICIAL USE ONLY

Scale:  
Date:  
Drawn by:  
W.O.:  
F.B.:

## OFFICIAL TIE PLAT

### CITY OF RIVERSIDE

*These ties are for the purpose of perpetuating the found monumentation. No claim is made as to the relationship of the points or lines shown hereon to true boundary locations.*

Sheet **5** of **5**  
File No.: