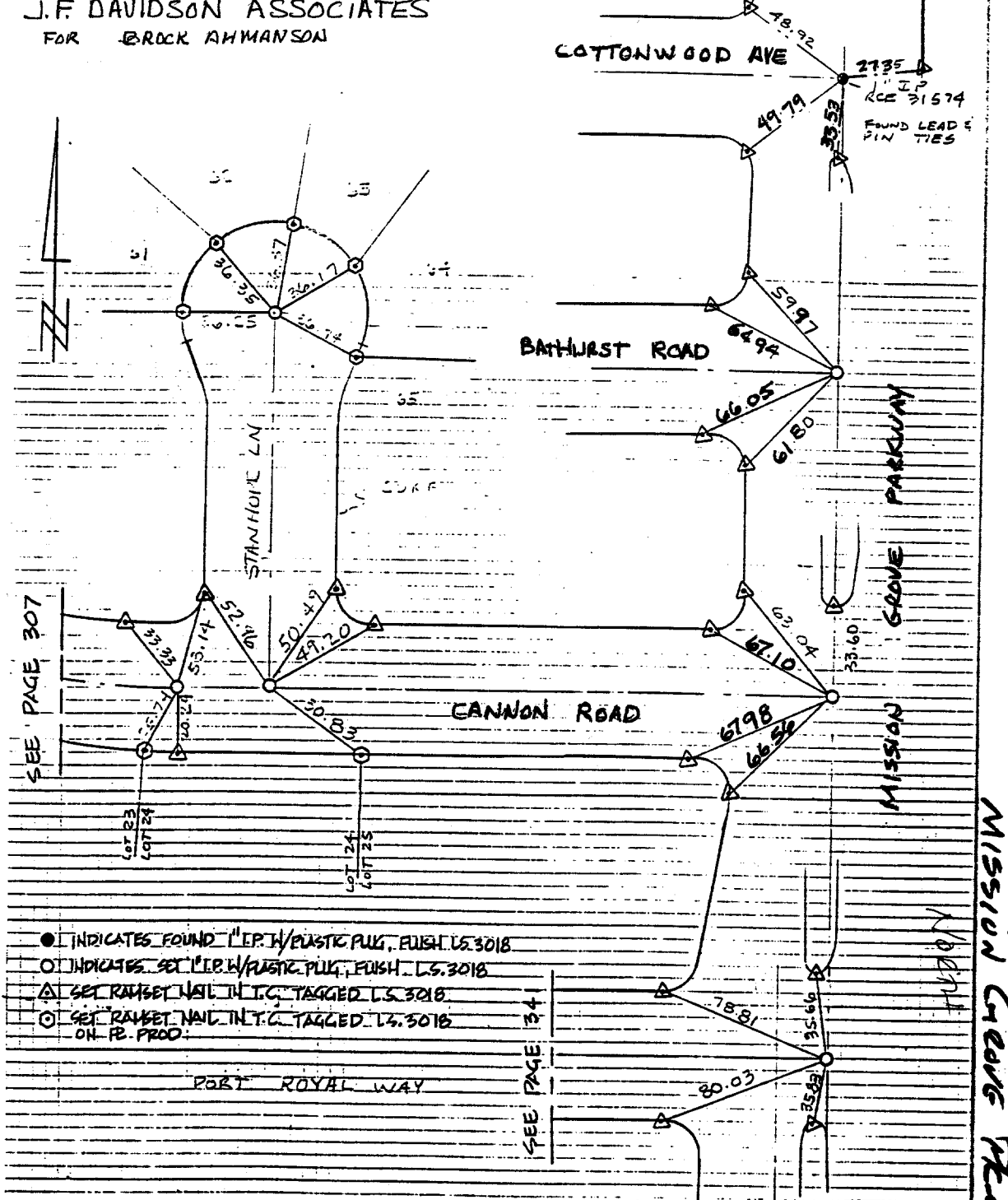


5721.TIF

SURVEY PARTY McKEE MOYER CLOVER REF. _____

A.M.

J.F. DAVIDSON ASSOCIATES
FOR BROCK AHMANSON



SEE PAGE 307

SEE PAGE 341

- INDICATES FOUND "I.P.W./PASTE PLUG, FINISH L.S. 3018
- INDICATES SET "I.P.W./PASTE PLUG, FINISH L.S. 3018
- △ SET RAMSET NAIL IN T/C, TAGGED L.S. 3018
- SET RAMSET NAIL IN T/C, TAGGED L.S. 3018 ON P.B. PROD.

- × FD. Ramset Nail on T/C
- FD. LD. & TK. on T/C
- FD. "C" Nail on T/C
- Set LD. & TK. on T/C

Street: MISSION GROVE PARKWAY X-Street: COTTONWOOD AVE — Port Royal Way
 OFFICIAL USE ONLY

Scale:
 Date:
 Drawn by:
 W.O.:
 F.B.: 9767/308

OFFICIAL TIE PLAT

CITY OF RIVERSIDE

These ties are for the purpose of perpetuating the found monumentation. No claim is made as to the relationship of the points or lines shown hereon to true boundary locations.

Sheet 1 of 1
 File No.: