

Street:

MONROE ST.

5780.71F

X-Street:

CAMELIA DR.

OFFICIAL USE ONLY

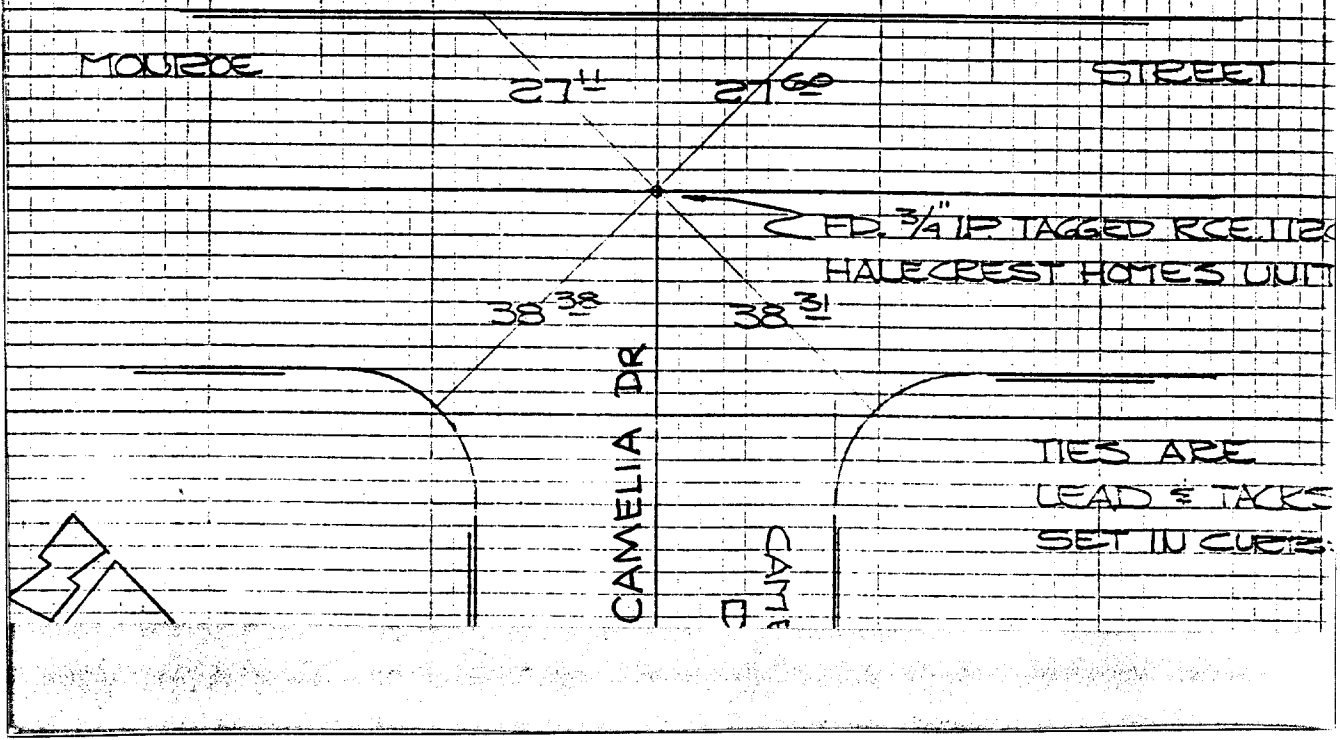
CRFB 942/19

CAMELIA
AT MONROE

HISTORICAL
DATA
MAP OF
HALECREST
HOMES UNIT 1

TRANSIT TIES

CREW:
EWING
FRYC
NEW
MAY 28, 1910
CRFB 522/19



- ✕ FD. Ramset Nail on T/C
- FD. "C" Nail on T/C

- FD. LD. & TK. on T/C
- Set LD. & TK. on T/C

Scale:

Date:

Drawn by:

W.O.:

F.B.:

OFFICIAL TIE PLAT

CITY OF RIVERSIDE

These ties are for the purpose of perpetuating the found monumentation. No claim is made as to the relationship of the points or lines shown hereon to true boundary locations.

Sheet 1 of 1

File No.: