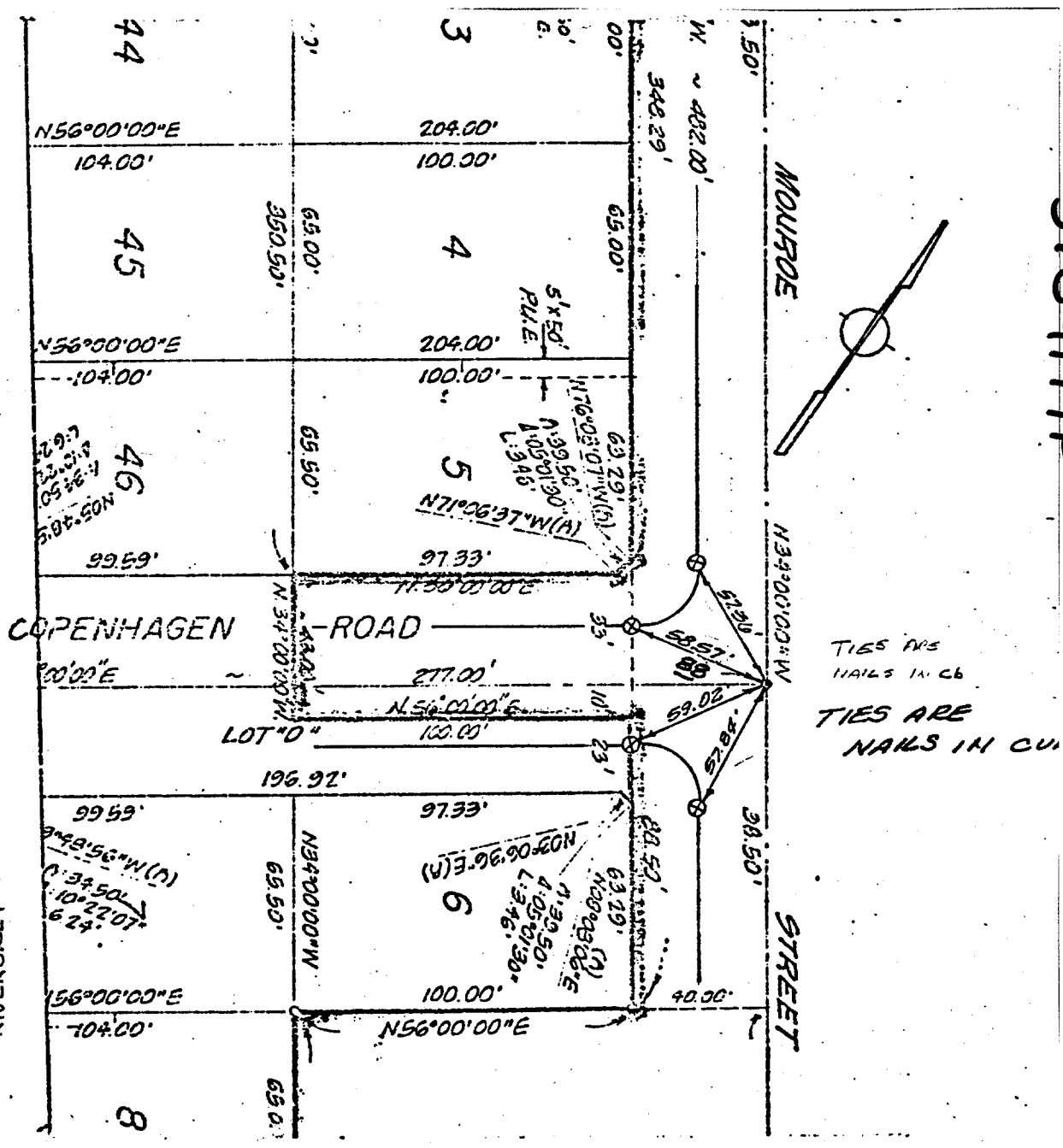


Street: MONROE ST. **5789.71P**
 X-Street: COPENHAGEN RD.

OFFICIAL USE ONLY



TIES ARE NAILS IN CB
 TIES ARE NAILS IN CU

J F DAVIDSON ASSOCIATES
 3426 TENTH ST
 RIVERSIDE, CALIF

- Indicates Riverside County Standard No. 903 Type "B" Monument (1/2" Brass Cap Stamped R.C.E. 862).
- ⊙ Indicates Riverside County Standard No. 902 Type "A" Monument (1/4" Iron Pipe Tagged R.C.E. 862).
- ⊙ Indicates Set Nail & Tagged R.C.E. 862 In Curb.
- Indicates Set Nail In Curb.

- ⊗ FD. Ramset Nail on T/C
- FD. LD. & TK. on T/C
- FD. "C" Nail on T/C
- Set LD. & TK. on T/C

Scale: 1" = 50'
 Date: SEPT 1977
 Drawn by:
 W.O.:
 F.B.:

OFFICIAL TIE PLAT
 CITY OF RIVERSIDE

These ties are for the purpose of perpetuating the found monumentation. No claim is made as to the relationship of the points or lines shown hereon to true boundary locations.

TRACT 7675-1
 Sheet 1 of 6
 File No.: