

Street: MONROE ST.

X-Street: OFFICIAL USE ONLY

DOS CASAS PL.

CRFB 608/17

Sec: R.S. 20-96

Sewer
ins

Dist

-96

Sanitary Sewer

Locations

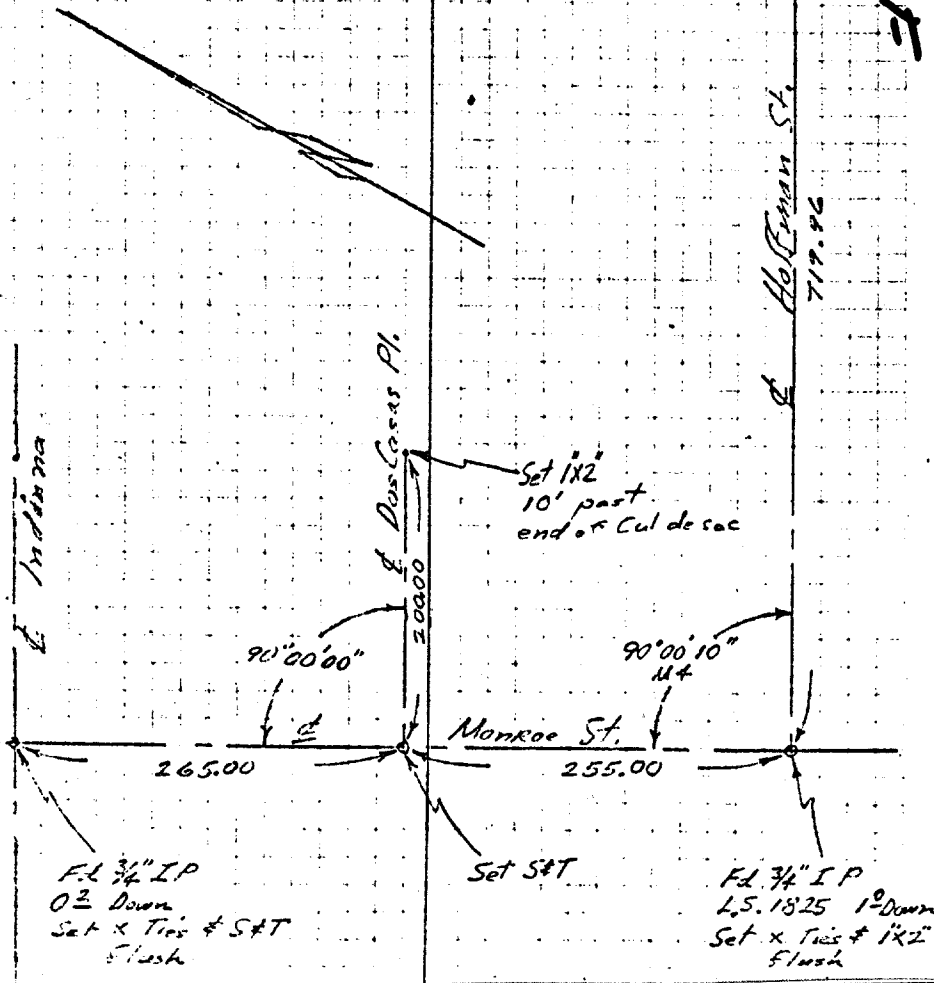
V Hoffman - Monroe
& Profile # house

4-17-57
Voelker
Bradley
Mitchell

← Bernard St.

FD 3/4" IP Bent
12" Down Replaced
with 1 1/4" I.P. Flush
Set x Ties

~~5790.716~~
5790.716



✕ FD. Ramset Nail on T/C
 ■ FD. "C" Nail on T/C

● FD. LD. & TK. on T/C
 ○ Set LD. & TK. on T/C

Scale:
 Date:
 Drawn by:
 W.O.:
 F.B.:

OFFICIAL TIE PLAT
CITY OF RIVERSIDE

These ties are for the purpose of perpetuating the found monumentation. No claim is made as to the relationship of the points or lines shown hereon to true boundary locations.

Sheet 1 of 1
 File No.: