

Street: MULBERRY ST. X-Street: 13TH ST.

OFFICIAL USE ONLY

5836.71F

C.A.F.B. 695 / 7  
6

MULBERRY ST.  
@ 13th St.

11th St

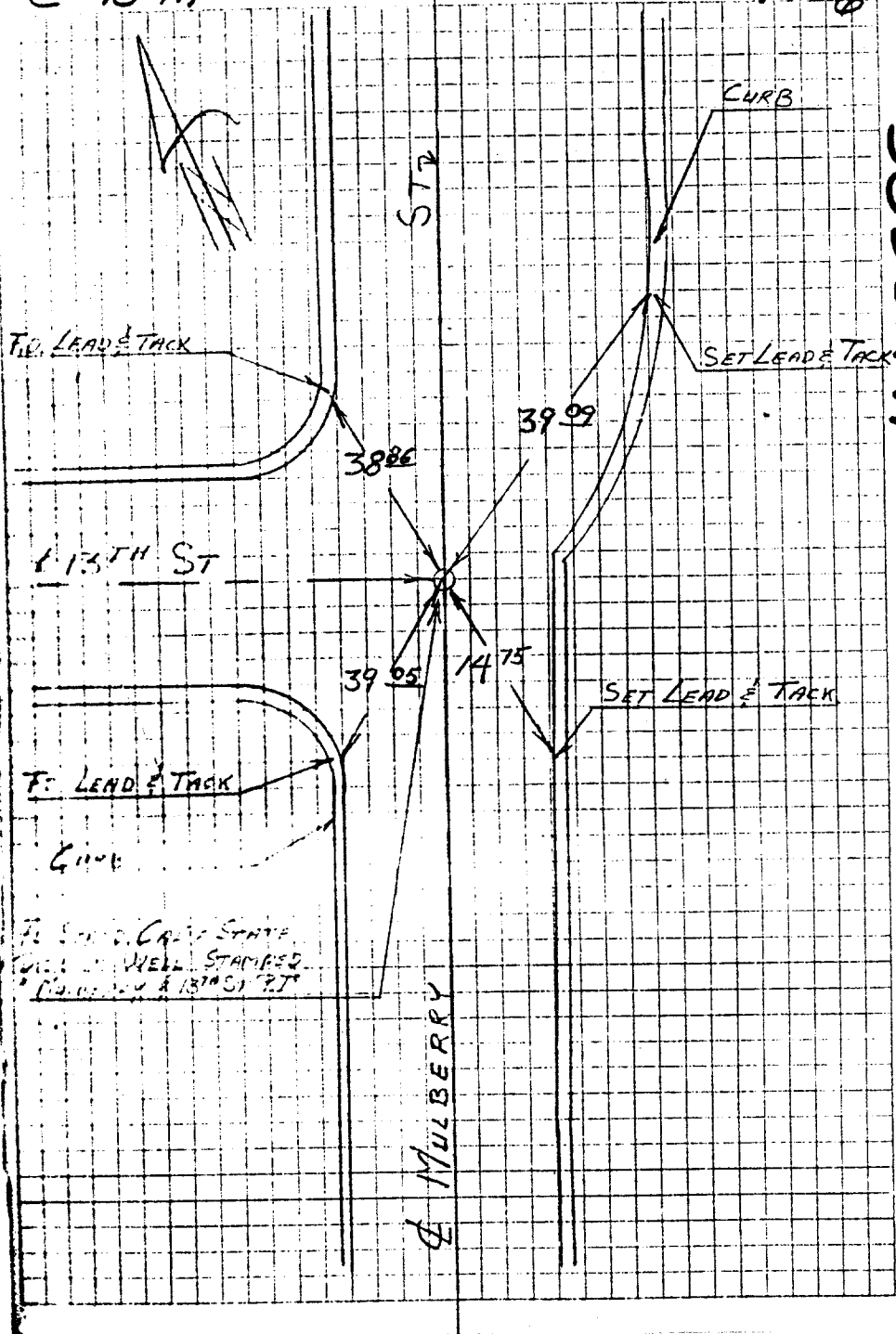
Φ TIES

MULBERRY & 13TH ST

6-1-61  
KUOPPMAKI  
STEELE

TRANSIT  
TIES

HISTORICAL DATA  
CRFB 272/6



- × FD. Ramset Nail on T/C
- FD. "C" Nail on T/C

- FD. LD. & TK. on T/C
- Set LD. & TK. on T/C

Scale:

Date:

Drawn by:

W.O.:

F.B.:

## OFFICIAL TIE PLAT

### CITY OF RIVERSIDE

*These ties are for the purpose of perpetuating the found monumentation. No claim is made as to the relationship of the points or lines shown hereon to true boundary locations.*

Sheet 1 of 1

File No.: