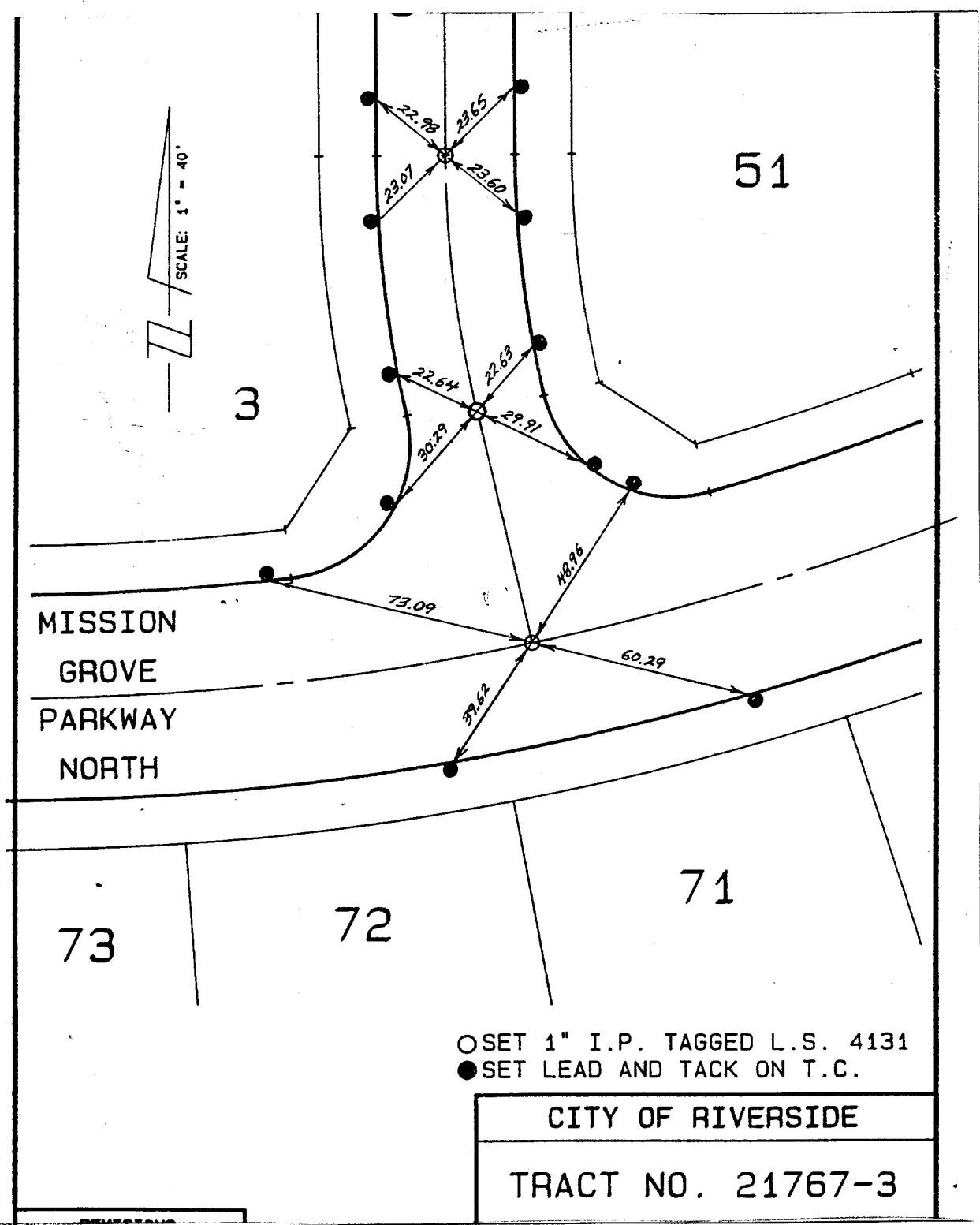


Street: OAKMEADOW DRIVE 6055. TIE X-Street: MISSION GROVE PKWY NORTH
 OFFICIAL USE ONLY



○ SET 1" I.P. TAGGED L.S. 4131
 ● SET LEAD AND TACK ON T.C.

CITY OF RIVERSIDE
 TRACT NO. 21767-3

× FD. Ramset Nail on T/C ● FD. LD. & TK. on T/C
 ■ FD. "C" Nail on T/C ○ Set LD. & TK. on T/C

Scale:
 Date:
 Drawn by:
 W.O.:
 F.B.:

OFFICIAL TIE PLAT
CITY OF RIVERSIDE

These ties are for the purpose of perpetuating the found monumentation. No claim is made as to the relationship of the points or lines shown hereon to true boundary locations.

Sheet 1 of 1
 File No.: