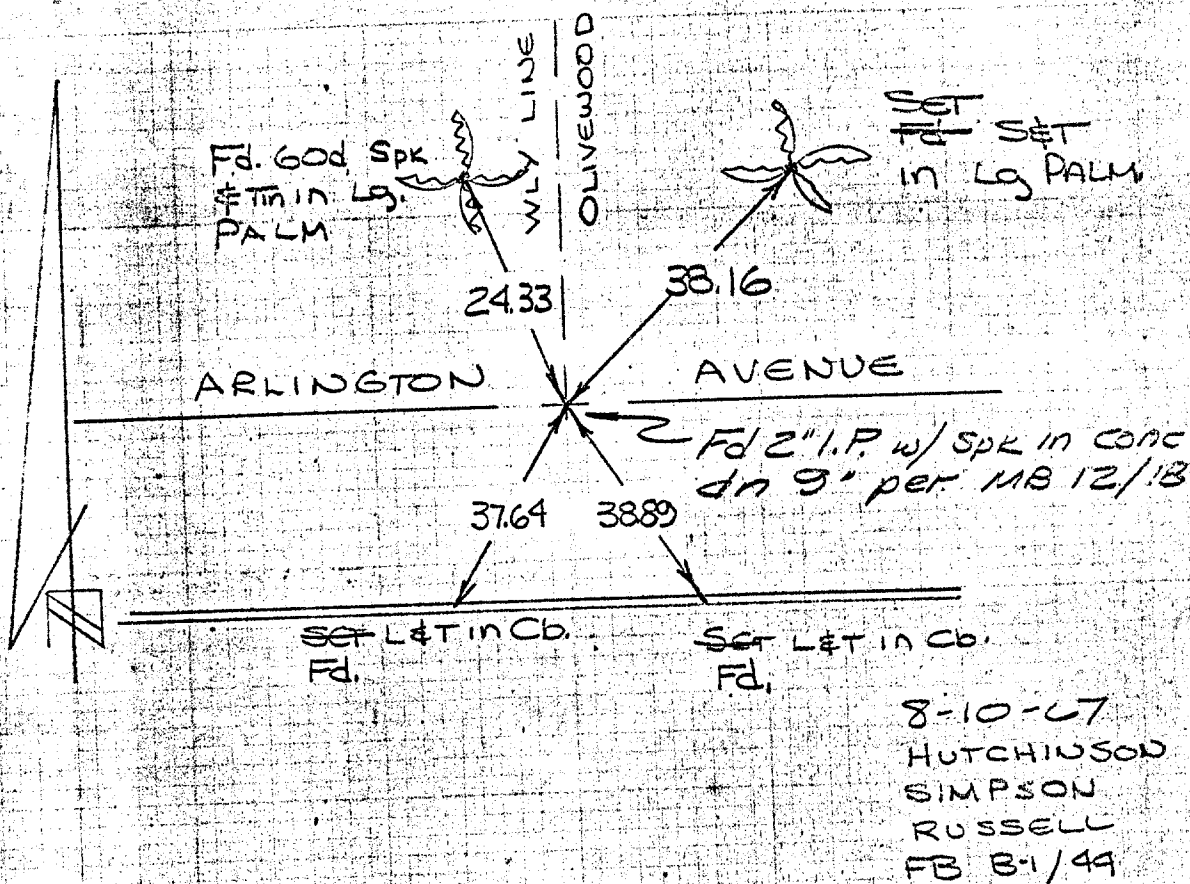


ARLINGTON AVE  
AT  
WLY LINE OLIVEWOOD  
AVE (LOT A)  
MB 12/18

REFERENCE:  
RIVERSIDE INDUSTRIAL  
DEVELOPMENT PROJECT  
MB 12/18

SWING TIES



× FD. Ramset Nail on T/C  
■ FD. "C" Nail on T/C

● FD. LD. & TK. on T/C  
○ Set LD. & TK. on T/C

Scale:

Date:

Drawn by:

W.O.:

F.B.:

## OFFICIAL TIE PLAT CITY OF RIVERSIDE

*These ties are for the purpose of perpetuating the found monumentation. No claim is made as to the relationship of the points or lines shown hereon to true boundary locations.*

Sheet 1 of 1

File No.:

Street: OLIVEWOOD AVE

X-Street: OFFICIAL USE ONLY

ARLINGTON AVE

6213.71E