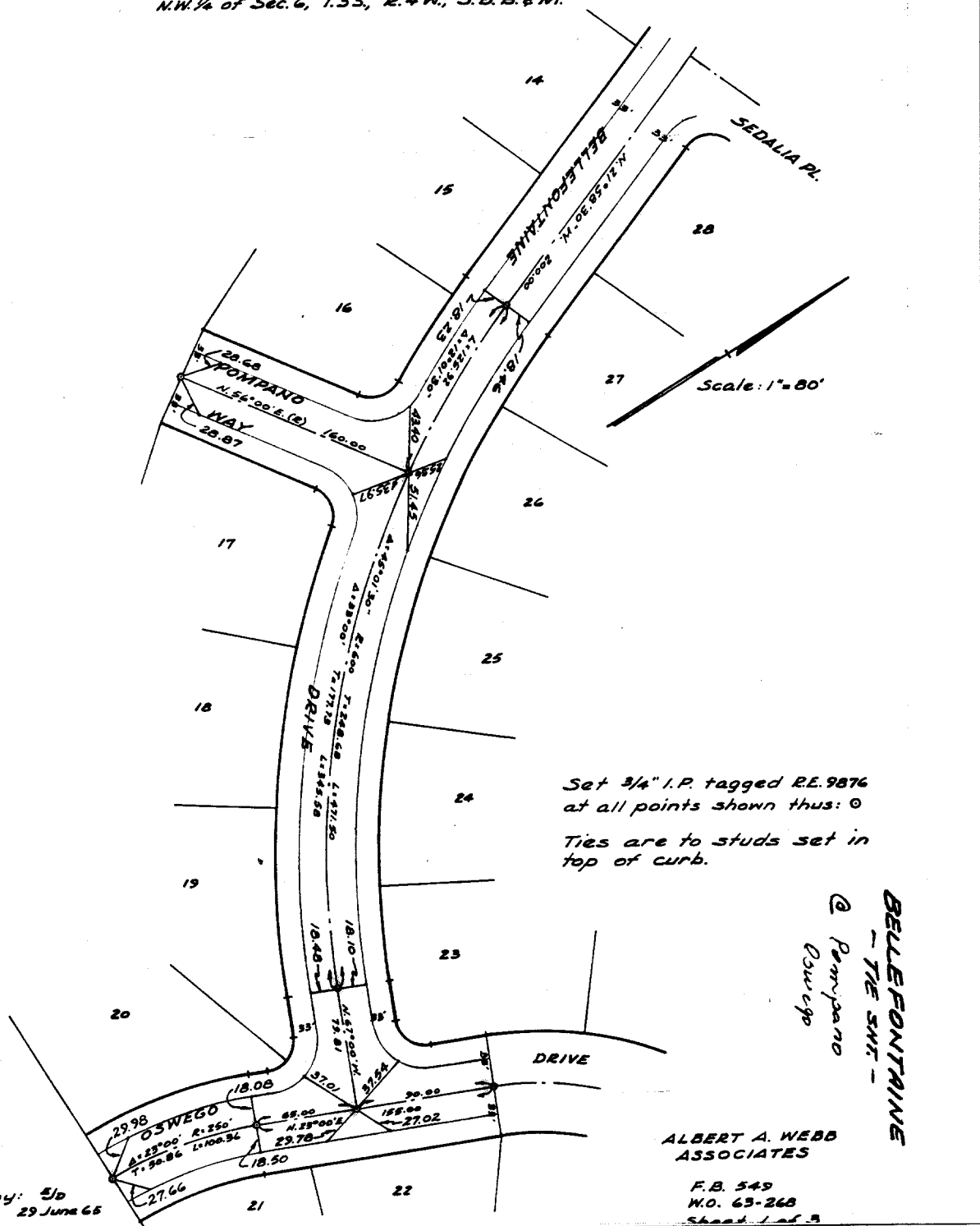


117-159

Being a subdivision of a portion of the
N.W. 1/4 of Sec. 6, T.35, R.4W., S.B.B. & M.



Set 3/4" I.P. tagged R.E. 9876
at all points shown thus: ○
Ties are to studs set in
top of curb.

BELLEFONTAINE
- THE SHR -
@ Pompano
Cove

ALBERT A. WEBB
ASSOCIATES

F.B. 549
W.O. 63-268
Sheet 1 of 3

Drawn by: *5/d*
Date: 29 June 65

- ✕ FD. Ramset Nail on T/C
- FD. LD. & TK. on T/C
- FD. "C" Nail on T/C
- Set LD. & TK. on T/C

Scale:
Date:
Drawn by:
W.O.:
F.B.:

OFFICIAL TIE PLAT
CITY OF RIVERSIDE

*These ties are for the purpose of perpetuating the found
monumentation. No claim is made as to the relationship of
the points or lines shown hereon to true boundary locations.*

TRACT 2776

Sheet 1 of 3

File No.:

Street: **OSWEGO DR.**
631.TIF

X-Street: **BELLEFONTAINE DR.**

OFFICIAL USE ONLY