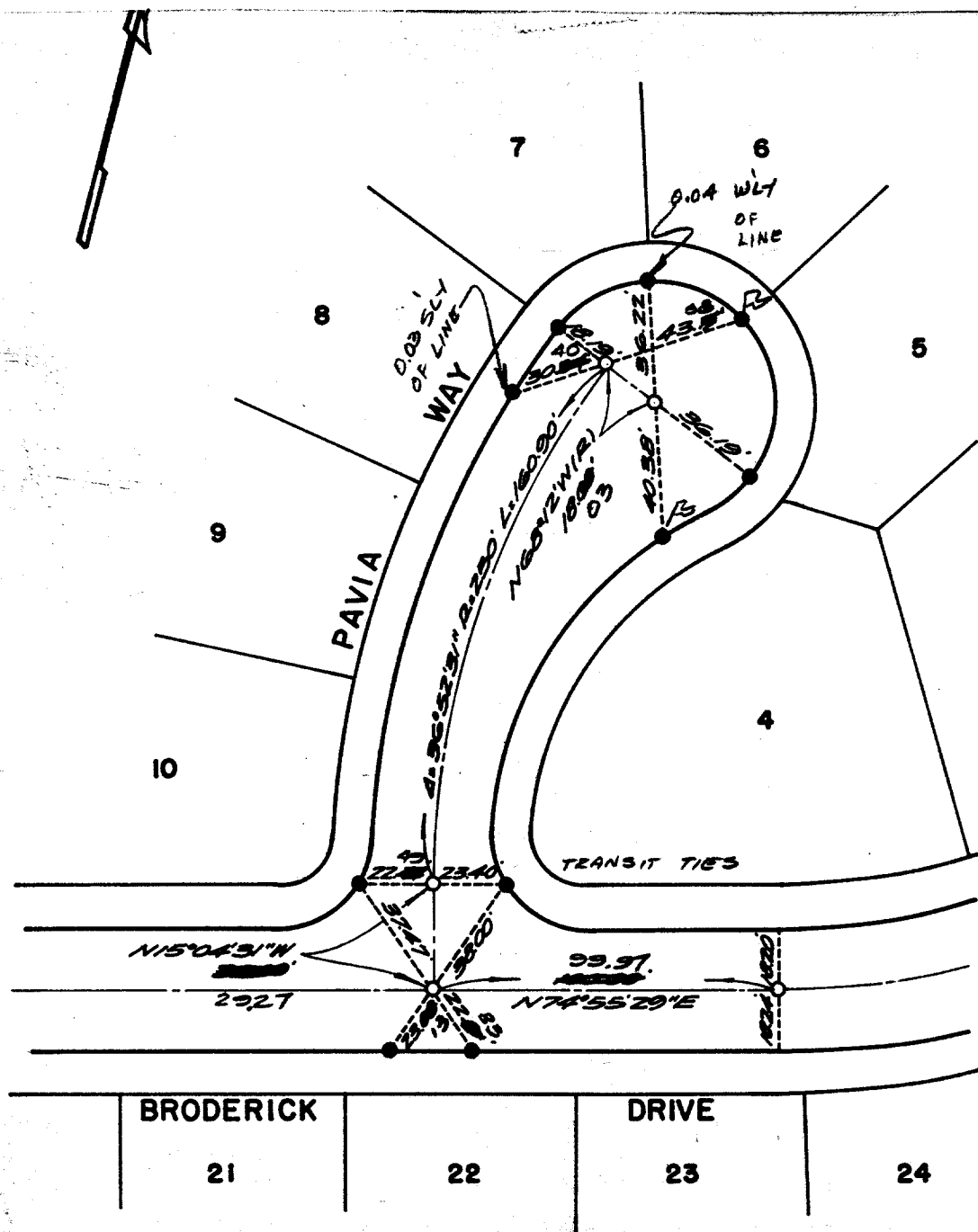


Street: PAVIA WAY X-Street: BRODERICK DRIVE
6366.TIF OFFICIAL USE ONLY



Set monuments per Ordinance No. 461, Std. No. 42 at all points shown thus.

SET STUD & TAG R.C.E 9876 IN CURB AT ALL POINTS SHOWN THUS.

- ✕ FD. Ramset Nail on T/C
- FD. LD. & TK. on T/C
- FD. "C" Nail on T/C
- Set LD. & TK. on T/C

Scale:
 Date:
 Drawn by:
 W.O.:
 F.B.:

OFFICIAL TIE PLAT
CITY OF RIVERSIDE

These ties are for the purpose of perpetuating the found monumentation. No claim is made as to the relationship of the points or lines shown hereon to true boundary locations.

Sheet 1 of 1
 File No.: