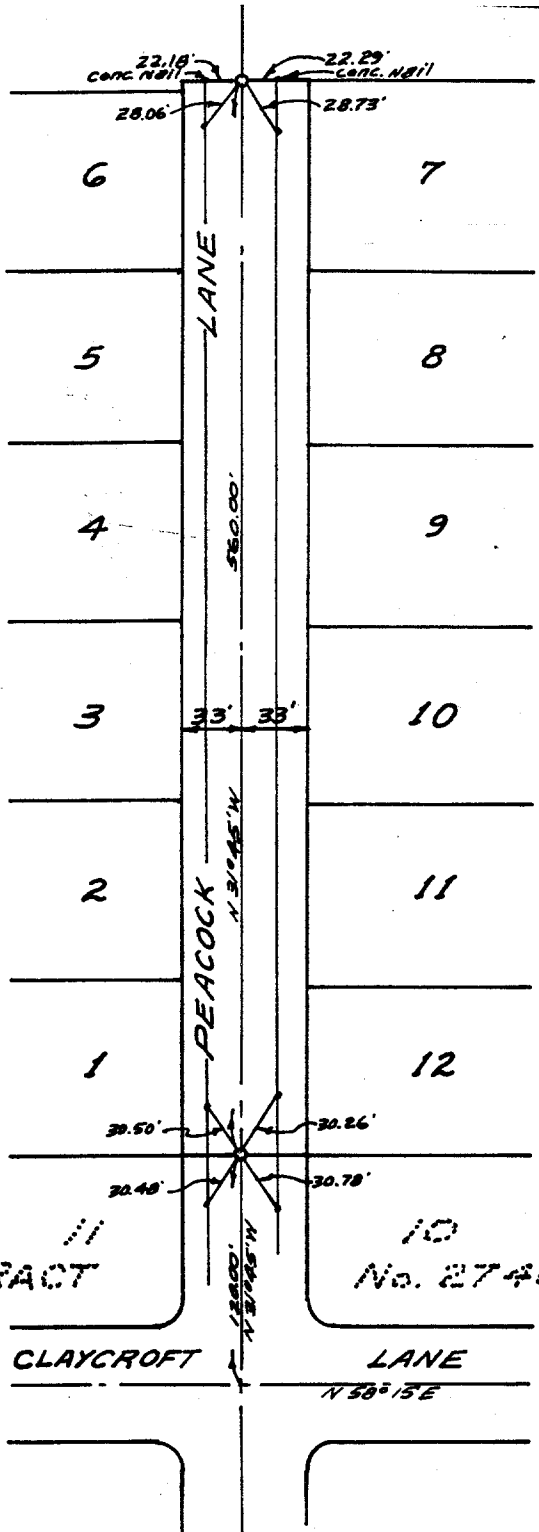


Street: PEACOCK LANE NLY X-Street: CLAYCROFT LANE

6375.71F

OFFICIAL USE ONLY



Scale 1" = 100'

Set 3/4" Iron pipe lagged RE 9876 at all points shown thus O.
Tie are to studs set in top

TRACT 3274

Being a subdivision of a portion of Section 9, T.35, R.6W. of the Rancho La Sierra per map book G, page 70 Records of Riverside County, California

TRACT

No. 2740

ALBERT A. WEBB ASSOCIATES

- ✕ FD. Ramset Nail on T/C
- FD. "C" Nail on T/C

- FD. LD. & TK. on T/C
- Set LD. & TK. on T/C

Scale:
Date:
Drawn by:
W.O.: 65-38
F.B.: 623

OFFICIAL TIE PLAT
CITY OF RIVERSIDE

These ties are for the purpose of perpetuating the found monumentation. No claim is made as to the relationship of the points or lines shown hereon to true boundary locations.

TRACT 3274

Sheet 1 of 1

File No.: