

650.71F

BENTLEY ST. @ SWENSON & CUL-DE-SAC

# CSL ENGINEERING, INC.

CIVIL ENGINEERING

SURVEYING

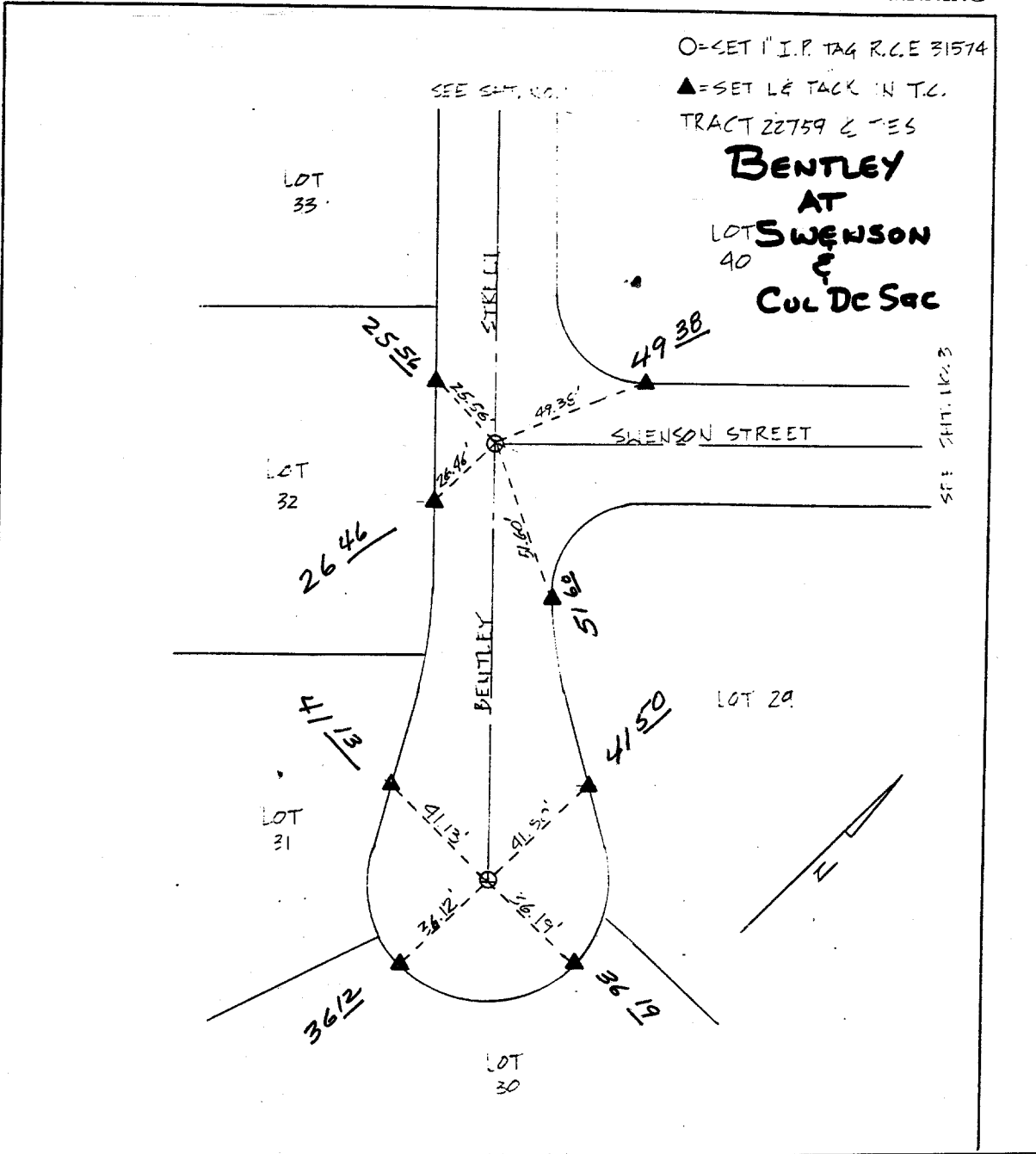
LAND PLANNING

SHT 2 OF 9  
JN. 180 22759

O=SET 1" I.P. TAG R.C.E 31574

▲=SET LE TACK IN T.C.  
TRACT 22759 & TES

**BENTLEY  
AT  
SWENSON  
&  
CUL DE SAC**



- ✕ FD. Ramset Nail on T/C
- FD. "C" Nail on T/C

- FD. LD. & TK. on T/C
- Set LD. & TK. on T/C

Street: **BENTLEY ST.**  
**650.71F**

X-Street: **SWENSON ST.**  
OFFICIAL USE ONLY

Scale:  
Date:  
Drawn by:  
W.O.:  
F.B.:

## OFFICIAL TIE PLAT CITY OF RIVERSIDE

*These ties are for the purpose of perpetuating the found monumentation. No claim is made as to the relationship of the points or lines shown hereon to true boundary locations.*

Sheet 1 of 1  
File No.: