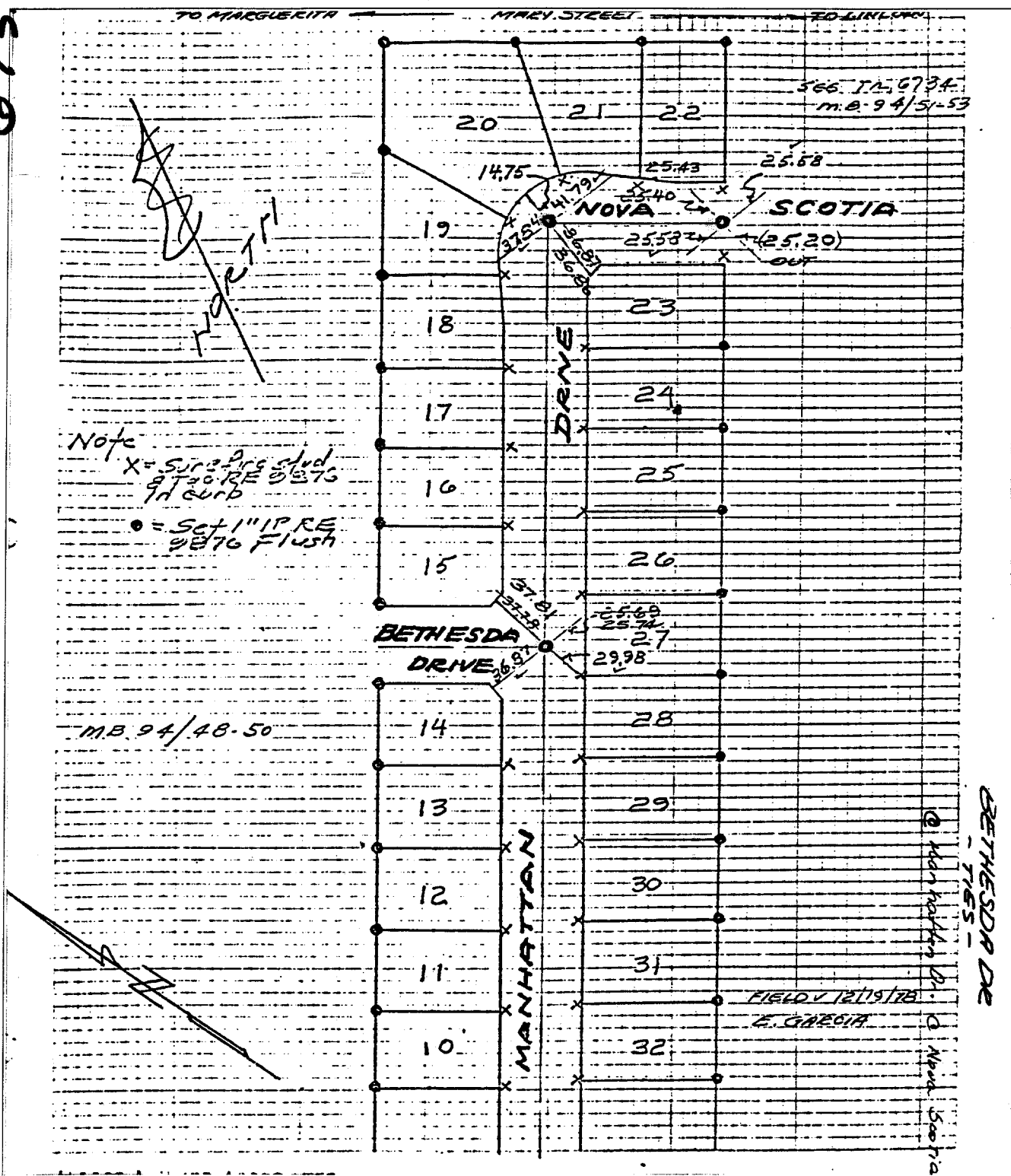


673.71F



Note
 X = Set 3/8" IR Stud
 9" x 9" RE 5/8" x 7/8"
 in curb
 ● = Set 1" IR RE
 2" x 2" Flush

Street: BETHESDA DR
673.71F

X-Street: MANHATTAN DR.
 OFFICIAL USE ONLY

- ✕ FD. Ramset Nail on T/C
- FD. LD. & TK. on T/C
- FD. "C" Nail on T/C
- Set LD. & TK. on T/C

Scale:
 Date:
 Drawn by:
 W.O.:
 F.B.:

OFFICIAL TIE PLAT

CITY OF RIVERSIDE

These ties are for the purpose of perpetuating the found
 monumentation. No claim is made as to the relationship of
 the points or lines shown hereon to true boundary locations.

Sheet 1 of 1
 File No.: