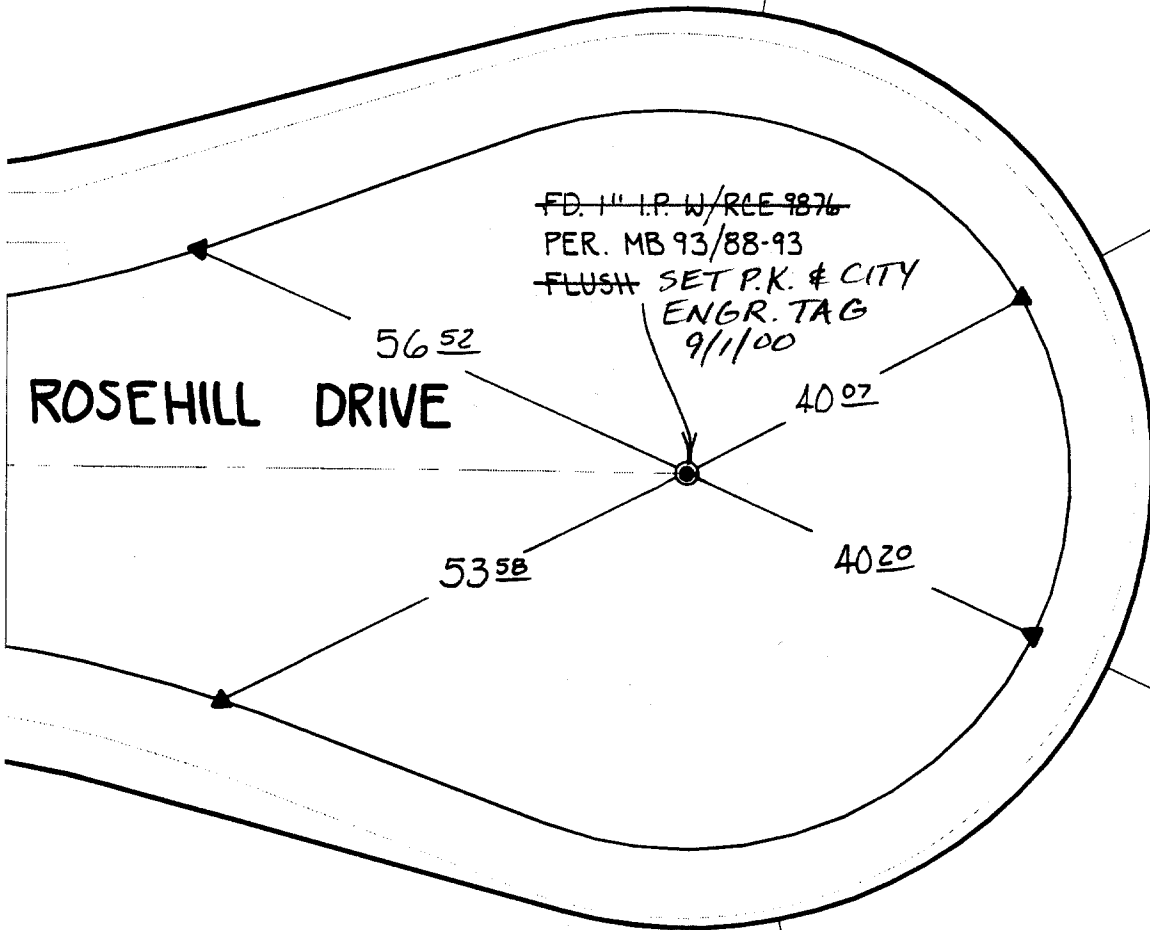


# SWING TIES

Street: **6979 TFE** ROSEHILL DRIVE  
 X-Street: OFFICIAL USE ONLY  
 CUL-DE-SAC



~~FD. 1" I.P. W/RCE 9876~~  
 PER. MB 93/88-93  
~~FLUSH SET P.K. & CITY~~  
 ENGR. TAG  
 9/1/00

ROSEHILL DRIVE

56<sup>52</sup>

40<sup>02</sup>

53<sup>58</sup>

40<sup>20</sup>

HISTORICAL DATA  
 - MB 93/88-93

*\*NOTE: P.K. AND CITY ENGINEER TAG TO BE SET @ SURFACE AFTER STREET CONSTRUCTION IS COMPLETE. (IF POSSIBLE)*

- ▲ FD. STUD + RCE 9876 TAG ON T/C
- ✕ FD. Ramset Nail on T/C
- FD. LD. & TK. on T/C
- FD. "C" Nail on T/C
- Set LD. & TK. on T/C

Scale: 1" = 20'  
 Date: 06/15/00  
 Drawn by: SURVEY  
 W.O.:  
 F.B.:

## OFFICIAL TIE PLAT CITY OF RIVERSIDE

*These ties are for the purpose of perpetuating the found monumentation. No claim is made as to the relationship of the points or lines shown hereon to true boundary locations.*



Sheet 1 of 1  
 File No.: