

HISTORICAL DATA
 ALHAMBRA ADD
 MB 11-79
 CRFB 865-30
 CRFB 930-68

SWING TIES

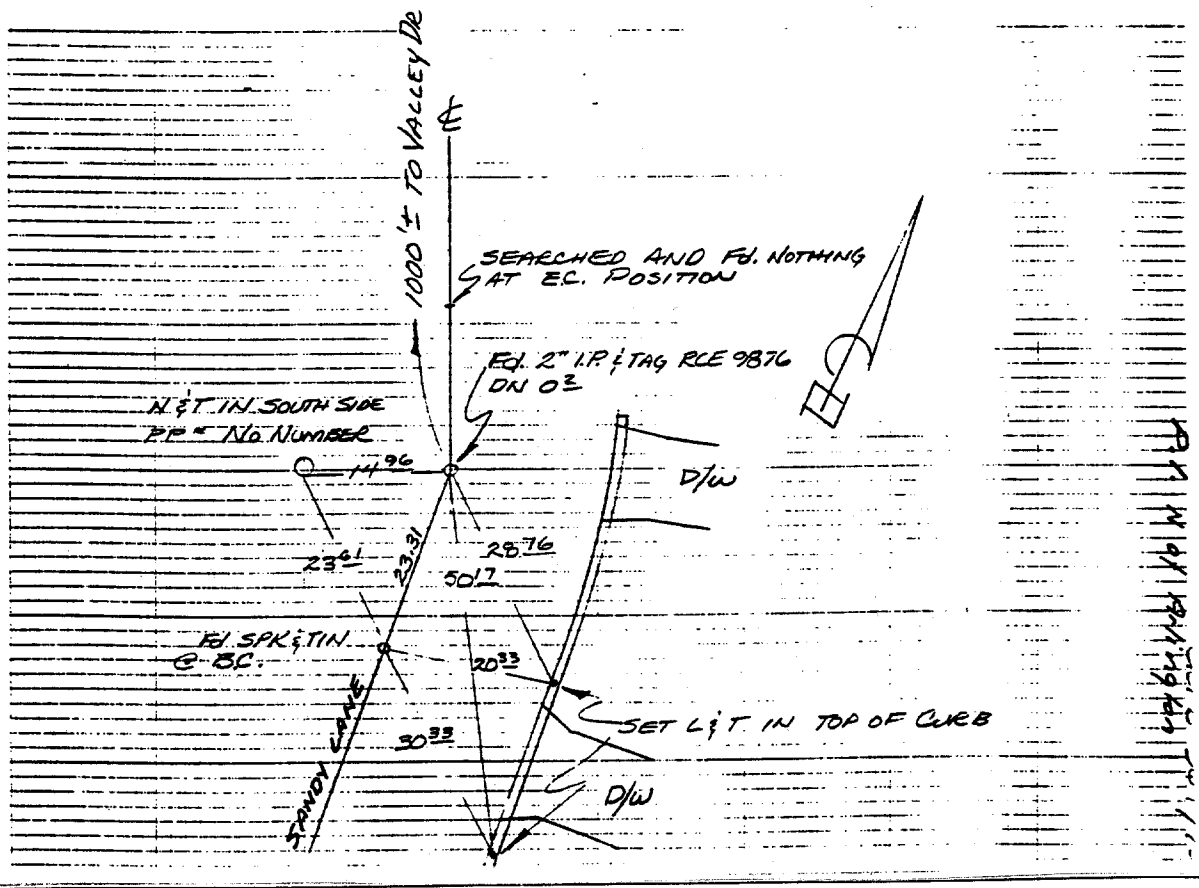
CREW
 RALSTON
 CONNER
 MARCH 8, 1976
 CRFB 964-75

2" I.P. ON P.I. ON SANDY LANE
 1710'± NORTH OF ARLINGTON

Street: SANDY LANE
 7139.77E

N/O
 OFFICIAL USE ONLY

X-Street: ARLINGTON AVE



- ✕ FD. Ramset Nail on T/C
- FD. LD. & TK. on T/C
- FD. "C" Nail on T/C
- Set LD. & TK. on T/C

Scale:
 Date:
 Drawn by:
 W.O.:
 F.B.: 964/75

OFFICIAL TIE PLAT
CITY OF RIVERSIDE
 These ties are for the purpose of perpetuating the found monumentation. No claim is made as to the relationship of the points or lines shown hereon to true boundary locations.

Sheet 1 of 1
 File No.: