

716.71F

J. F. DAVIDSON ASSOCIATES
CIVIL ENGINEERS • SURVEYORS • PLANNERS

1014/06

F.B. 1014 036

SURVEY OF TRACT 3844 - CAL-FED.

FOR 2 TIES

W.O. No. 2010

DATE 12/1/69

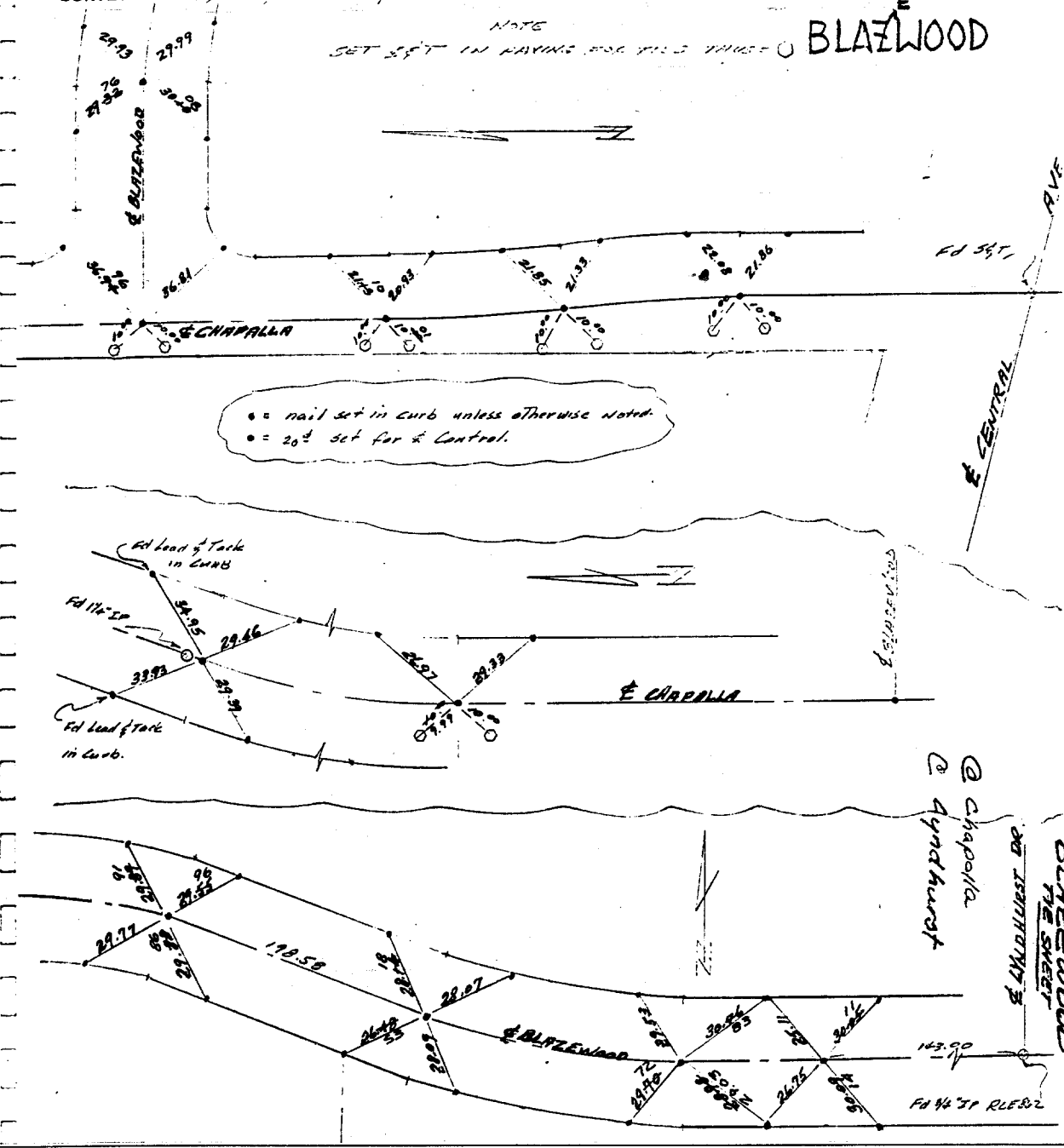
SURVEY PARTY Davidson, Davidson, Johnson

REF.

A.M.

NOTE
SET SET IN HAVING FOR TIE VALUE

BLAZEWOOD



● = nail set in curb unless otherwise noted.
 ○ = 20' set for & Control.

Ed Lead of Tack in Curb

Ed Lead of Tack in Curb

Ed Lead of Tack in Curb

Chapalla
 Ayndhurst
 CHAPALLA
 20' ISMITHWAY
 143.90
 Ed 1/4" T/R RLB32

- × FD. Ramset Nail on T/C
- FD. LD. & TK. on T/C
- FD. "C" Nail on T/C
- Set LD. & TK. on T/C

Scale:
 Date:
 Drawn by:
 W.O.:
 F.B.:

OFFICIAL TIE PLAT
CITY OF RIVERSIDE

These ties are for the purpose of perpetuating the found monumentation. No claim is made as to the relationship of the points or lines shown hereon to true boundary locations.

Sheet 1 of 1
 File No.:

Street: BLAZEWOOD
716.71F
 X-Street: CHAPALLA
 OFFICIAL USE ONLY