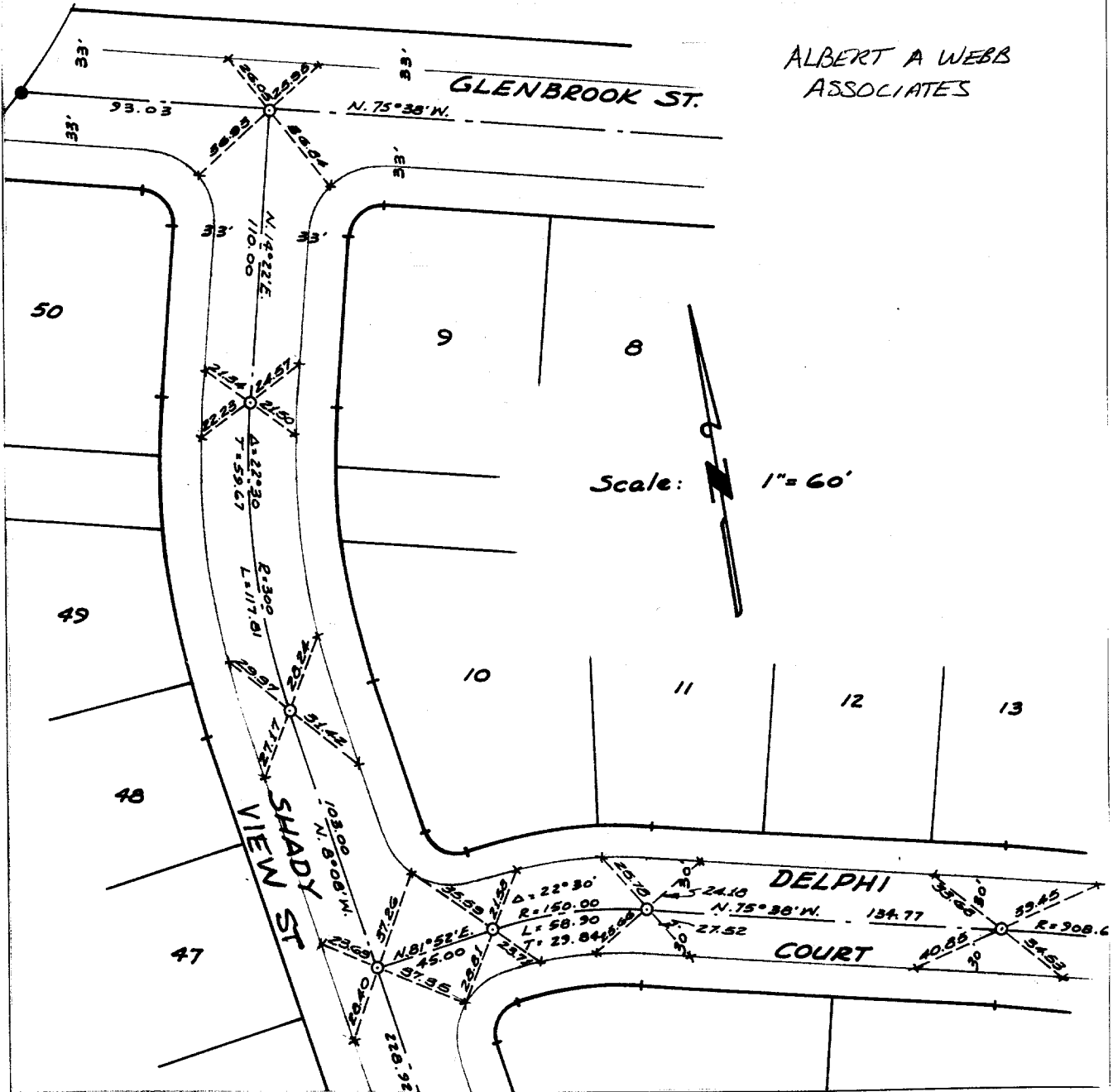


TRACT 3151

Being a subdivision of portions of Lots 11, 14 & 15 of Block 28 of the R.L. & I. Co. lands per M.B. 1 page 70, Records of San Bernardino Co., and portions of the N.W. 1/4 of Sec. 19 and the S.W. 1/4 of Sec. 18, T.3 S., R.5 W., S.B.B. & M. and all of Lots "D", "E" & "F" of Tract 2155 per M.B. 46/30, 31, Records of Riverside Co., Calif.

ALBERT A WEBB
ASSOCIATES



Street: SHADY VIEW ST.
7234 TIF
X-Street: GLENBROOK ST.
OFFICIAL USE ONLY
(A)

- ✕ FD. Ramset Nail on T/C
- FD. LD. & TK. on T/C
- FD. "C" Nail on T/C
- Set LD. & TK. on T/C

Scale:
Date:
Drawn by: EJD
W.O.: 64-329
F.B.:

OFFICIAL TIE PLAT
CITY OF RIVERSIDE

These ties are for the purpose of perpetuating the found monumentation. No claim is made as to the relationship of the points or lines shown hereon to true boundary locations.

TRACT 3151
Sheet 1 of 3
File No.: