

PEREZ-LOUFEK-DIAZ JR.

1029

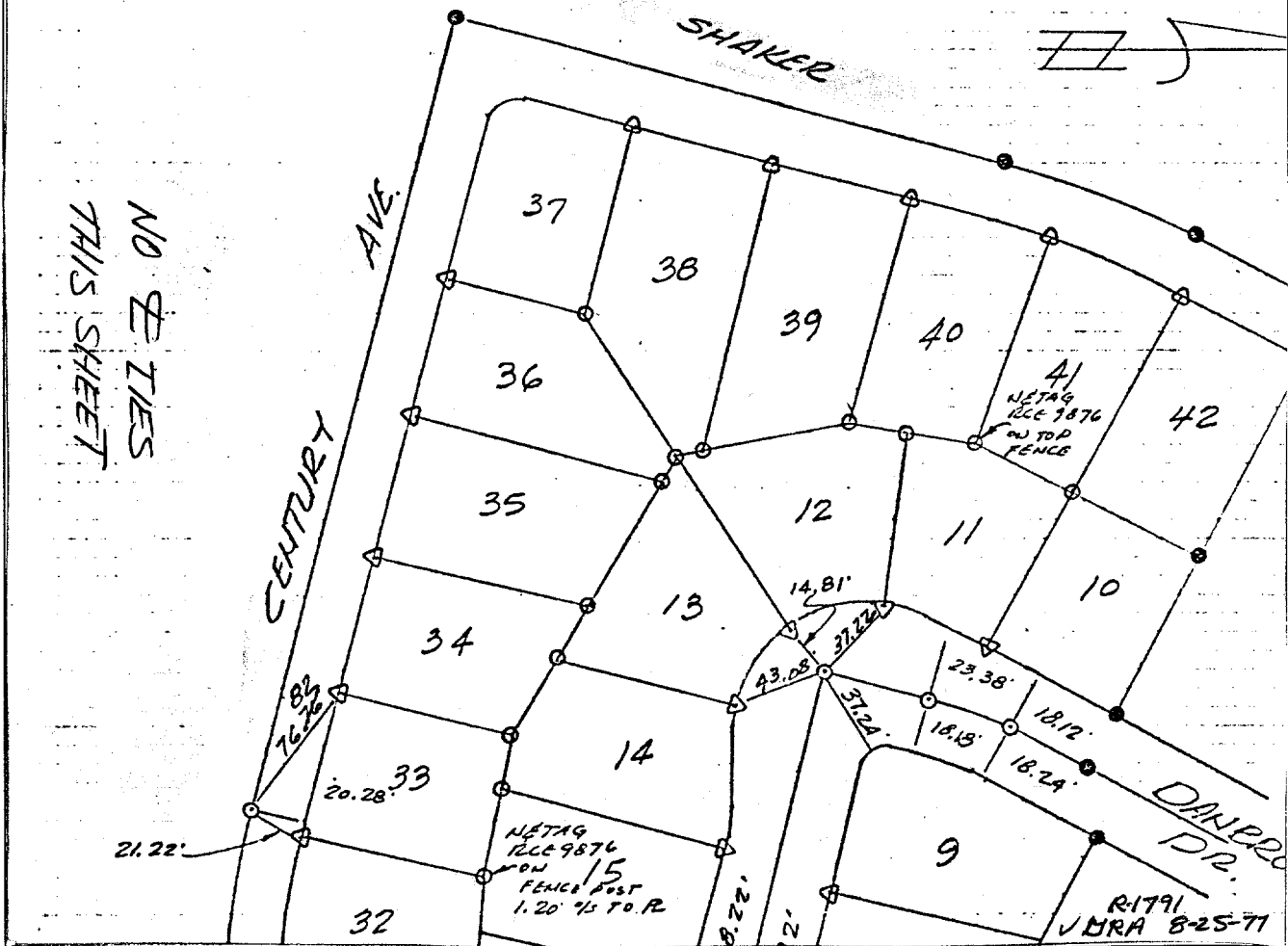
M.B. 84/63-65

*[Handwritten signature]*

- = FD MONUMENTS
- = SET 1" I.P. R.C.E. 9876 FLUSH
- ◻ = SET JURE-FIRE STUD & TAG RCE 9876 ON TOP OF CURB @ ALL LOT LINE PROJECTED

M.B. 84/63-65

NO TIES  
THIS SHEET



- × FD. Ramset Nail on T/C
- FD. LD. & TK. on T/C
- FD. "C" Nail on T/C
- Set LD. & TK. on T/C

Scale: \_\_\_\_\_  
 Date: \_\_\_\_\_  
 Drawn by: \_\_\_\_\_  
 W.O.: \_\_\_\_\_  
 F.B.: 1029

**OFFICIAL TIE PLAT**  
**CITY OF RIVERSIDE**

*These ties are for the purpose of perpetuating the found monumentation. No claim is made as to the relationship of the points or lines shown hereon to true boundary locations.*

TRACT 5900

Sheet 1 of 1

File No.: \_\_\_\_\_

Street: **SHAKER DR.**  
 7239 TIE

X-Street: **CENTURY AVE**

OFFICIAL USE ONLY