

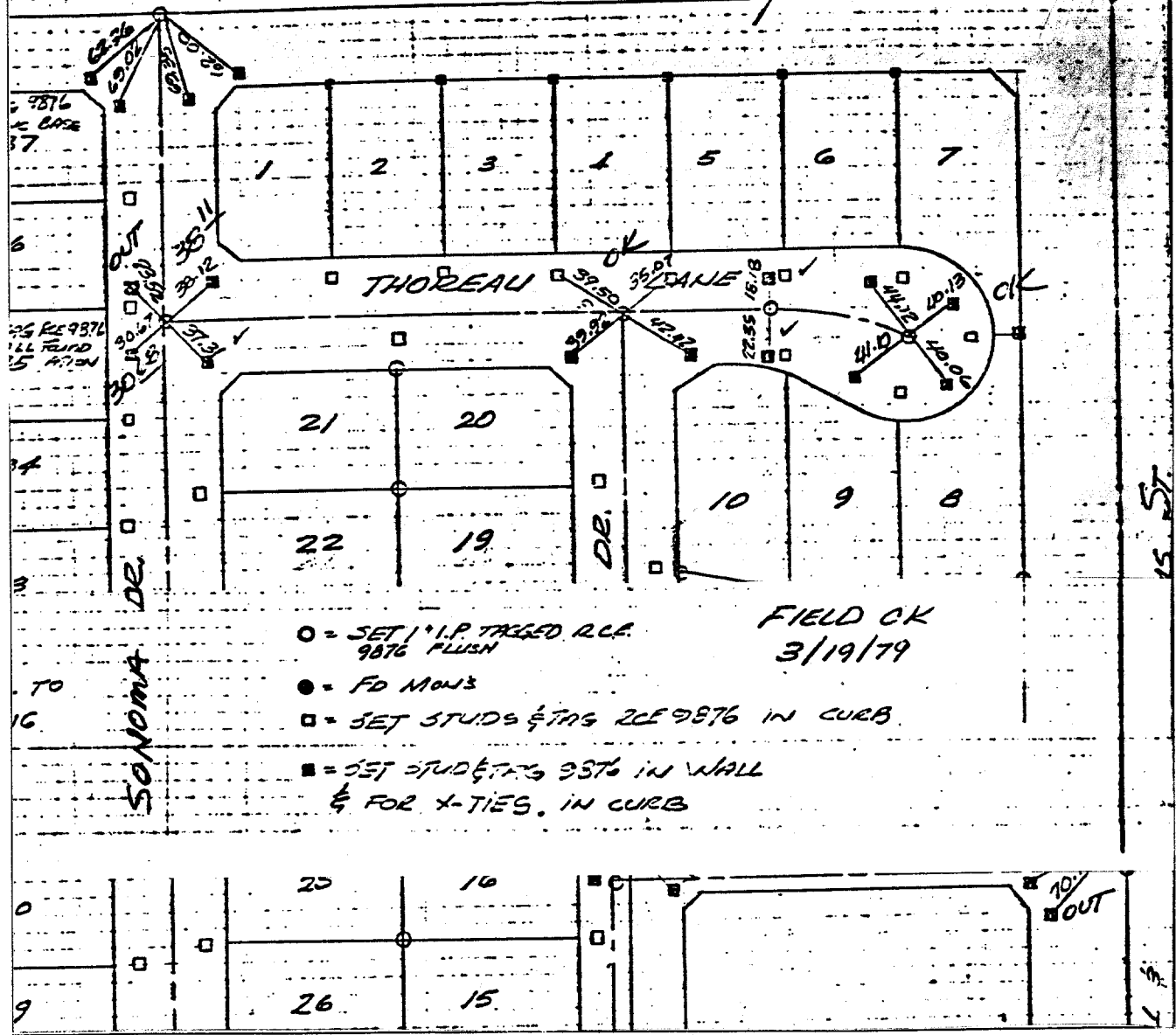
TRACT # 7640

FEB. 12, 77 76-53
SEPT 7, 77 1034 185

PEREZ-LOUFEX-KIPPER
JARDINE-LOUFEX-AGUILEIRA JR.
NOTES CALCD BY

1.B. 88/23,24

LINCOLN AVE



- ⊗ FD. Ramset Nail on T/C
- FD. LD. & TK. on T/C
- FD. "C" Nail on T/C
- Set LD. & TK. on T/C

OFFICIAL TIE PLAT

CITY OF RIVERSIDE

These ties are for the purpose of perpetuating the found monumentation. No claim is made as to the relationship of the points or lines shown hereon to true boundary locations.

Scale:

Date:

Drawn by:

W.O.:

F.B.:

Sheet 1 of 1

File No.:

Street: **SOMOMA DR.**
7351 TIE

X-Street: **THOREAU CN**
OFFICIAL USE ONLY