

TR NO.

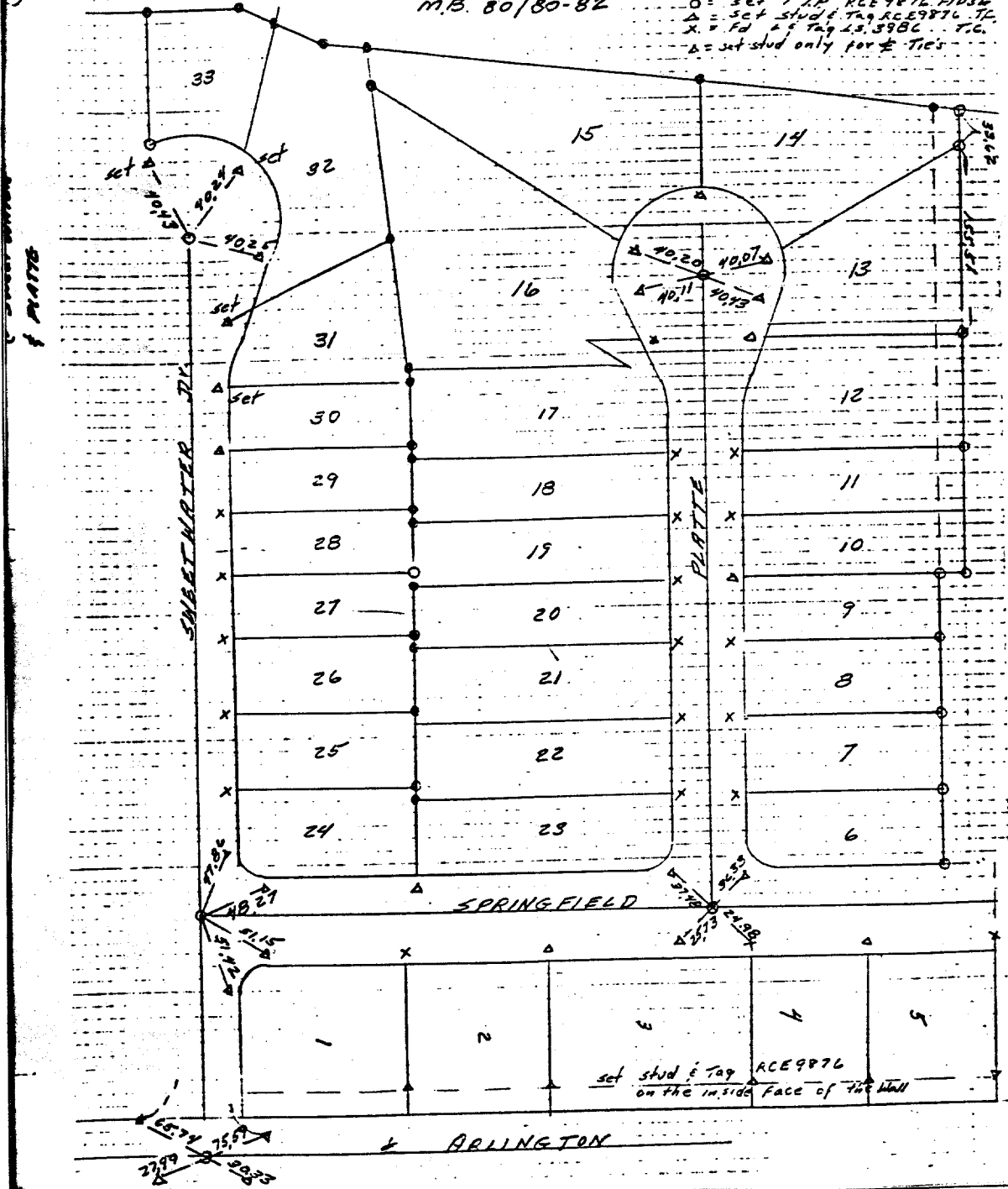
4419-1

DATE 5-28-77 J.O. 76-139

Joe Aguilar H. Evans S. MacLennan FB 1038 PAGE 195

M.B. 80/80-82

- = Fd. 1/2" IP, L.S. 3986
- = set 1" IP RCE9876 Flush
- △ = set stud & Tag RCE9876 T/C
- X = Fd. 1/2" Tag L.S. 3986 T/C
- △ = set stud only for 1/2" Tie's



- × FD. Ramset Nail on T/C
- FD. "C" Nail on T/C

- FD. LD. & TK. on T/C
- Set LD. & TK. on T/C

set stud & Tag RCE9876 on the inside face of the wall

Street: SPRINGFIELD
7378 TIE

X-Street: PLATTE
B/F Sweetwater & PLATTE

OFFICIAL USE ONLY

Scale:
Date:
Drawn by:
W.O.:
F.B.:

OFFICIAL TIE PLAT

CITY OF RIVERSIDE

These ties are for the purpose of perpetuating the found monumentation. No claim is made as to the relationship of the points or lines shown hereon to true boundary locations.

Sheet 1 of 1
File No.: