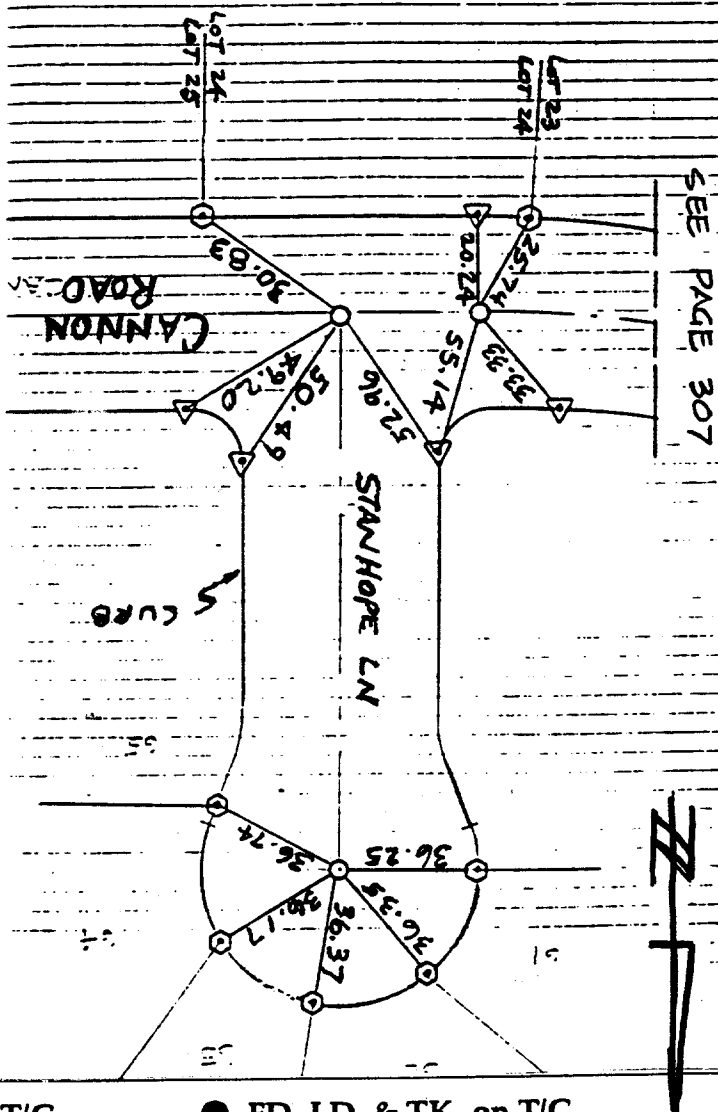


Street: **STANHOPE LN**
7387 TIF
 X-Street: **CANNON RD.**
 OFFICIAL USE ONLY

● INDICATES FOUND "I.P.W./PLASTIC PULG. BUSH L.S.3018
 ○ INDICATES SET "I.P.W./PLASTIC PULG. BUSH L.S.3018
 ▲ SET RAMSET NAIL IN T.C. TAGGED L.S.3018
 ⊙ SET RAMSET NAIL IN T.C. TAGGED L.S.3018
 ON R. PROD.



- × FD. Ramset Nail on T/C
- FD. LD. & TK. on T/C
- FD. "C" Nail on T/C
- Set LD. & TK. on T/C

OFFICIAL TIE PLAT
CITY OF RIVERSIDE

These ties are for the purpose of perpetuating the found monumentation. No claim is made as to the relationship of the points or lines shown hereon to true boundary locations.

Sheet 1 of 1
 File No.:

SURVEY OF **TIES TRACT No 2**
 FOR **BROCK AHMANICAL**
 SURVEY PARTY **ALCEE MOYER CLOVER**

J. F. DAVIDSON ASSOCIATES
 CIVIL ENGINEERS • SURVEYORS • PLANNERS

W.O. No. **2757** DATE **8-19-87** A.M.
 REF. **FINAL**

F.B. **9767/308**

Scale:
 Date:
 Drawn by:
 W.O.:
 F.B.: