

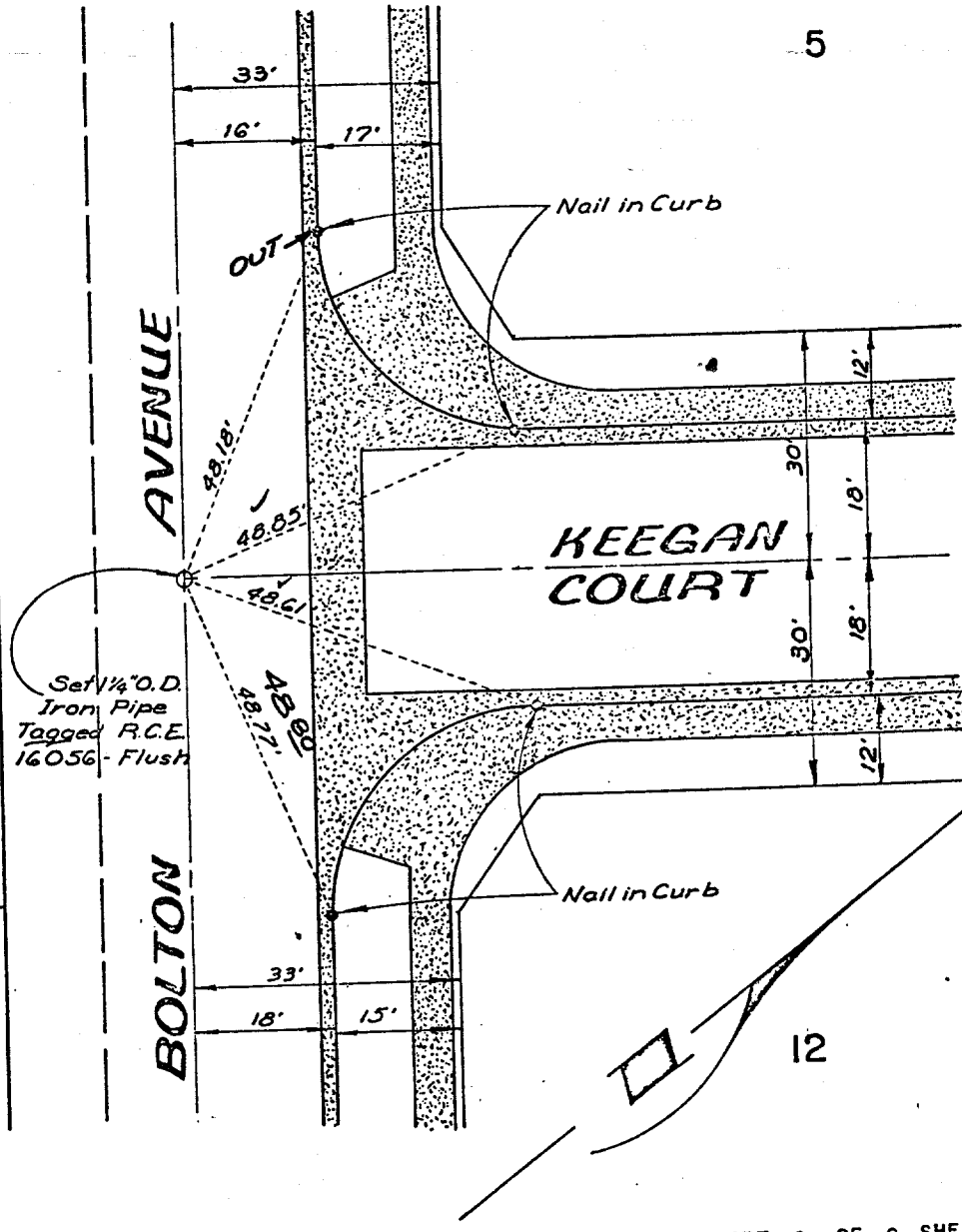
766.71/F

Street: BOLTON AVE

766.71/F

X-Street: KEEGAN CT.

OFFICIAL USE ONLY



Set 1/4" O.D. Iron Pipe Tagged R.C.E. 16056 - Flush

SHEET 6 OF 9 SHEETS

CITY OF RIVERSIDE

L A WAINSCOTT & ASSOCIATES
CIVIL ENGINEERS
GRAND TERRACE, CALIFORNIA

TRACT NO. 8492

- ✕ FD. Ramset Nail on T/C
- FD. "C" Nail on T/C

- FD. LD. & TK. on T/C
- Set LD. & TK. on T/C

OFFICIAL TIE PLAT

CITY OF RIVERSIDE

These ties are for the purpose of perpetuating the found monumentation. No claim is made as to the relationship of the points or lines shown hereon to true boundary locations.

Scale: _____

Date: _____

Drawn by: _____

W.O.: _____

F.B.: _____

Sheet **6** of 9
File No.: _____

© Bolton Ave
KEEGAN COURT