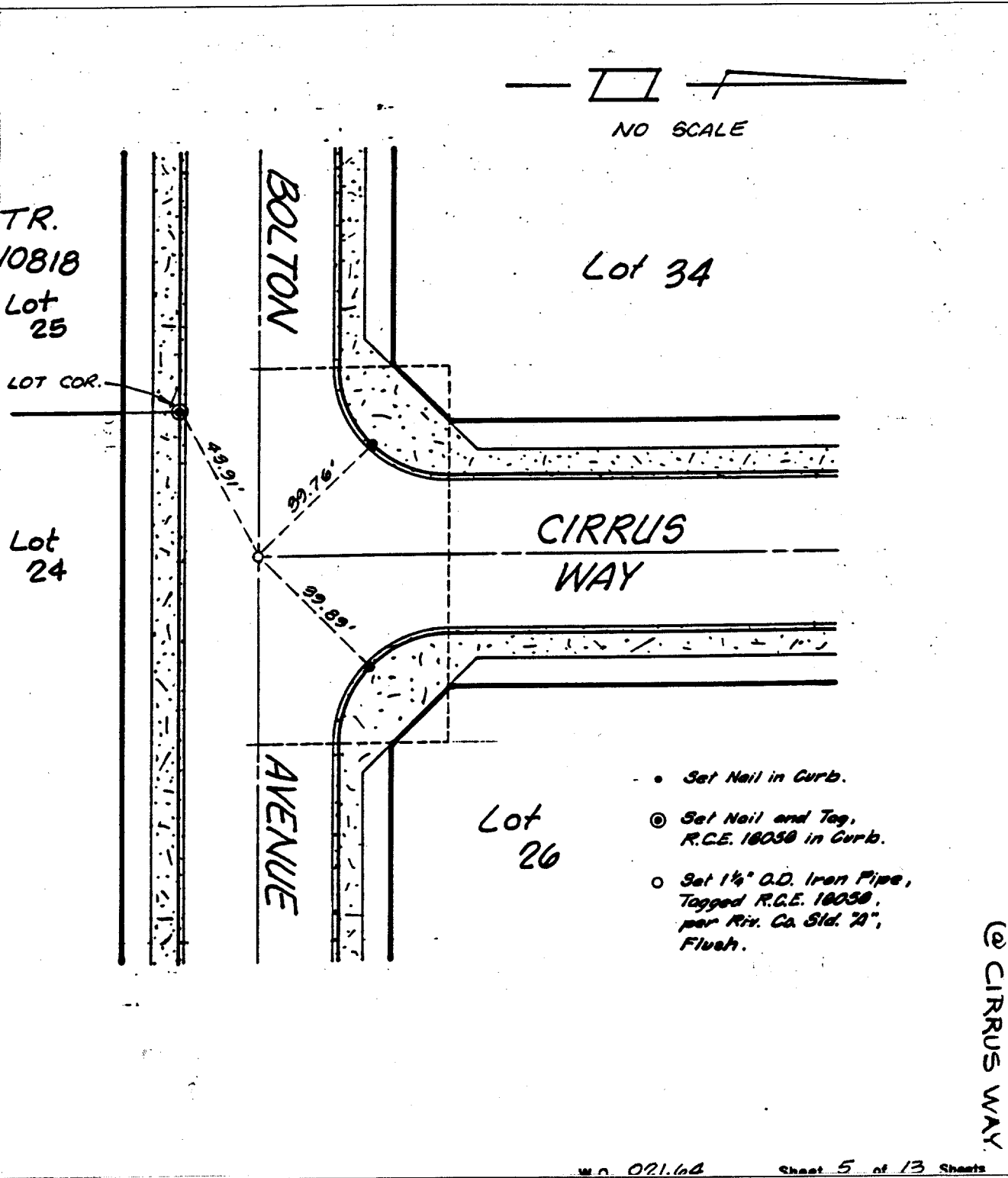


Street: BOLTON AVE

X-Street: CIRRUS WAY
OFFICIAL USE ONLY

FILED



- Set Nail in Curb.
- ⊙ Set Nail and Tag, R.C.E. 18058 in Curb.
- Set 1 1/4" O.D. Iron Pipe, Tagged R.C.E. 18058, per Riv. Co. Std. "A", Flush.

@ CIRRUS WAY.

W.D. 021.64 Sheet 5 of 13 Sheets

- ✕ FD. Ramset Nail on T/C
- FD. LD. & TK. on T/C
- FD. "C" Nail on T/C
- Set LD. & TK. on T/C

Scale:
Date:
Drawn by:
W.O.:
F.B.:

OFFICIAL TIE PLAT
CITY OF RIVERSIDE

These ties are for the purpose of perpetuating the found monumentation. No claim is made as to the relationship of the points or lines shown hereon to true boundary locations.

TRACT 8583
Sheet 5 of 13
File No.: