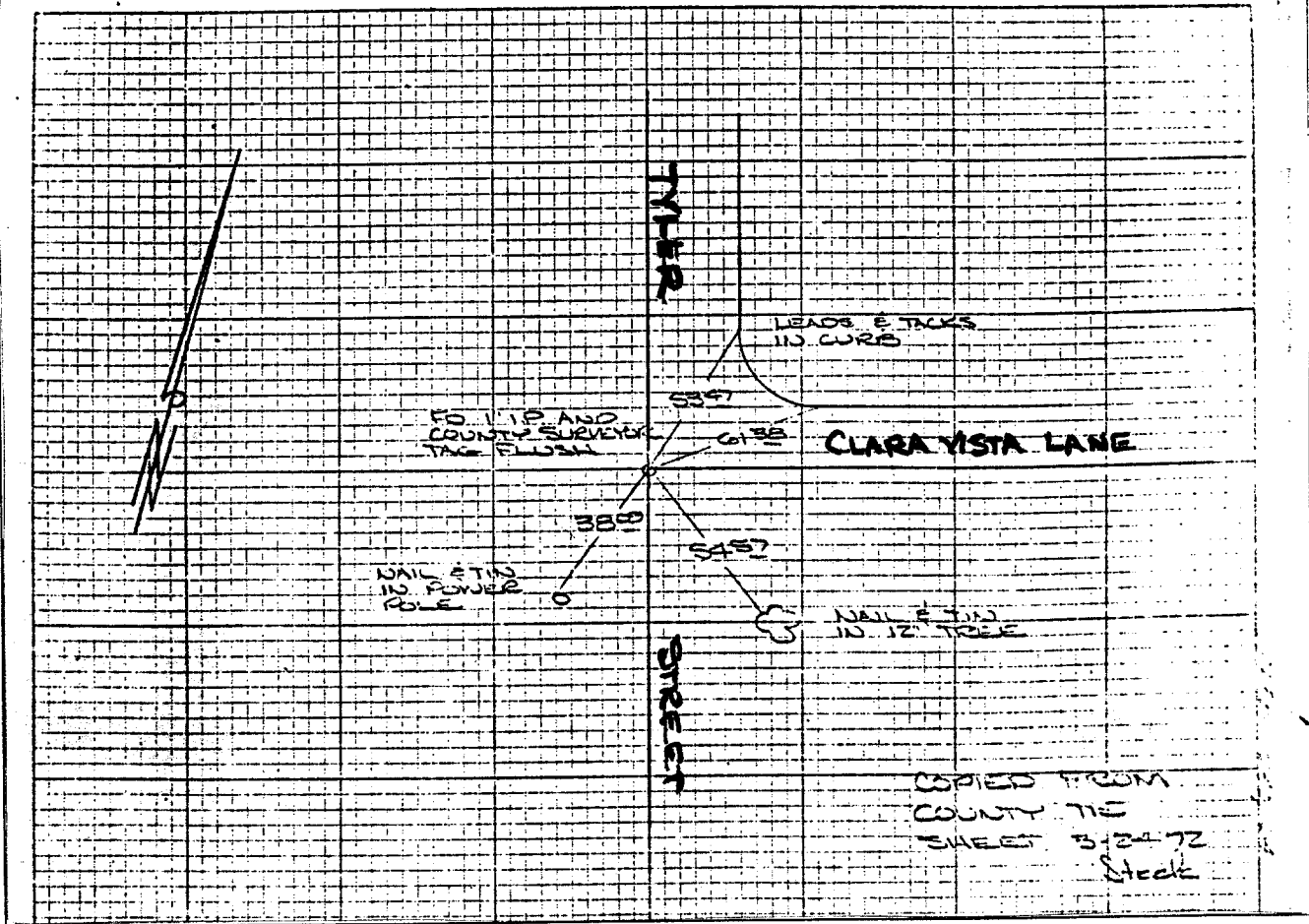


Street: TYLER  
7917 TIE

X-Street: CLARA VISTA  
E'LY  
 OFFICIAL USE ONLY

TYLER STREET AT CLARA VISTA LANE		
HISTORICAL DATA	SWING TIES	CREW: STEELE
		MARCH 1972
		F.B. 940/64



- ✕ FD. Ramset Nail on T/C
- FD. LD. & TK. on T/C
- FD. "C" Nail on T/C
- Set LD. & TK. on T/C

Scale:  
 Date: MARCH - 72  
 Drawn by:  
 W.O.:  
 F.B.: 940/64

## OFFICIAL TIE PLAT

### CITY OF RIVERSIDE

*These ties are for the purpose of perpetuating the found monumentation. No claim is made as to the relationship of the points or lines shown hereon to true boundary locations.*

Sheet 1 of 1  
 File No.: