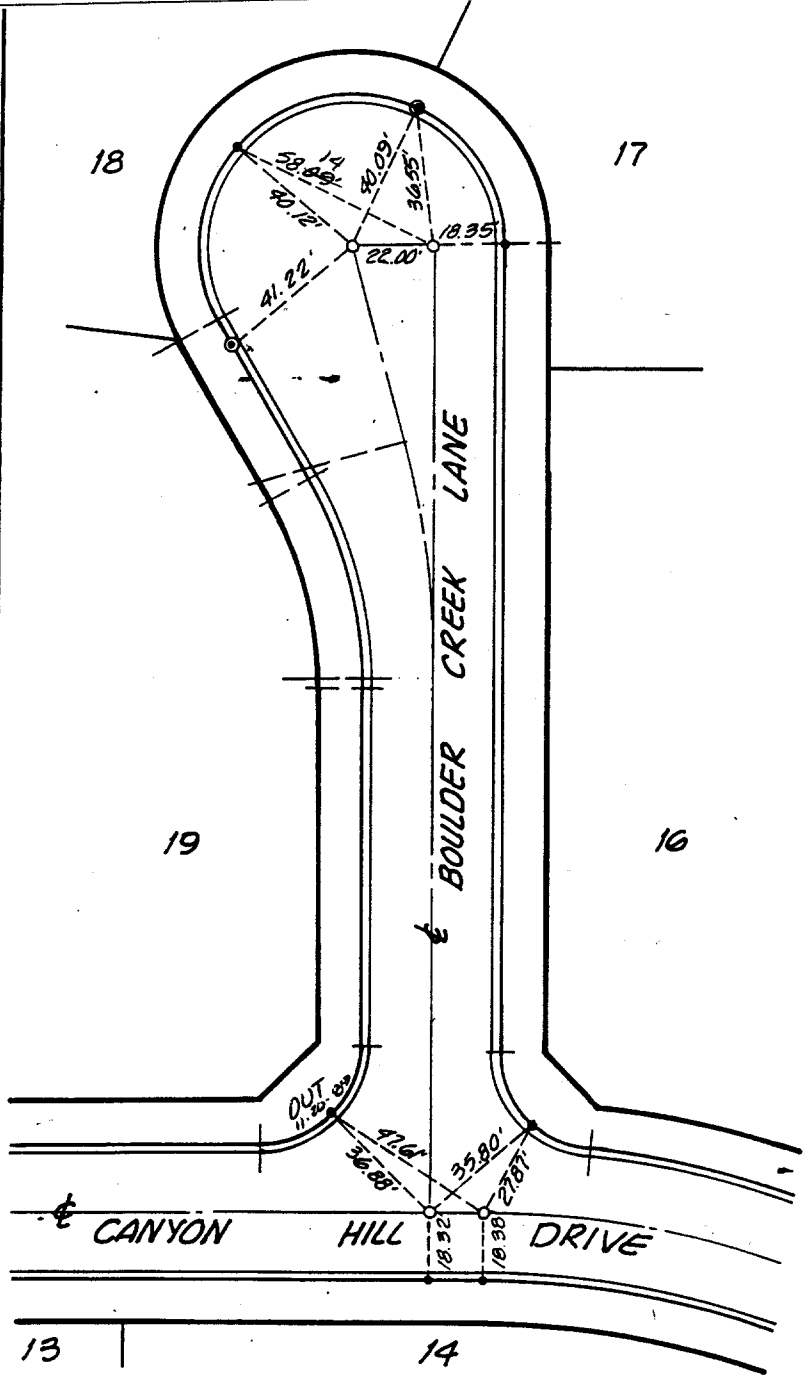


FILED

BOULDER CREEK



- Set Nail in Curb.
- ⊙ Set Nail and Tag R.C.E. 16056 in Curb.
- Set 1 1/4" O.D. Iron Pipe, Tagged R.C.E. 16056, per Riv. Co. Std. "A" Flush.

13 | 14
 TIES MADE DATE: SEPT. 22, 1989
 W.O. 227.04 SHEET 8 OF 9 SHEETS

L A WAINSCOTT & ASSOCIATES
 CIVIL ENGINEERS
 GRAND TERRACE, CALIFORNIA
 (714) 824-1775

CITY OF RIVERSIDE
 TRACT No. 21399

- ✕ FD. Ramset Nail on T/C
- FD. LD. & TK. on T/C
- FD. "C" Nail on T/C
- Set LD. & TK. on T/C

Street: BOULDER CREEK LN
 X-Street: CANYON HILL DRIVE
 OFFICIAL USE ONLY

Scale:
 Date:
 Drawn by:
 W.O.:
 F.B.:

OFFICIAL TIE PLAT
CITY OF RIVERSIDE

These ties are for the purpose of perpetuating the found monumentation. No claim is made as to the relationship of the points or lines shown hereon to true boundary locations.

Sheet 1 of 1
 File No.: