

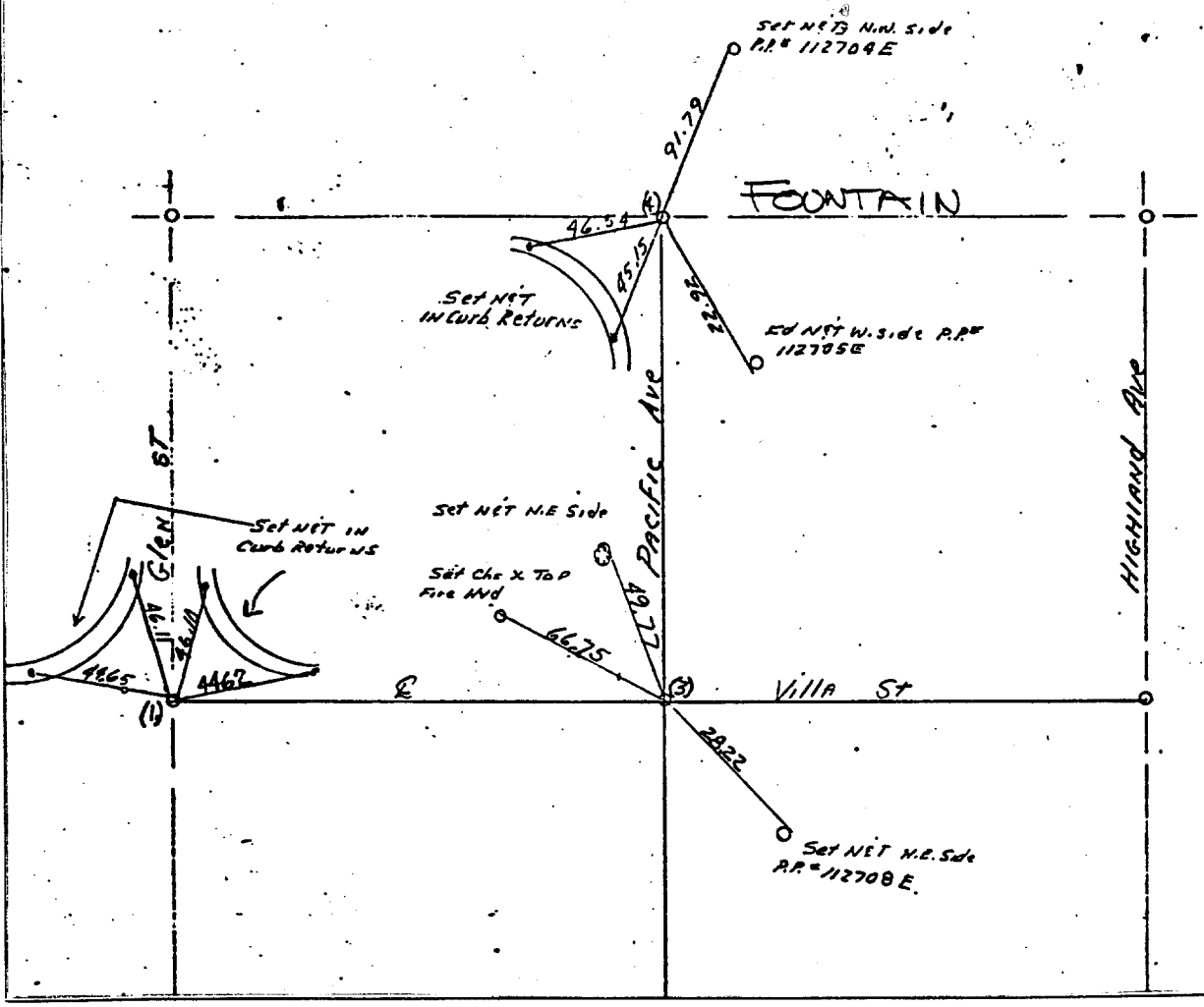
Street: VILLA STREET
8230.71/E
 X-Street: GLEN STREET
 OFFICIAL USE ONLY

SEC. 7 TWP. 2 South. RGE. 4 west TE 41/3
 Date 11-12-73 Temp. 70° WO# 68-8407
 Party Shep, Conset, Waltz, MARTINEZ Origination Riv. Co. SUR.

REFERENCES & NOTES

- (1) Fd 1/2" I.P. T.D. ON 2" x 2" Ties. Inter of Villa ST. & GLEN ST.
- (3) Fd 1/2" I.P. T.D. Flush NO TAG Inter Pacific Ave & Villa ST.
- (4) Fd 1/2" I.P. T.D. ON 2" x 2" Ties. For Inter. of Pacific ST. & Fountain ST.

TB 34/34



- ✕ FD. Ramset Nail on T/C
- FD. LD. & TK. on T/C
- FD. "C" Nail on T/C
- Set LD. & TK. on T/C

Scale:
 Date:
 Drawn by:
 W.O.:
 F.B.:

OFFICIAL TIE PLAT
CITY OF RIVERSIDE

These ties are for the purpose of perpetuating the found monumentation. No claim is made as to the relationship of the points or lines shown hereon to true boundary locations.

Sheet 1 of 1
 File No.: