

Street: **ACADEMY** X-Street: **EC N'LY OF DOLPHIN ST**
8445. TIF OFFICIAL USE ONLY

Scale: 1" = 20'

Date: 09/16/98

Drawn by: scurtis, kge

W.O.:

F.B.:

OFFICIAL TIE PLAT

CITY OF RIVERSIDE

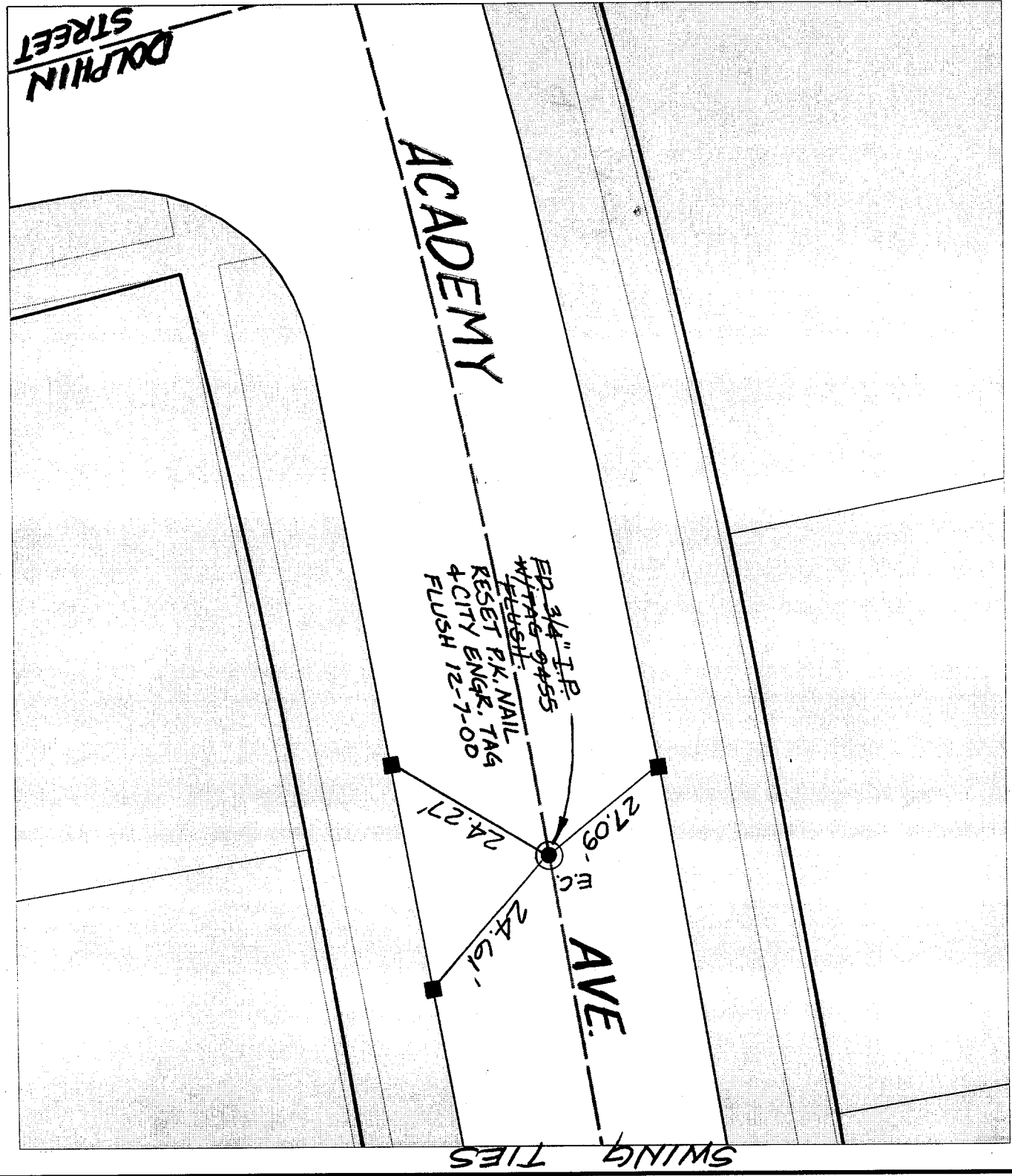
These ties are for the purpose of perpetuating the found monumentation. No claim is made as to the relationship of the points or lines shown hereon to true boundary locations.

Sheet 1 of 1

File No.:



- FD. LD. & TK. on T/C
- Set LD. & TK. on T/C
- FD. "C" Nail on T/C
- × FD. Ramset Nail on T/C



SWING TIES

DOLPHIN STREET

ACADEMY

AVE.

EP 3/4" I.P.
 4/17/98 0455
 W/FEESTH
 RESET P.K. NAIL
 RESSET ENGR. TAG
 4 CITY ENGR. 7-00
 FLUSH 12-7-00

27.09'
 24.27'
 24.61'

EC