

HISTORICAL DATA
 1. 857/42
 2. E-1/4, 6

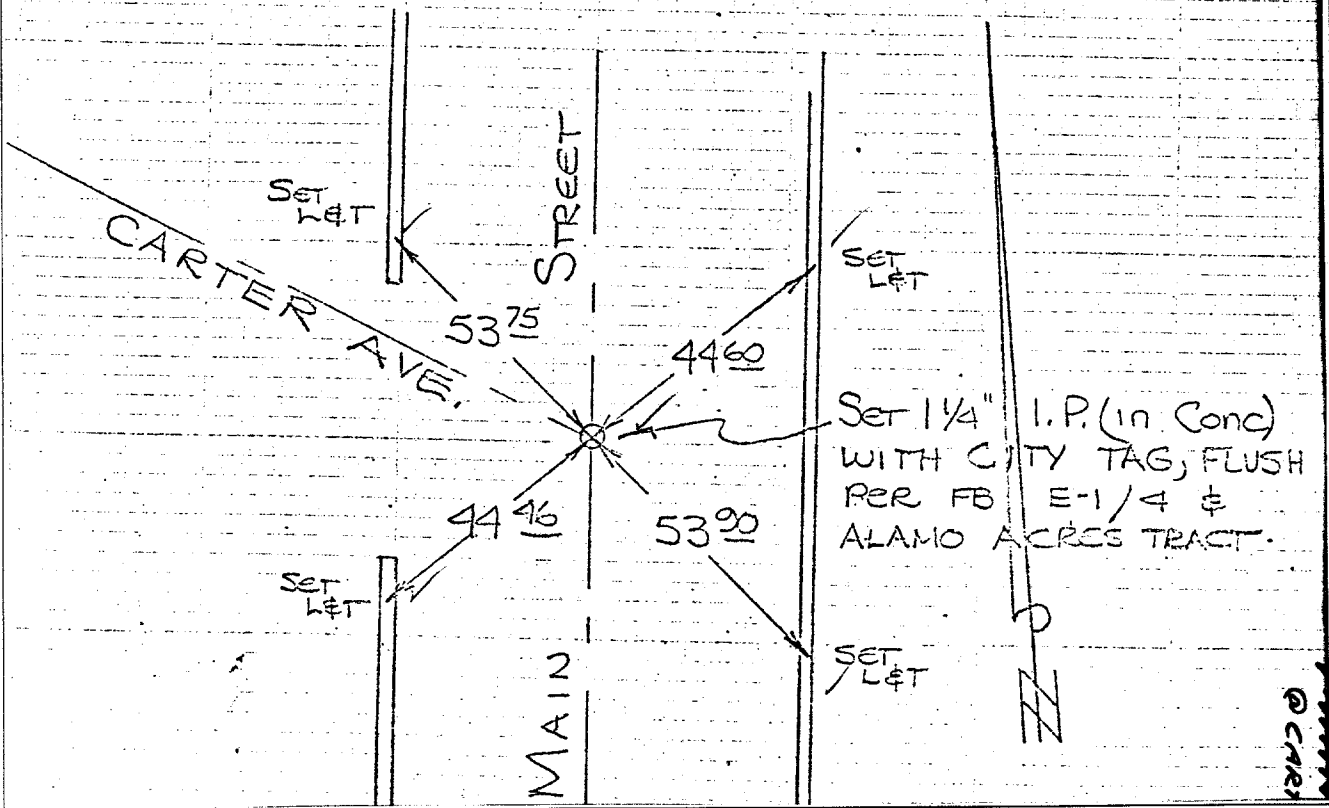
CREW
 HUTCHINSON
 THORP

DATE
 DEC. 5, 1968

Street: CARTER AVE
8500. TIF

X-Street: MAIN ST
 OFFICIAL USE ONLY

CRFB 857/41 *old 3/2 W.*



- ✕ FD. Ramset Nail on T/C
- FD. LD. & TK. on T/C
- FD. "C" Nail on T/C
- Set LD. & TK. on T/C

Scale:
 Date:
 Drawn by:
 W.O.:
 F.B.:

OFFICIAL TIE PLAT
CITY OF RIVERSIDE

These ties are for the purpose of perpetuating the found monumentation. No claim is made as to the relationship of the points or lines shown hereon to true boundary locations.

Sheet 1 of 1
 File No.: