

STREET **BRISBANE DRIVE** X-STREET **WLY OF BOTANY BAY RD.**

OFFICE USE ONLY

SCALE: N.T.S.

DATE: 7-10-00

DR. BY: C.E.G.

W.O.: 1003-001

--- OFFICIAL TIE PLAT ---

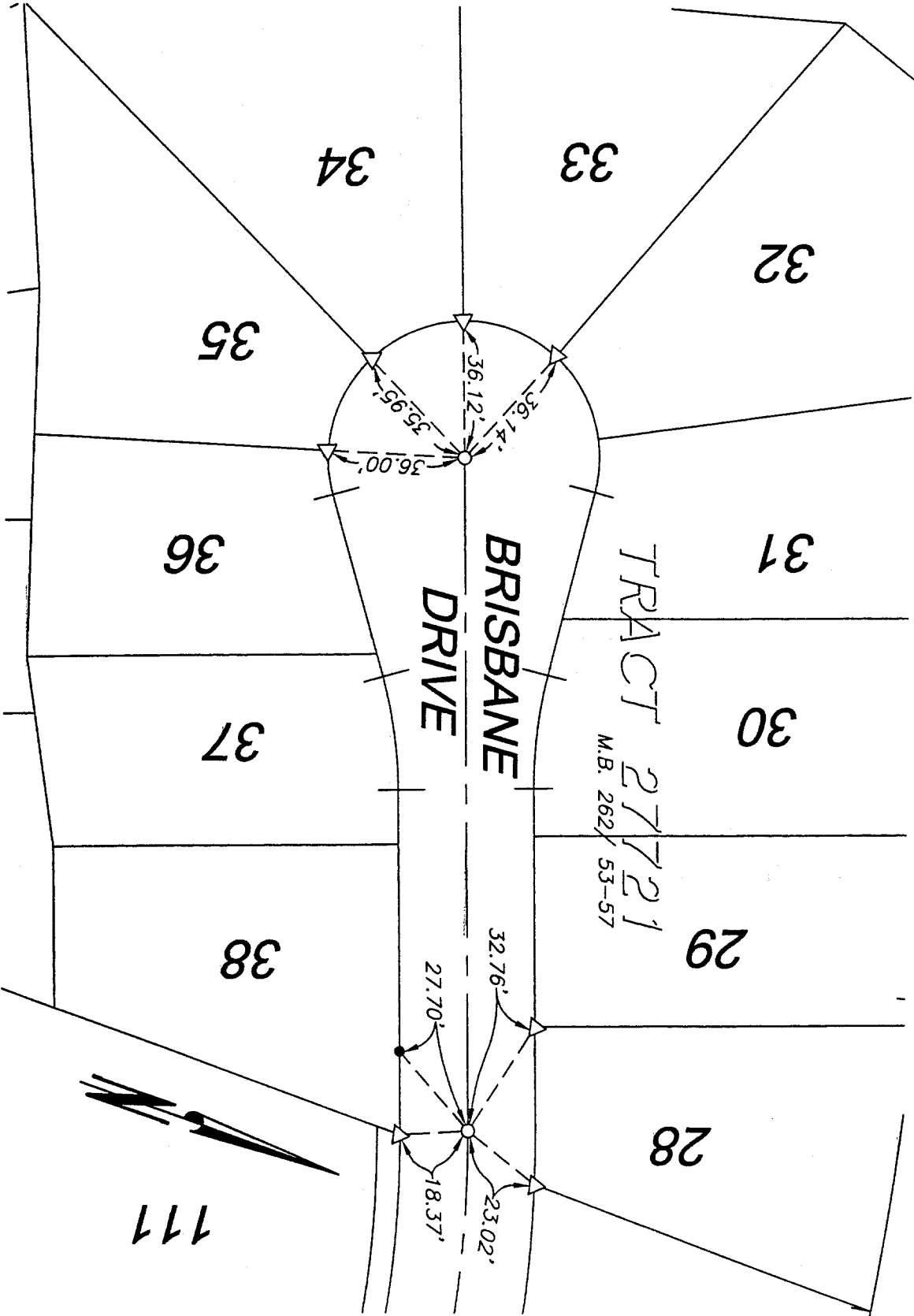
PREPARED BY: **C.E.G.**
 City Engineering Group, Inc.
 CIVIL ENGINEERING PLANNING SURVEYING
 2020 IOWA Avenue, Suite 102, Riverside, CA 92507
 P.O. Box 52050, Riverside, CA 92517 (909) 683-5234 FAX (909) 683-5301

OF 9 SHEETS

4

SHEET

- LEGEND
- Set Rammet Nail On T.C.
 - △--Set Nail and R.C.E. 17550 Tag in top of concrete curb at the prolongation of side lot lines.
 - Set 1/2" Spike w/washer stamped R.C.E. 17550, Flush.



File 498