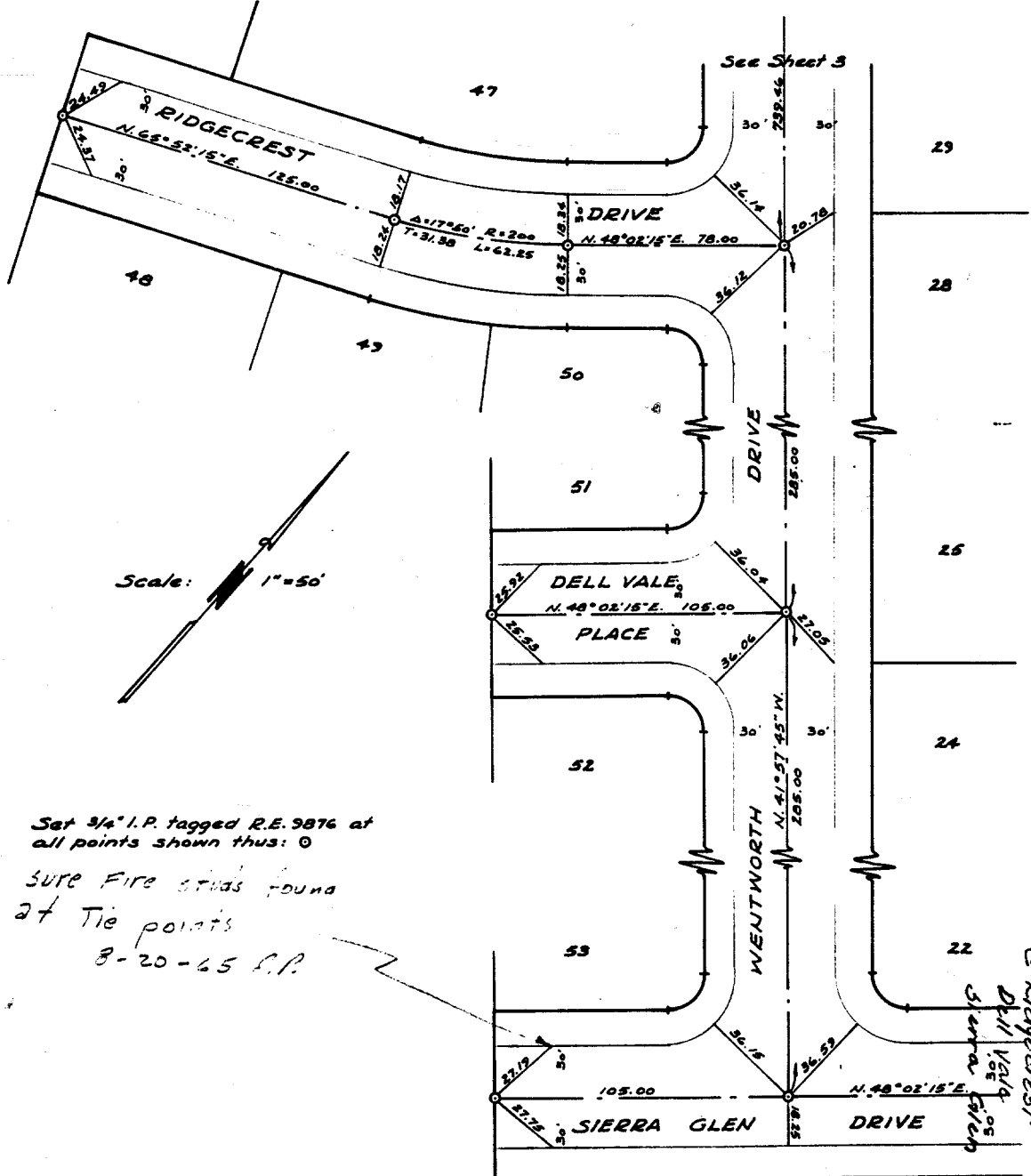


Being a subdivision of a portion of Sec. 9, T.3 S., R.6 W., of Rancho La Sierra per Map Book 6, Page 70, Riverside County Records.



Scale: 1" = 50'

Set 3/4" I.P. tagged R.E. 9876 at all points shown thus:
 Sure Fire studs found at Tie points
 8-20-65 L.P.

ALBERT A. WEBB ASSOCIATES

F.B. 542
 N.O. 63-183

Drawn by: EJD
 Date: 13 May 65

Street: WENTWORTH DRIVE
 8556 TIE
 X-Street: DELL VALE
 OFFICIAL USE ONLY

- ✕ FD. Ramset Nail on T/C
- FD. LD. & TK. on T/C
- FD. "C" Nail on T/C
- Set LD. & TK. on T/C

Scale:
 Date:
 Drawn by:
 W.O.: 63-183
 F.B.: 542

OFFICIAL TIE PLAT
 CITY OF RIVERSIDE

These ties are for the purpose of perpetuating the found monumentation. No claim is made as to the relationship of the points or lines shown hereon to true boundary locations.

TRACT 2740
 Sheet 1 of 1
 File No.: