

SWING TIES

896. TIF

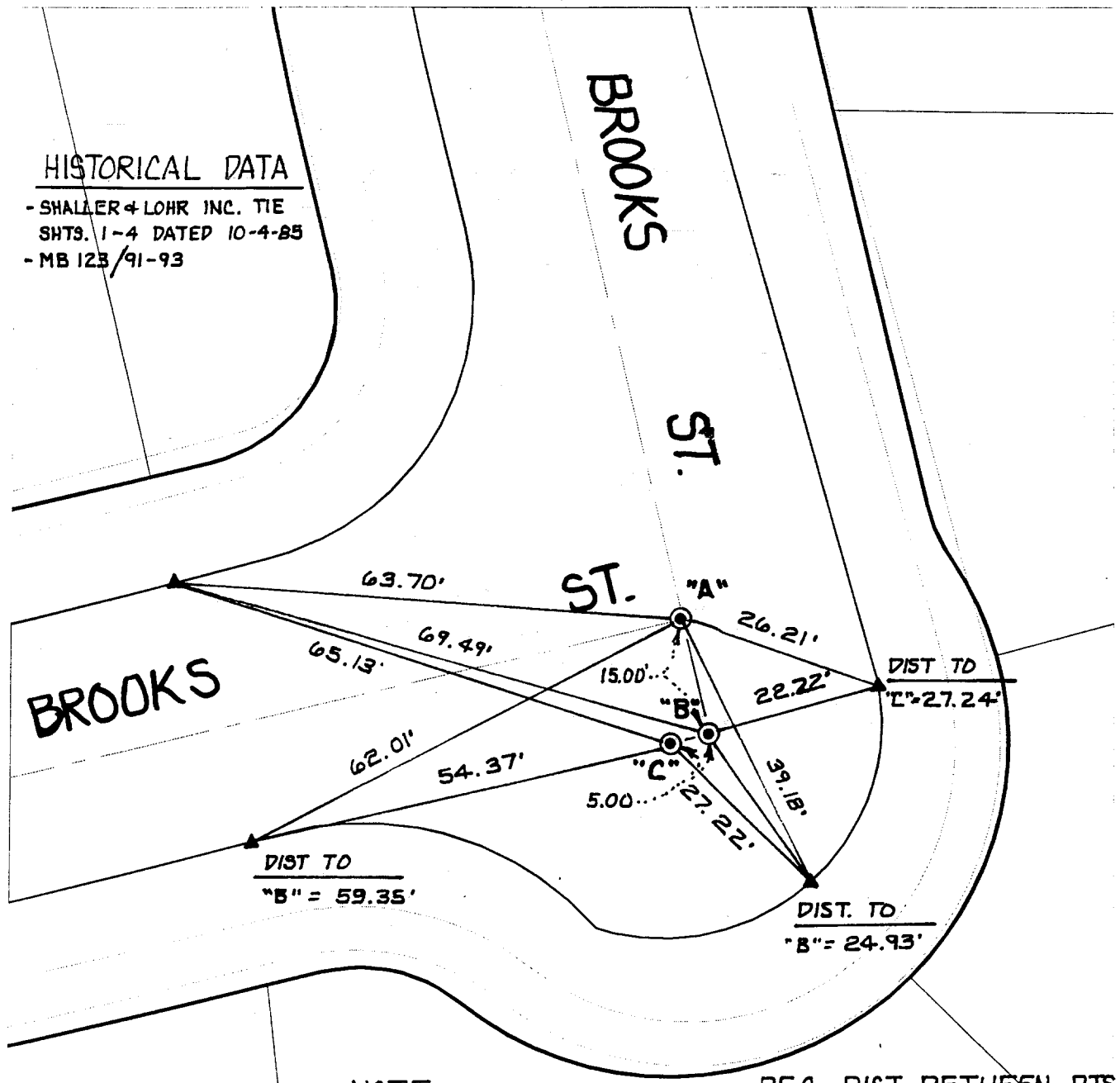
Street: ~~896. TIF~~

BROOKS ST.

X-Street NUCKLE ELY OF BOXWOOD
OFFICIAL USE ONLY

HISTORICAL DATA

- SHALLER & LOHR INC. TIE
- SHTS. 1-4 DATED 10-4-85
- MB 123/91-93



NOTE:

- ⊙ FD 3/4" I.P. W/RCE
9455 TAG FLUSH
- ▲ FD NAIL & RCE 20508
TAG ON TOP OF CURB
- ⊙ RESET P.K. & CITY
ENGR. TAG

REC. DIST. BETWEEN PTS.

- 'A' to 'B' 15.00' PER. MB 123/91-93
- 'B' to 'C' 5.00' PER. MB 123/91-93

- ✕ FD. Ramset Nail on T/C
- FD. LD. & TK. on T/C
- FD. "C" Nail on T/C
- Set LD. & TK. on T/C

Scale: 1" = 20'
 Date: 11/29/99
 Drawn by: survey
 W.O.:
 F.B.:

OFFICIAL TIE PLAT CITY OF RIVERSIDE

These ties are for the purpose of perpetuating the found monumentation. No claim is made as to the relationship of the points or lines shown hereon to true boundary locations.



Sheet 1 of 1
 File No.: