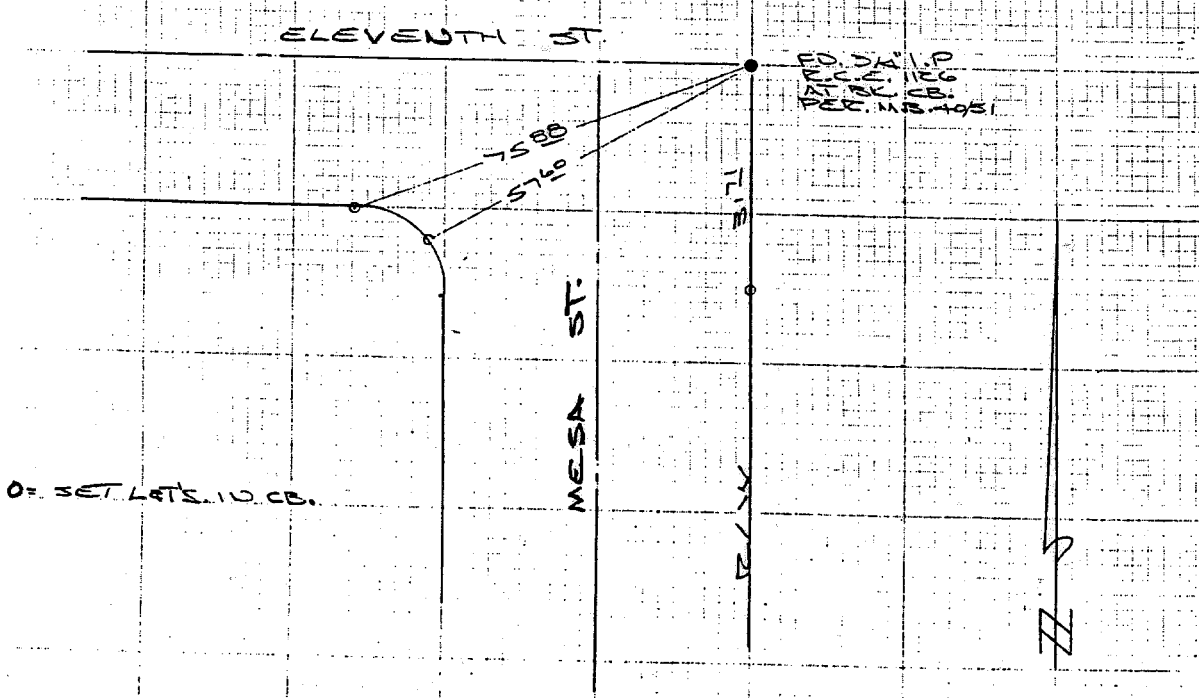


ELEVANTH ST.		ATELY R/W MESA ST.	
HISTORICAL DATA	SWING TIES	CREW	
M.B. 40/51		GARCIA-FAUO-KLUZ	
		LL13/EGA OCT. 12, 1984	



- ✕ FD. Ramset Nail on T/C
- FD. LD. & TK. on T/C
- FD. "C" Nail on T/C
- Set LD. & TK. on T/C

Scale:
 Date:
 Drawn by:
 W.O.:
 F.B.:

OFFICIAL TIE PLAT
 CITY OF RIVERSIDE

These ties are for the purpose of perpetuating the found monumentation. No claim is made as to the relationship of the points or lines shown hereon to true boundary locations.

Sheet 1 of 1
 File No.:

Street: MESA ST.
925A TIE
 X-Street: 11th St
 OFFICIAL USE ONLY