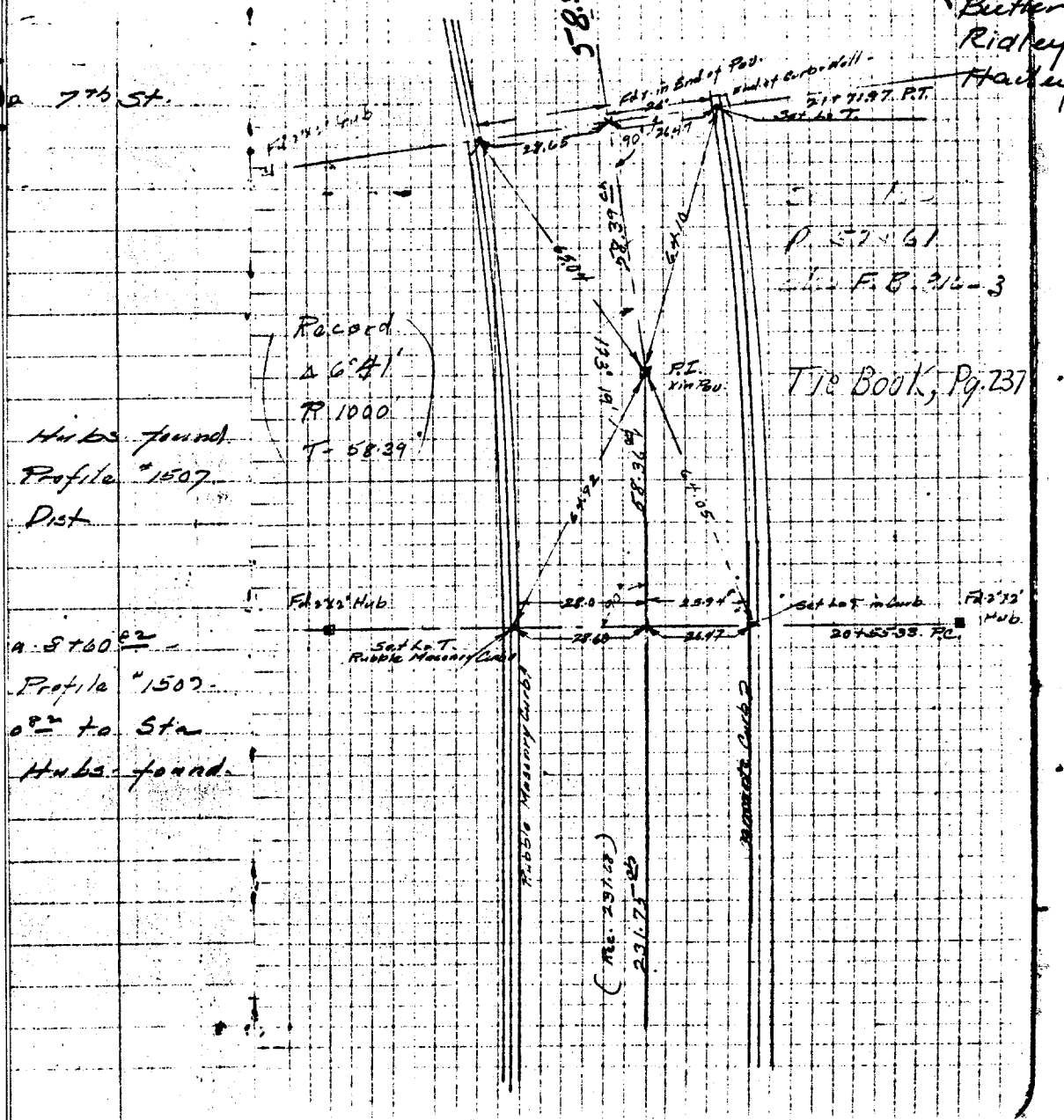


939. TIF

BUENA VISTA
C.R.F.B. 297-44

Butler
Ridley
Haley



Record
Δ 6' 8 1/2"
R. 1000
T. 58.39'

Hubs found
Profile #1507
Dist

P. 57-61
C.R.F.B. 314-3
Tie Book, Pg. 237

FD's Hub.
Set L.C.T. Rubble Masonry Curb
Set L.C.T. in Curb
FD's Hub.
207455-58 P.C.

28.0
25.94
28.60
24.77

231.75-25
231.75-25

- ✗ FD. Ramset Nail on T/C
- FD. LD. & TK. on T/C
- FD. "C" Nail on T/C
- Set LD. & TK. on T/C

Scale:
Date:
Drawn by:
W.O.:
F.B.:

OFFICIAL TIE PLAT

CITY OF RIVERSIDE

These ties are for the purpose of perpetuating the found monumentation. No claim is made as to the relationship of the points or lines shown hereon to true boundary locations.

Sheet 1 of 1
File No.:

Street: BUENA VISTA
X-Street: OFFICIAL USE ONLY