

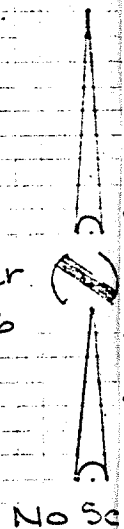
ETIES RIVERSIDE COUNTY TRACT No 3405

Voorheis
Trindle
Nelson Inc.

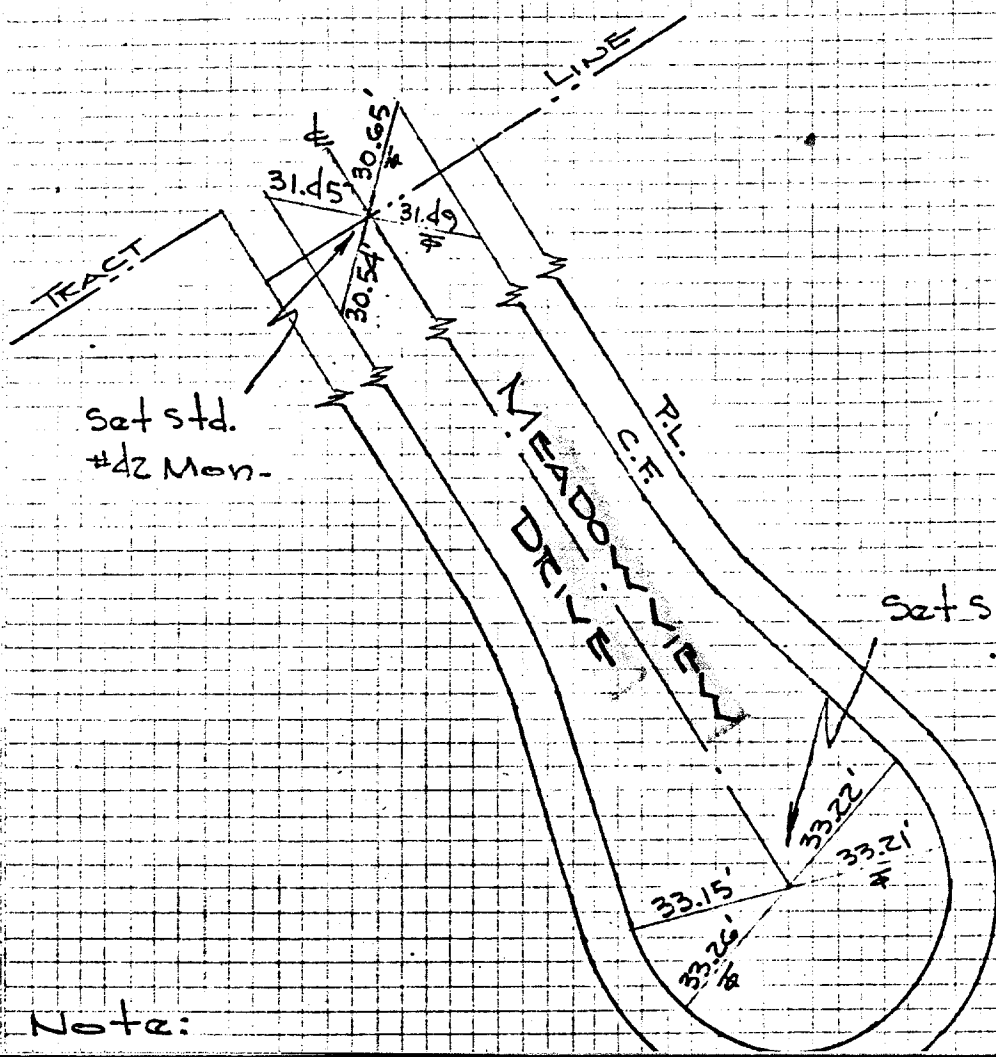
C. Weaver
5-6-66

Street: **MEADOWVIEW DR.**
9453 TIE
X-Street:

OFFICIAL USE ONLY



NOTED IN THE BOOK



Note:

- ✕ FD. Ramset Nail on T/C
- FD. LD. & TK. on T/C
- FD. "C" Nail on T/C
- Set LD. & TK. on T/C

Scale:
Date:
Drawn by:
W.O.:
F.B.:

OFFICIAL TIE PLAT CITY OF RIVERSIDE

These ties are for the purpose of perpetuating the found monumentation. No claim is made as to the relationship of the points or lines shown hereon to true boundary locations.

Sheet 1 of 1
File No.: