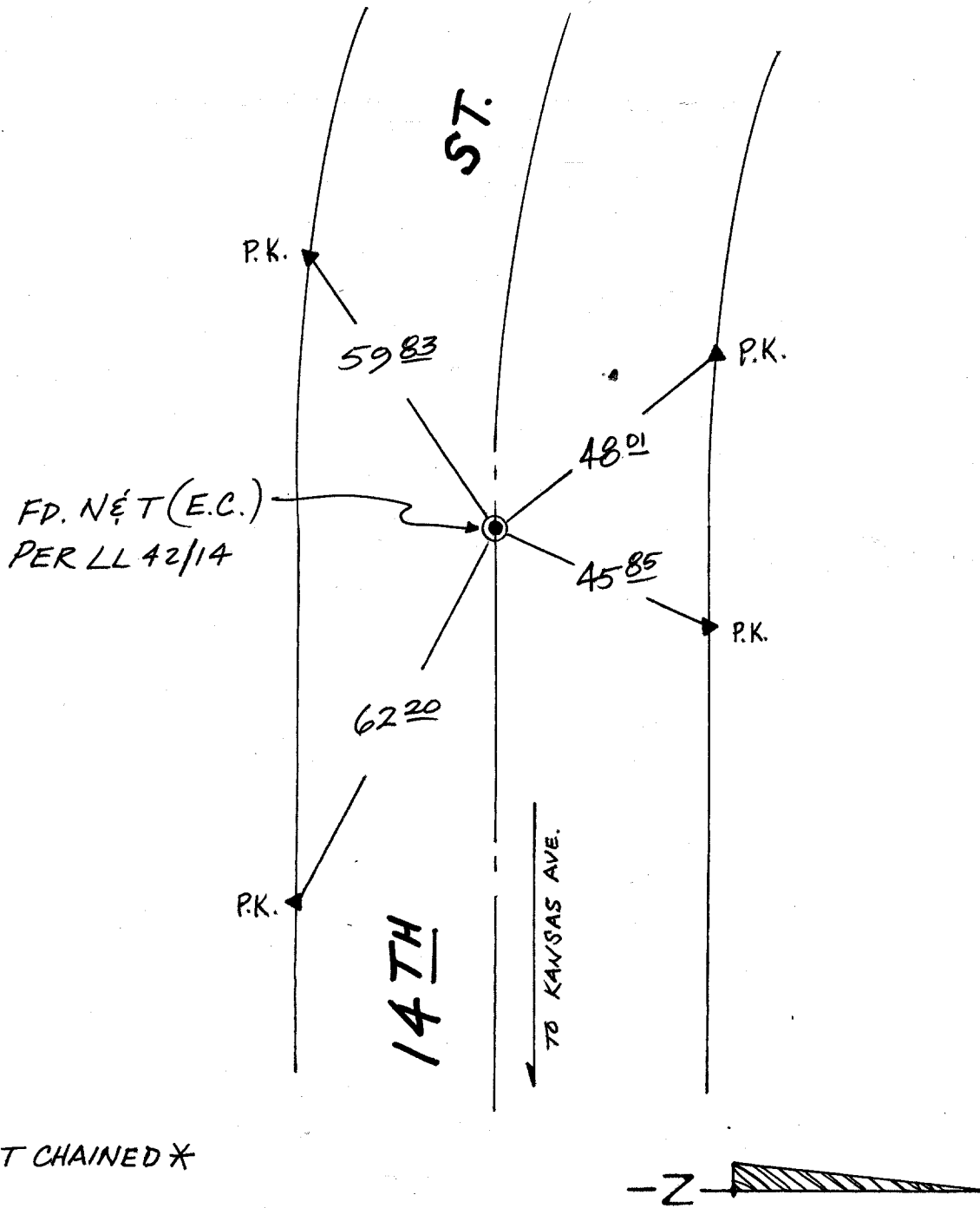


SWING TIES



FLAT CHAINED

Street: 14TH ST. (E.C.)
9530 TIF
 X-Street: W.I.Y OF KANSAS AVE.
 OFFICIAL USE ONLY

- FD. Ramset Nail on T/C
- FD. "C" Nail on T/C
- Set LD. & TK. on T/C
- FD. LD. & TK. on T/C

Scale: _____
 Date: _____
 Drawn by: _____
 W.O.: _____
 F.B.: _____

OFFICIAL TIE PLAT CITY OF RIVERSIDE

These ties are for the purpose of perpetuating the found monumentation. No claim is made as to the relationship of the points or lines shown hereon to true boundary locations.

Sheet 1 of 1
File No.: