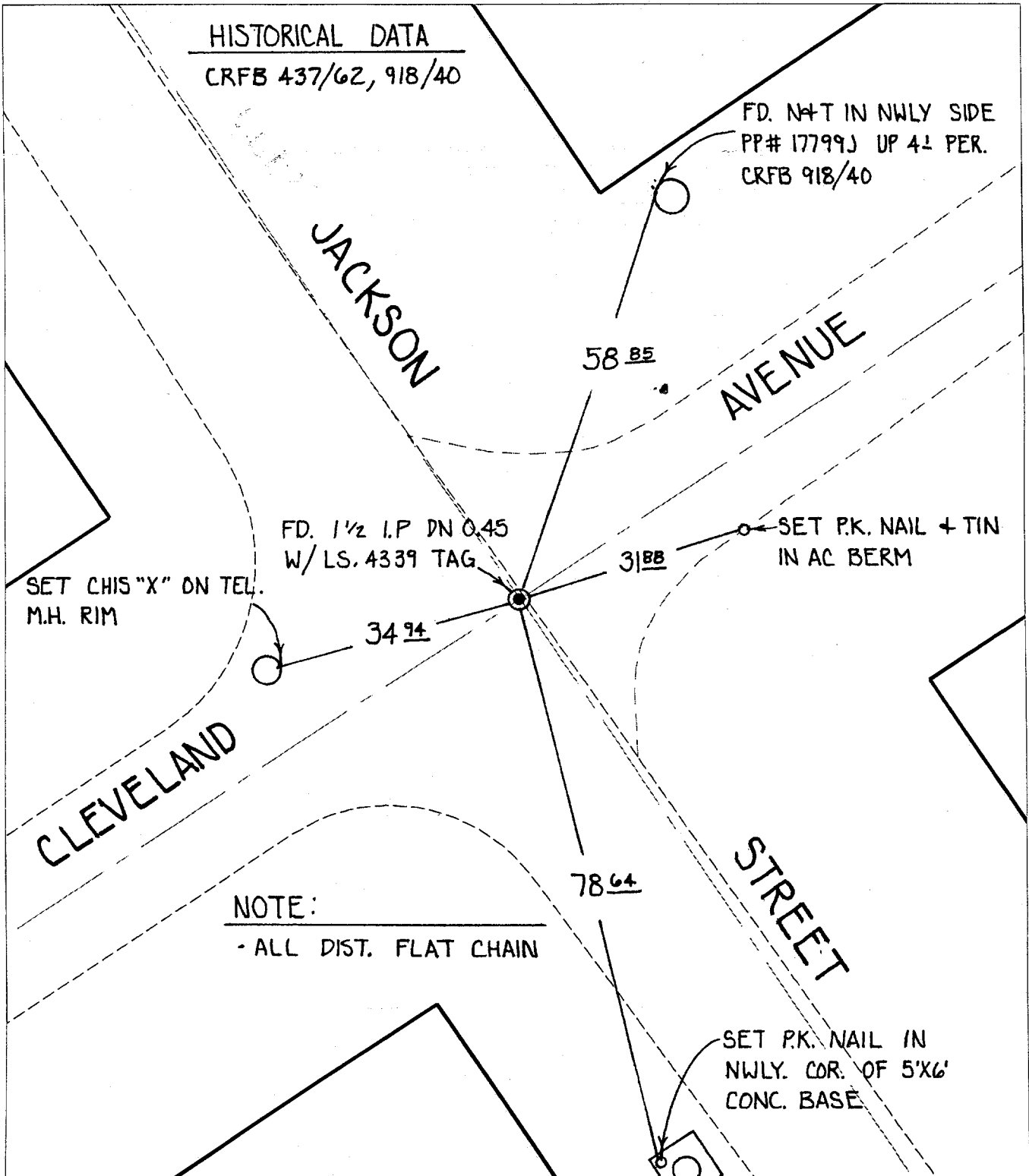


# SWING TIES



Street: **9774** JACKSON STREET  
X-Street: CLEVELAND AVENUE  
OFFICIAL USE ONLY

- ✕ FD. Ramset Nail on T/C    ● FD. LD. & TK. on T/C
- FD. "C" Nail on T/C      ○ Set LD. & TK. on T/C

*P.K. and City Engineer tag to be set @ surface after street construction is complete. (If possible)*

Scale: 1" = 20'  
Date: 12/06/00  
Drawn by: SURVEY  
W.O.:  
F.B.:

## OFFICIAL TIE PLAT CITY OF RIVERSIDE

*These ties are for the purpose of perpetuating the found monumentation. No claim is made as to the relationship of the points or lines shown hereon to true boundary locations.*



Sheet 1 of 1  
File No.: