

SWING TIES

Street:
9928

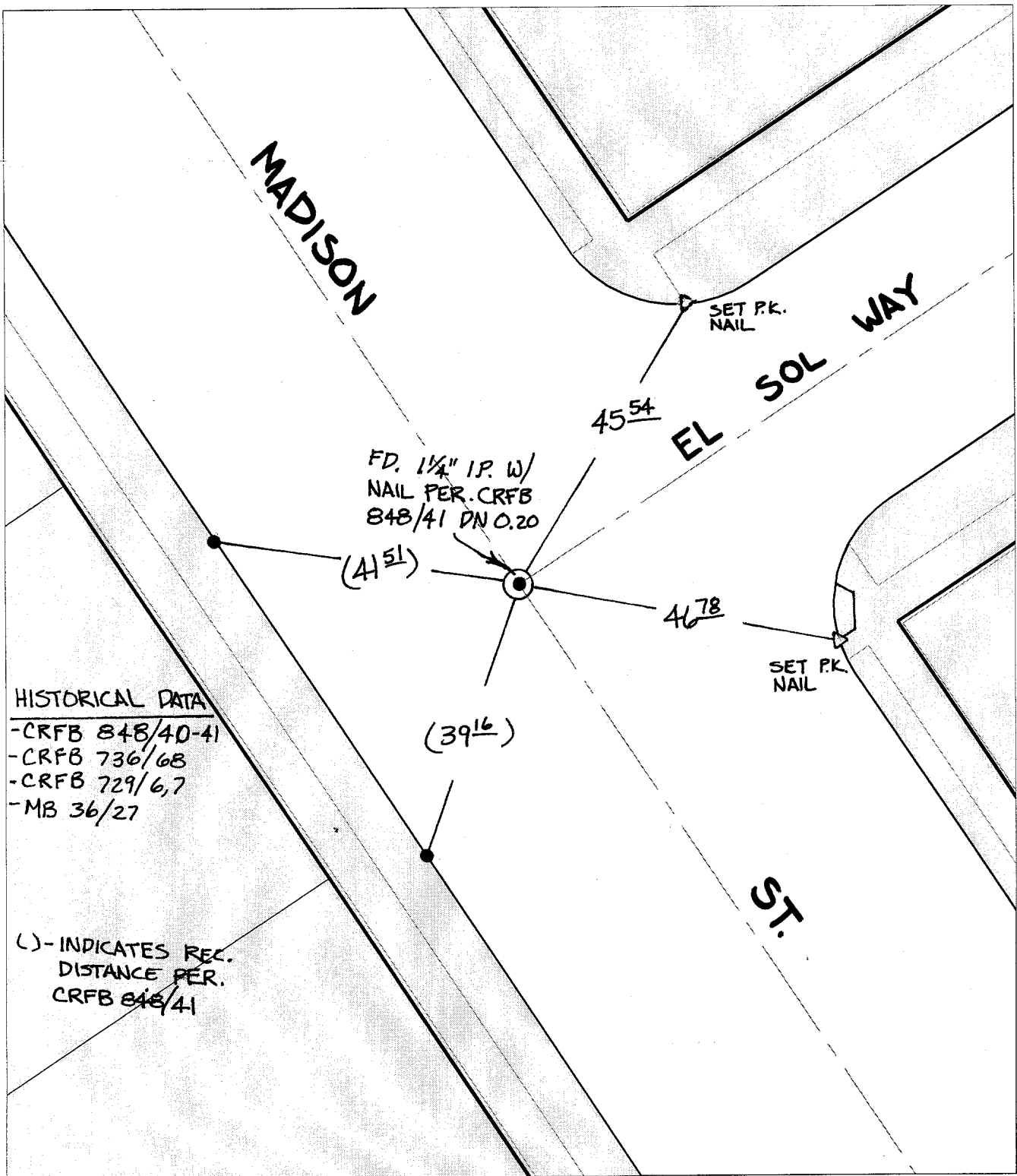
TIF

MADISON ST

OFFICIAL USE ONLY

X-Street:

EL SOL WAY



HISTORICAL DATA

- CRFB 848/40-41
- CRFB 736/68
- CRFB 729/6,7
- MB 36/27

() - INDICATES REC. DISTANCE PER. CRFB 848/41

- ✕ FD. Ramset Nail on T/C
- FD. LD. & TK. on T/C
- FD. "C" Nail on T/C
- Set LD. & TK. on T/C

Scale: 1" = 20'
 Date: 05/25/00
 Drawn by: scurtis
 W.O.:
 F.B.:

OFFICIAL TIE PLAT CITY OF RIVERSIDE

These ties are for the purpose of perpetuating the found monumentation. No claim is made as to the relationship of the points or lines shown hereon to true boundary locations.



Sheet 1 of 1
 File No.: