

Street:

ORLY PLACE

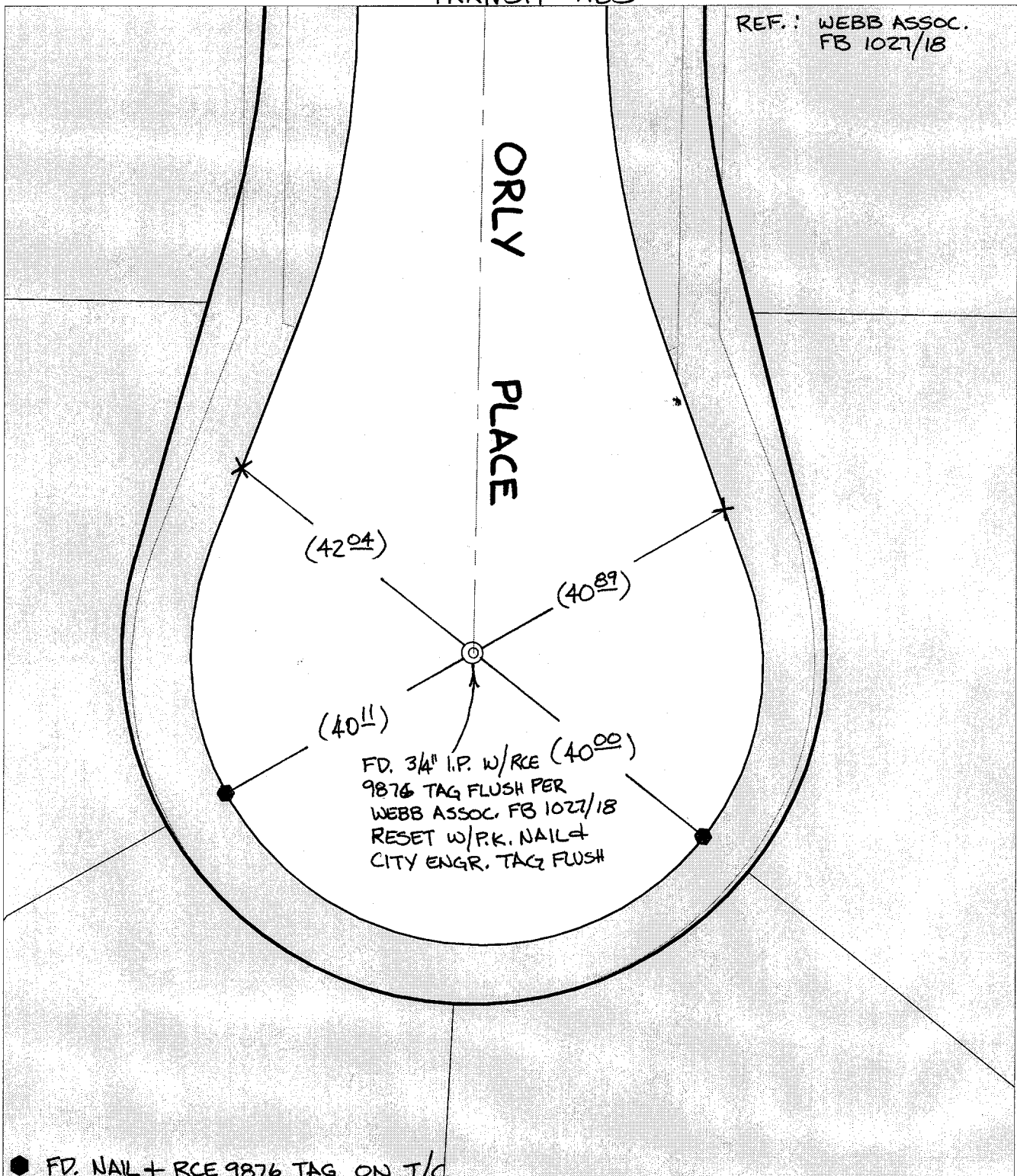
X-Street:  
OFFICIAL USE ONLY

CUL-DE-SAC

TRANSIT TIES

REF.: WEBB ASSOC.  
FB 1027/18

ORLY PLACE



● FD. NAIL + RCE 9876 TAG ON T/C

- × FD. Ramset Nail on T/C
- FD. LD. & TK. on T/C
- FD. "C" Nail on T/C
- Set LD. & TK. on T/C

P.K. and City Engineer tag to be set @ surface after street construction is complete. (If possible)

Scale: 1" = 20'

Date: 03/06/03

Drawn by: SURVEY

F.B.:

TR-Sec: T2SR5W-25

## OFFICIAL TIE PLAT

### CITY OF RIVERSIDE

*These ties are for the purpose of perpetuating the found monumentation. No claim is made as to the relationship of the points or lines shown hereon to true boundary locations.*



Sheet 1 of 1

Cadme MB: 40-5